

WRAPSHIELD SA[®]
 SELF-ADHERED

A Vapor permeable, weather-resistive, air barrier self-adhered membrane with VaproLiqui-Flash vapor permeable, liquid applied flashing system.

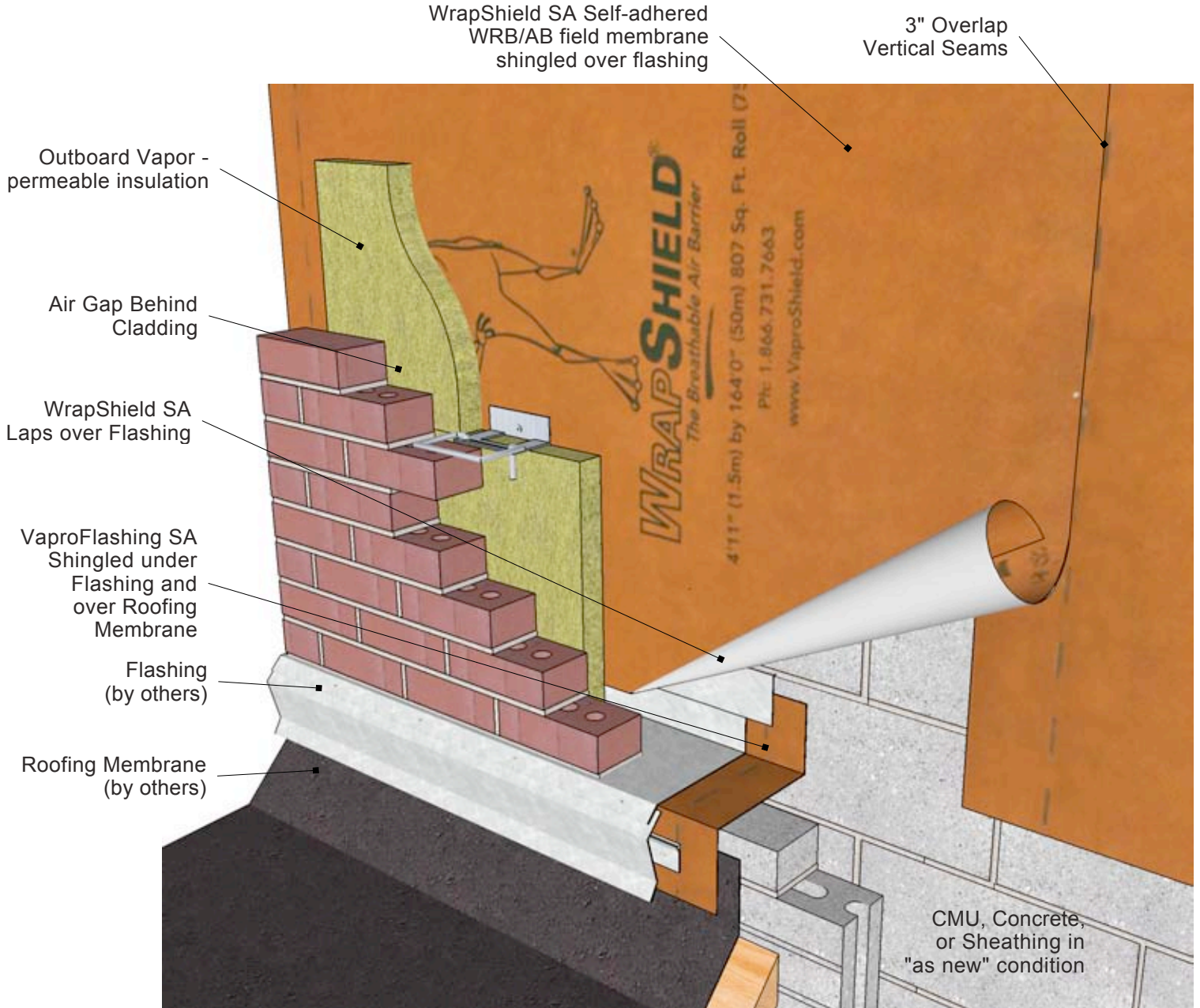
DESCRIPTION:

WrapShield SA with VaproLiqui-Flash and VaproFlashing SA (Self-Adhered) creates a complete air barrier membrane over gypsum or plywood sheathing, concrete, and CMU blocks.

DRAWN BY: AFG DATE: 23.09.2012

Always check www.vaproshield.com for the latest details and installation instructions

WrapShield SA Low Roof to Wall Detail



WRAPSHIELD SA[®]
SELF-ADHERED

A Vapor permeable, weather-resistive, air barrier self-adhered membrane with VaproLiqui-Flash vapor permeable, liquid applied flashing system.

DESCRIPTION:

WrapShield SA with VaproLiqui-Flash and VaproFlashing SA (Self-Adhered) creates a complete air barrier membrane over gypsum or plywood sheathing, concrete, and CMU blocks.

DRAWN BY: AFG DATE: 23.09.2012

Always check www.vaproshield.com for the latest details and installation instructions

For Larger Penetrations, use VaproLiqui-Flash tooled at least 2" onto the face and 2" out along all sides of the penetration

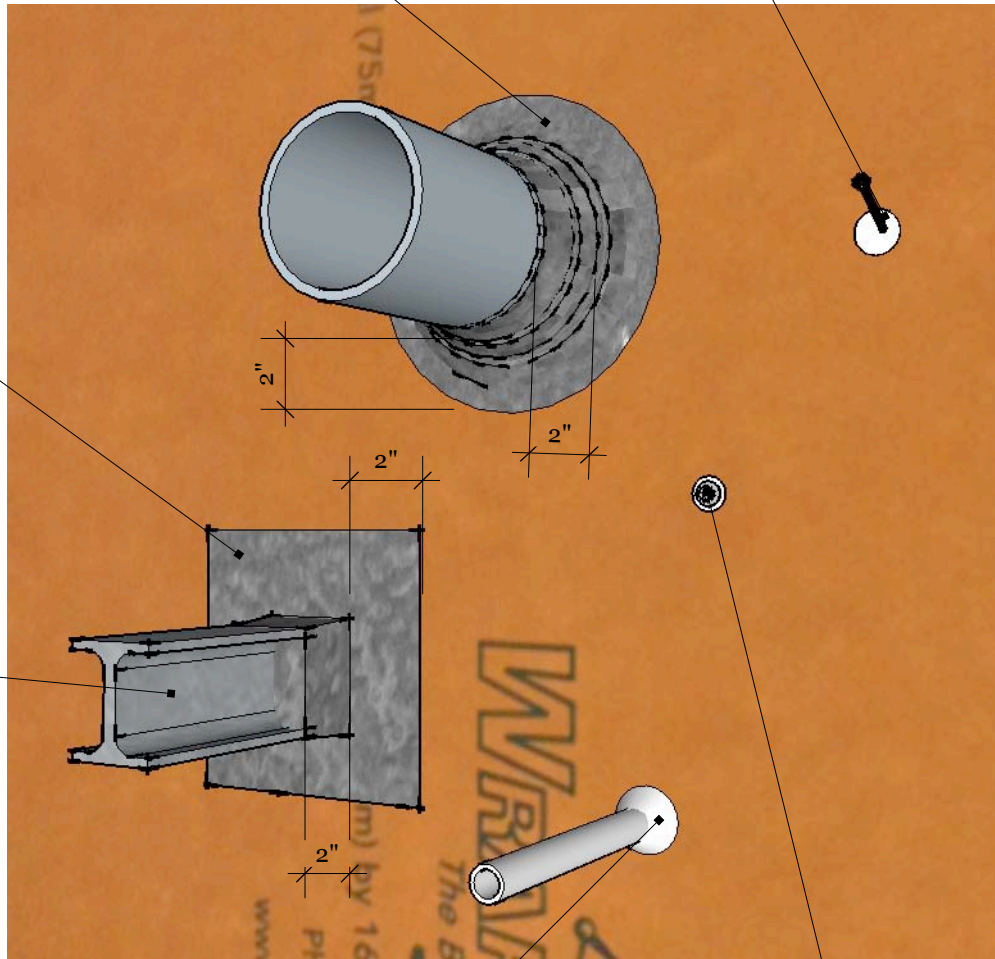
Apply sufficient Dow 758 Sealant to completely seal fastener penetrations

Apply VaproLiqui-Flash to complex penetrations [i.e. structural elements] tooled evenly at least 2" onto the face and at least 2" out along all sides of the penetration

OK to apply VaproLiqui-Flash to damp substrate

Apply and lightly tool Dow 758 Sealant around smaller penetrations up to 1" in Diameter

Gasketed Fasteners Require no additional Sealing



WRAPSHIELD SA[®]
SELF-ADHERED

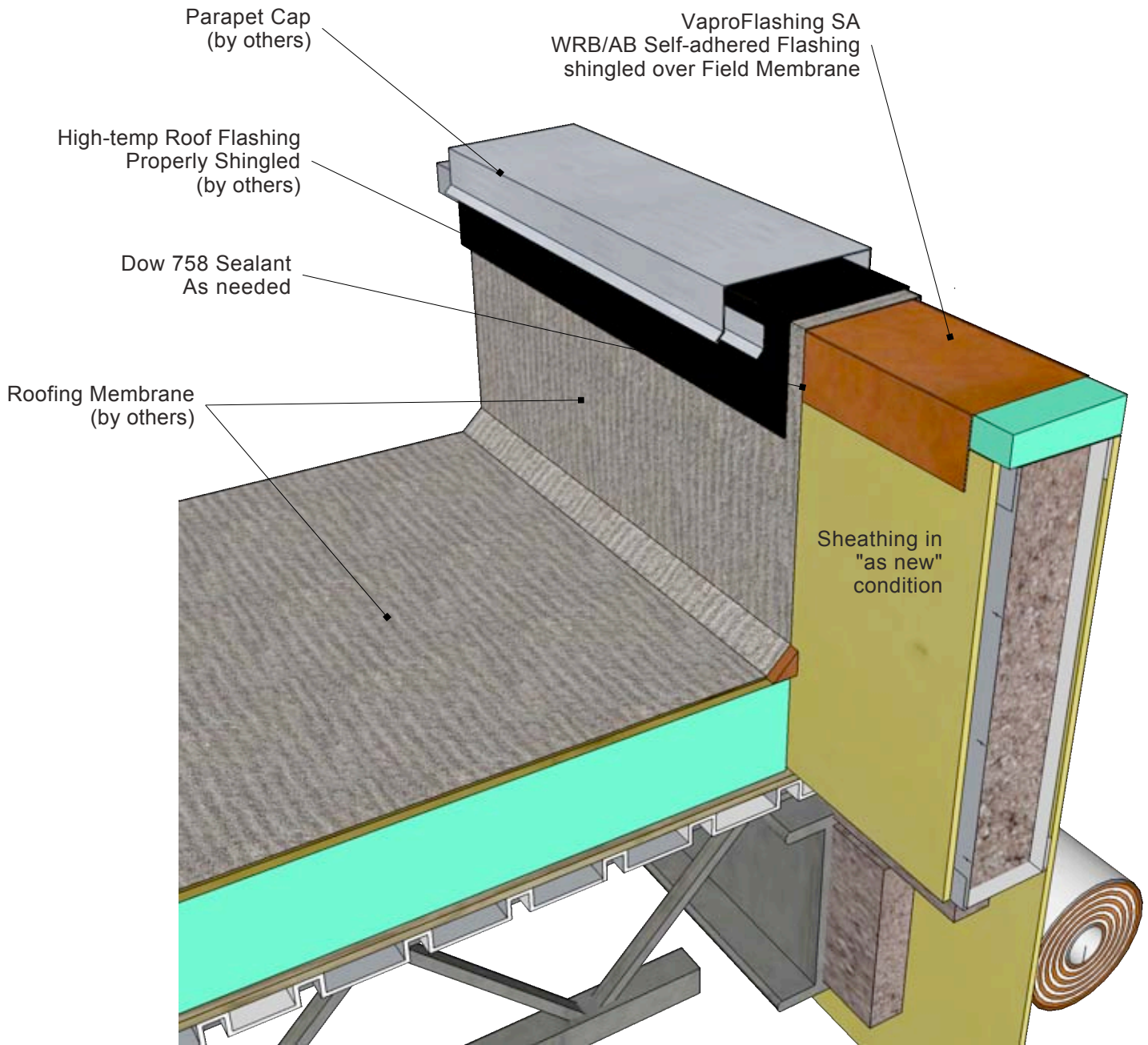
A Vapor permeable, weather-resistive, air barrier self-adhered membrane with VaproLiqui-Flash vapor permeable, liquid applied flashing system.

DESCRIPTION:

WrapShield SA with VaproLiqui-Flash and VaproFlashing SA (Self-Adhered) creates a complete air barrier membrane over gypsum or plywood sheathing, concrete, and CMU blocks.

DRAWN BY: AFG DATE: 23.09.2012

Always check www.vaproshield.com for the latest details and installation instructions



WRAPSHIELD SA[®]
SELF-ADHERED

A Vapor permeable, weather-resistive, air barrier self-adhered membrane with VaproLiqui-Flash vapor permeable, liquid applied flashing system.

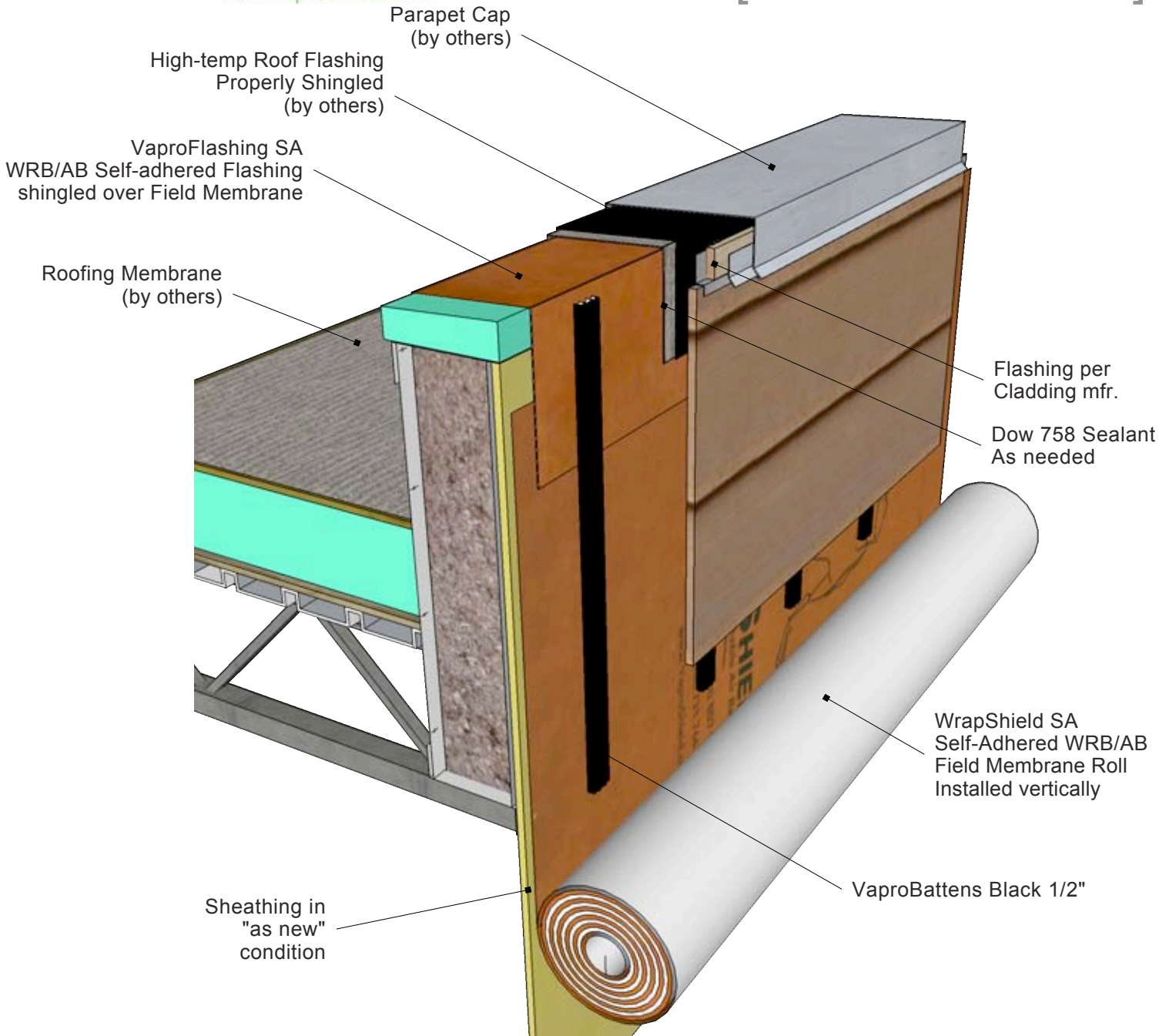
DESCRIPTION:

WrapShield SA with VaproLiqui-Flash and VaproFlashing SA (Self-Adhered) creates a complete air barrier membrane over gypsum or plywood sheathing, concrete, and CMU blocks.

DRAWN BY: AFG DATE: 23.09.2012

Always check www.vaproshield.com for the latest details and installation instructions

WrapShield SA Parapet Detail [Outside Isometric]



WRAPSHIELD SA[®]
 SELF-ADHERED

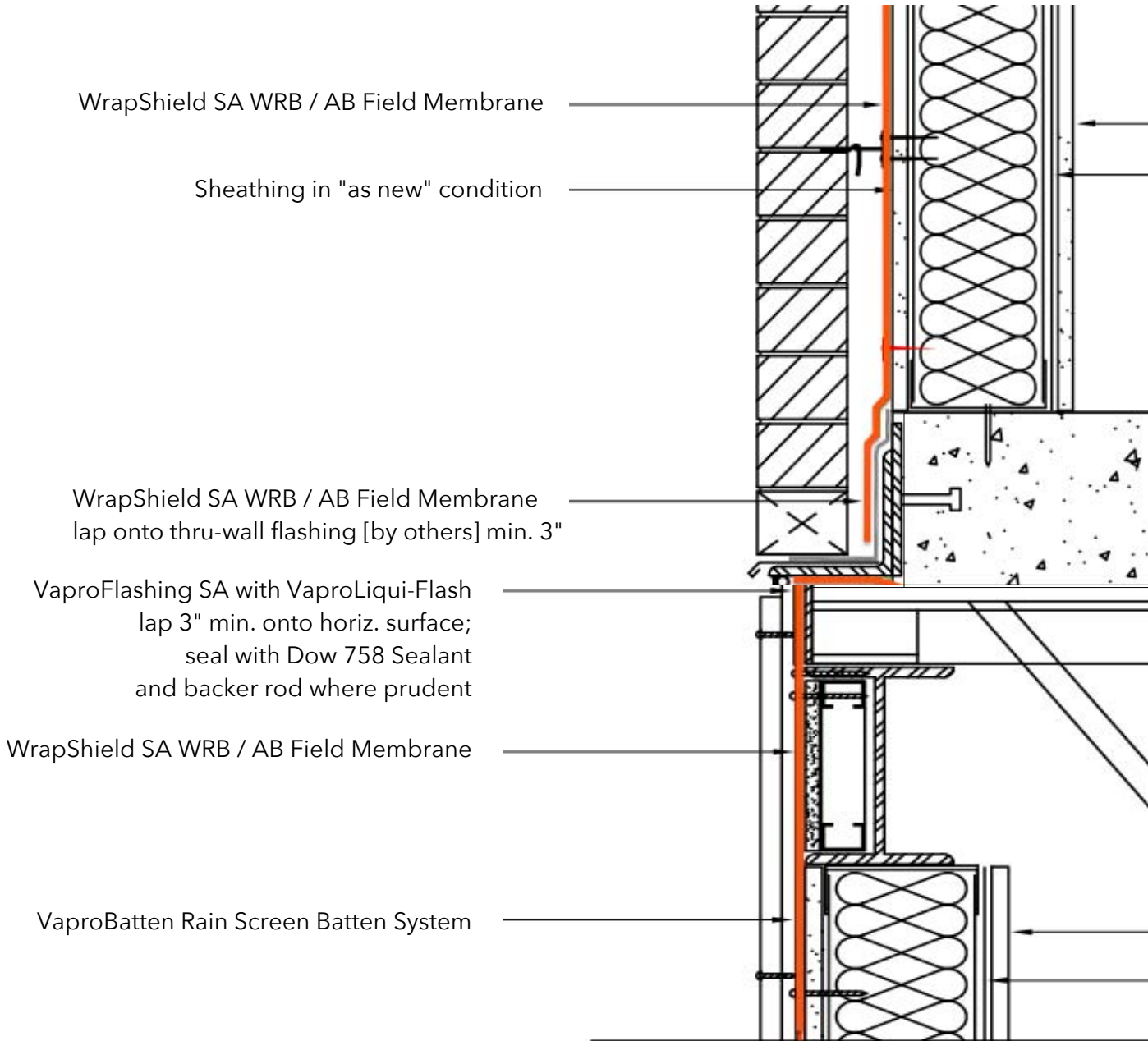
A Vapor permeable, weather-resistive, air barrier self-adhered membrane with VaproLiqui-Flash vapor permeable, liquid applied flashing system.

DESCRIPTION:

WrapShield SA with VaproLiqui-Flash and VaproFlashing SA (Self-Adhered) creates a complete air barrier membrane over gypsum or plywood sheathing, concrete, and CMU blocks.

DRAWN BY: AFG DATE: 23.09.2012

Always check www.vaproshield.com for the latest details and installation instructions



WRAPSHIELD SA[®]
SELF-ADHERED

A Vapor permeable, weather-resistive, air barrier self-adhered membrane with VaproLiqui-Flash vapor permeable, liquid applied flashing system.

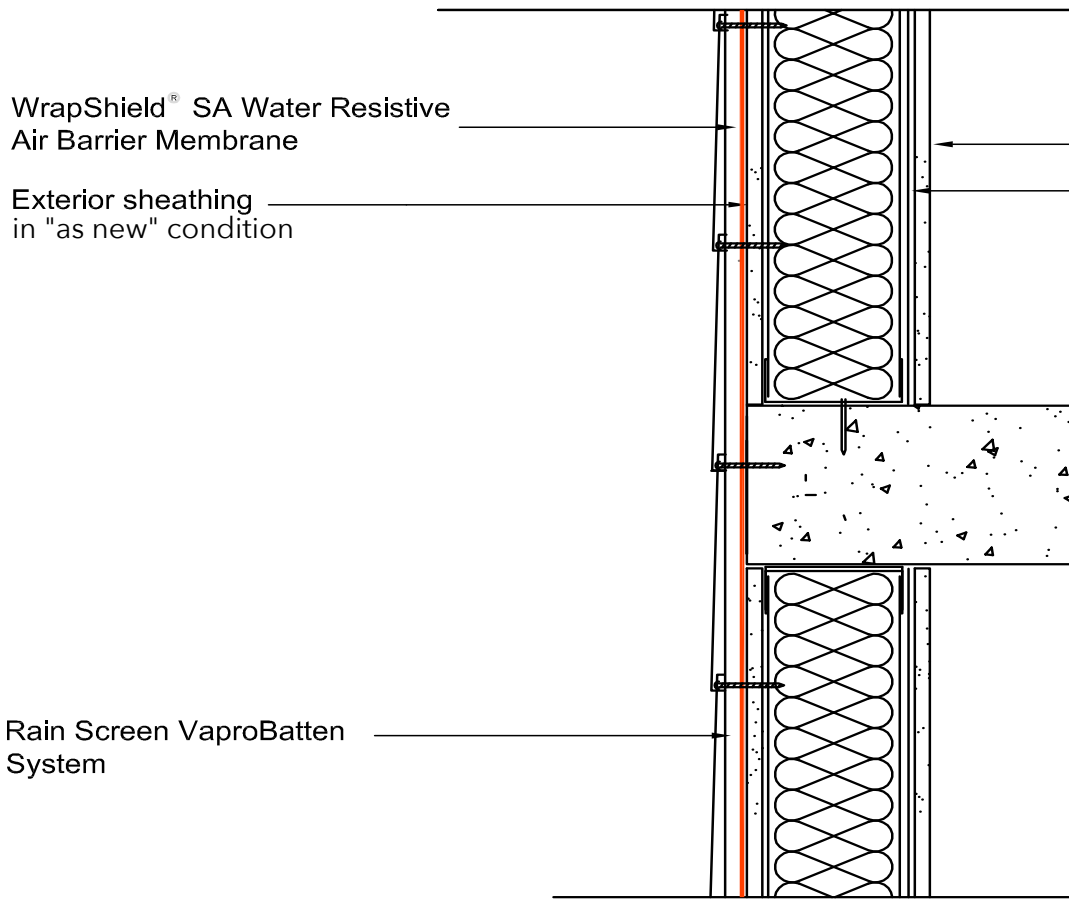
DESCRIPTION:

WrapShield SA with VaproLiqui-Flash and VaproFlashing SA (Self-Adhered) creates a complete air barrier membrane over gypsum or plywood sheathing, concrete, CMUs, etc..

DRAWN BY: AFG DATE: 10.10.2014

Always check www.vaproshield.com for the latest details and installation instructions

WrapShield SA Change in Substrate



WRAPSHIELD SA[®]
 SELF-ADHERED

A Vapor permeable, weather-resistive, air barrier self-adhered membrane with VaproLiqui-Flash vapor permeable, liquid applied flashing system.

DESCRIPTION:

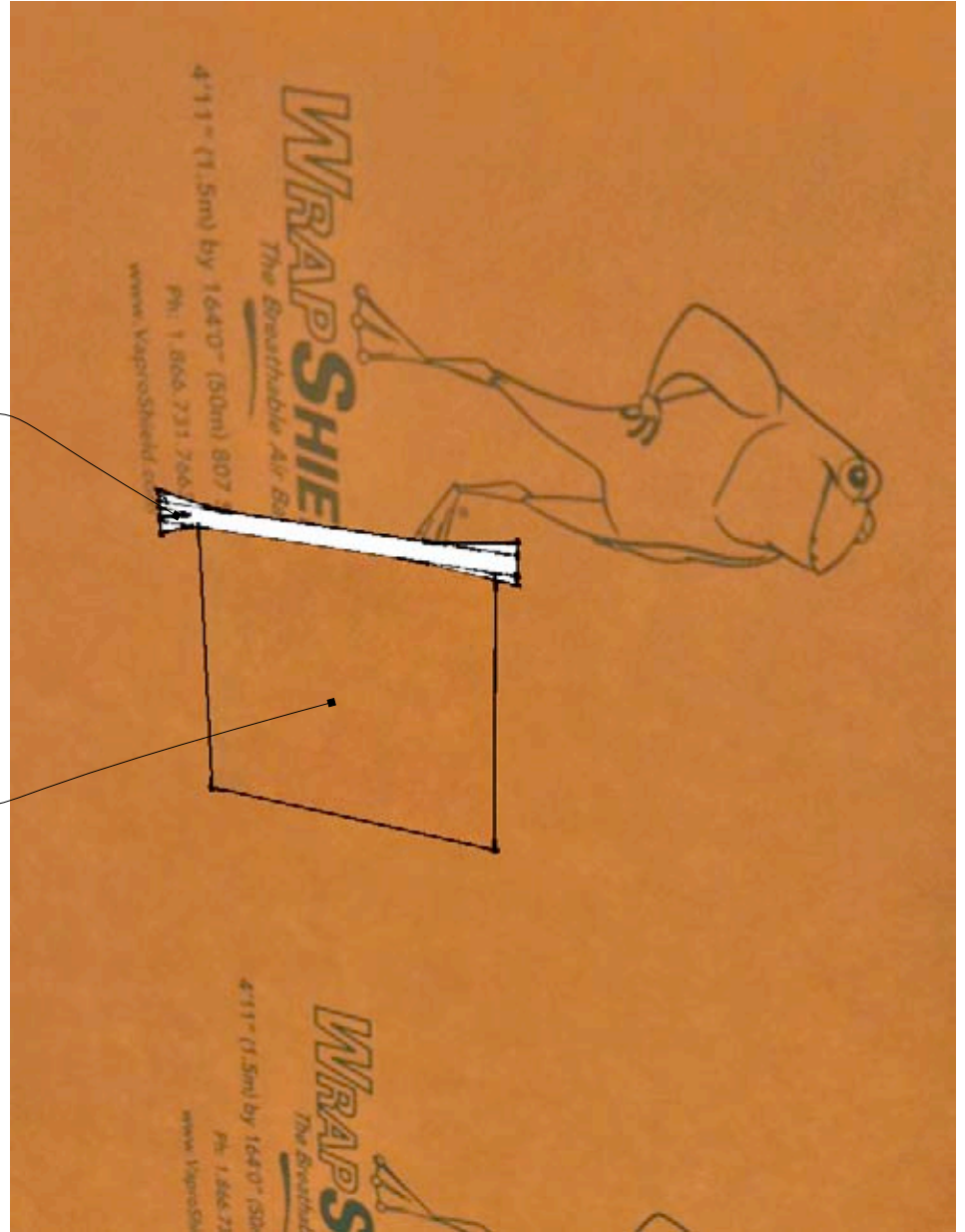
WrapShield SA with VaproLiqui-Flash and VaproFlashing SA (Self-Adhered) creates a complete air barrier membrane over gypsum or plywood sheathing, concrete, CMUs, etc..

DRAWN BY: AFG DATE: 10.10.2014

Always check www.vaproshield.com for the latest details and installation instructions

Dow 758 Sealant tooled
 @ top edge of reverse lap

VaproFlashing SA or WrapShield SA
 6" lap around perimeter of damage



WRAPSHIELD SA®
 SELF-ADHERED

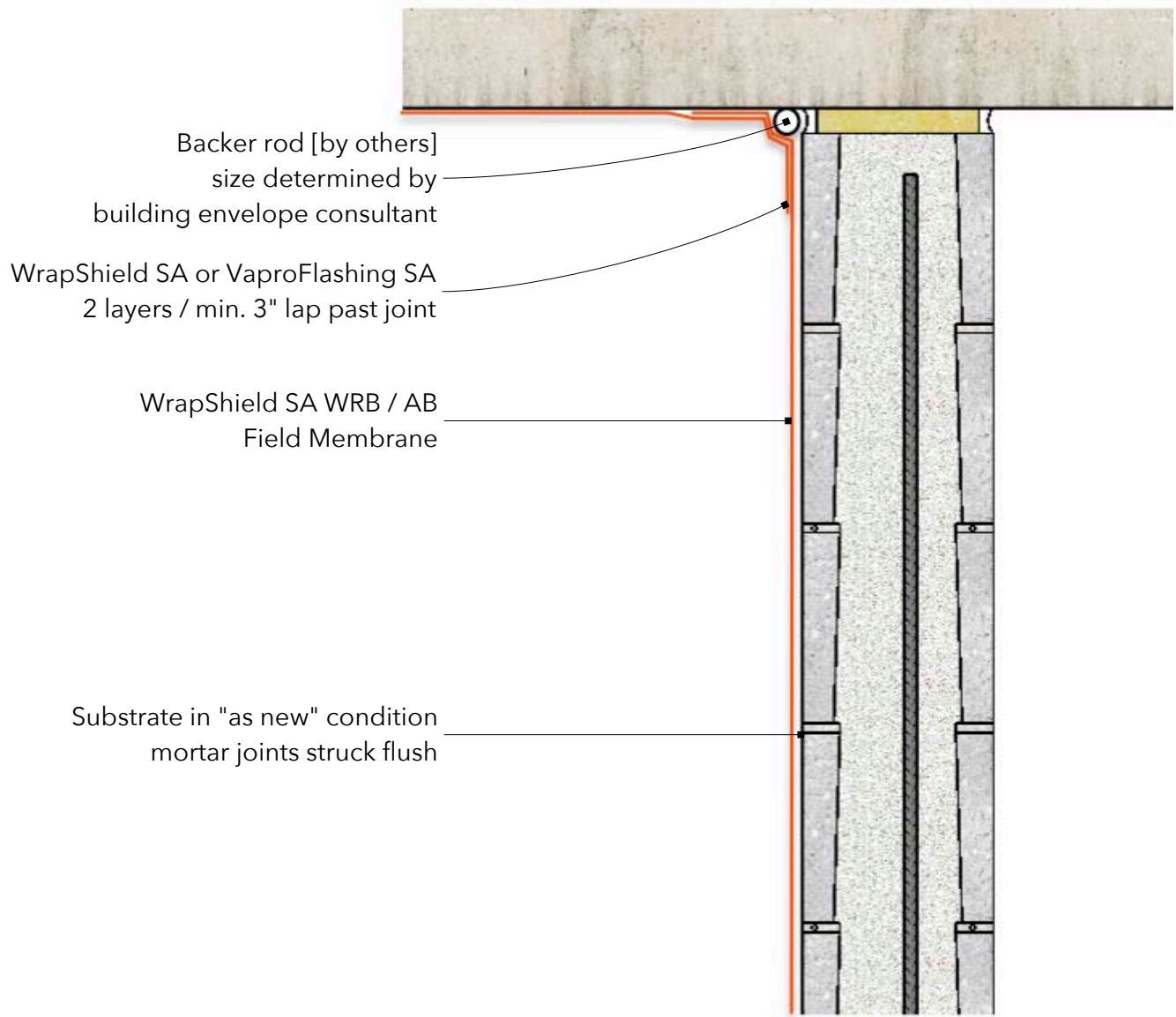
A Vapor permeable, weather-resistive, air barrier self-adhered membrane with VaproLiqui-Flash vapor permeable, liquid applied flashing system.

DESCRIPTION:

WrapShield SA with VaproLiqui-Flash and VaproFlashing SA (Self-Adhered) creates a complete air barrier membrane over gypsum or plywood sheathing, concrete, CMUs, etc..

DRAWN BY: AFG DATE: 10.10.2014

Always check www.vaproshield.com for the latest details and installation instructions



WRAPSHIELD SA[®]
 SELF-ADHERED

A Vapor permeable, weather-resistive, air barrier self-adhered membrane with VaproLiqui-Flash vapor permeable, liquid applied flashing system.

DESCRIPTION:

WrapShield SA with VaproLiqui-Flash and VaproFlashing SA (Self-Adhered) creates a complete air barrier membrane over gypsum or plywood sheathing, concrete, CMUs, etc..

DRAWN BY: AFG DATE: 10.10.2014

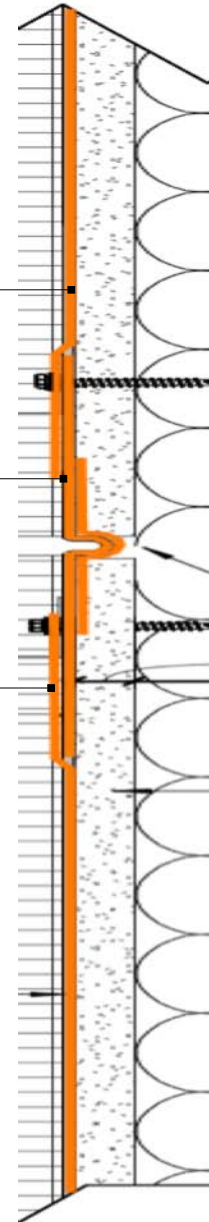
Always check www.vaproshield.com for the latest details and installation instructions

WrapShield SA Expansion or Contraction Joint

Substrate in "as new" condition

VaproFlashing SA 11.75" with "loop" adhere 3" strip to center of WrapShield SA to back side: adhesive to adhesive

WrapShield SA Self-Adhered WRB/AB Field Membrane lap onto VaproFlashing SA min. 3"



Plan View (NTS)

WRAPSHIELD SA[®]
 SELF-ADHERED

A Vapor permeable, weather-resistive, air barrier self-adhered membrane with VaproLiqui-Flash vapor permeable, liquid applied flashing system.

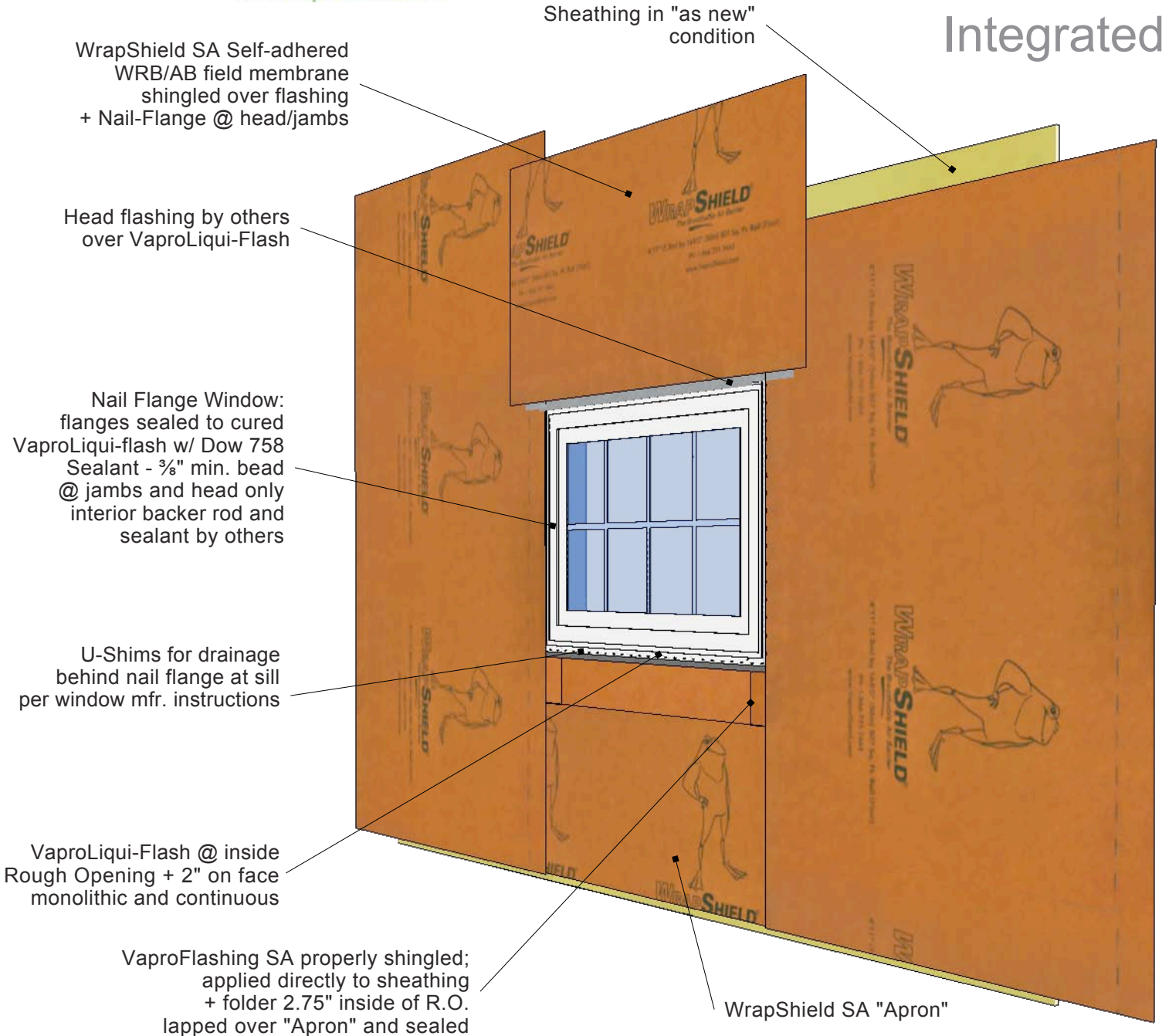
DESCRIPTION:

WrapShield SA with VaproLiqui-Flash and VaproFlashing SA (Self-Adhered) creates a complete air barrier membrane over gypsum or plywood sheathing, concrete, CMUs, etc..

DRAWN BY: AFG DATE: 10.10.2014

Always check www.vaproshield.com for the latest details and installation instructions

WrapShield SA Nail-Flange Window Detail Integrated



WRAPSHIELD SA[®]
SELF-ADHERED

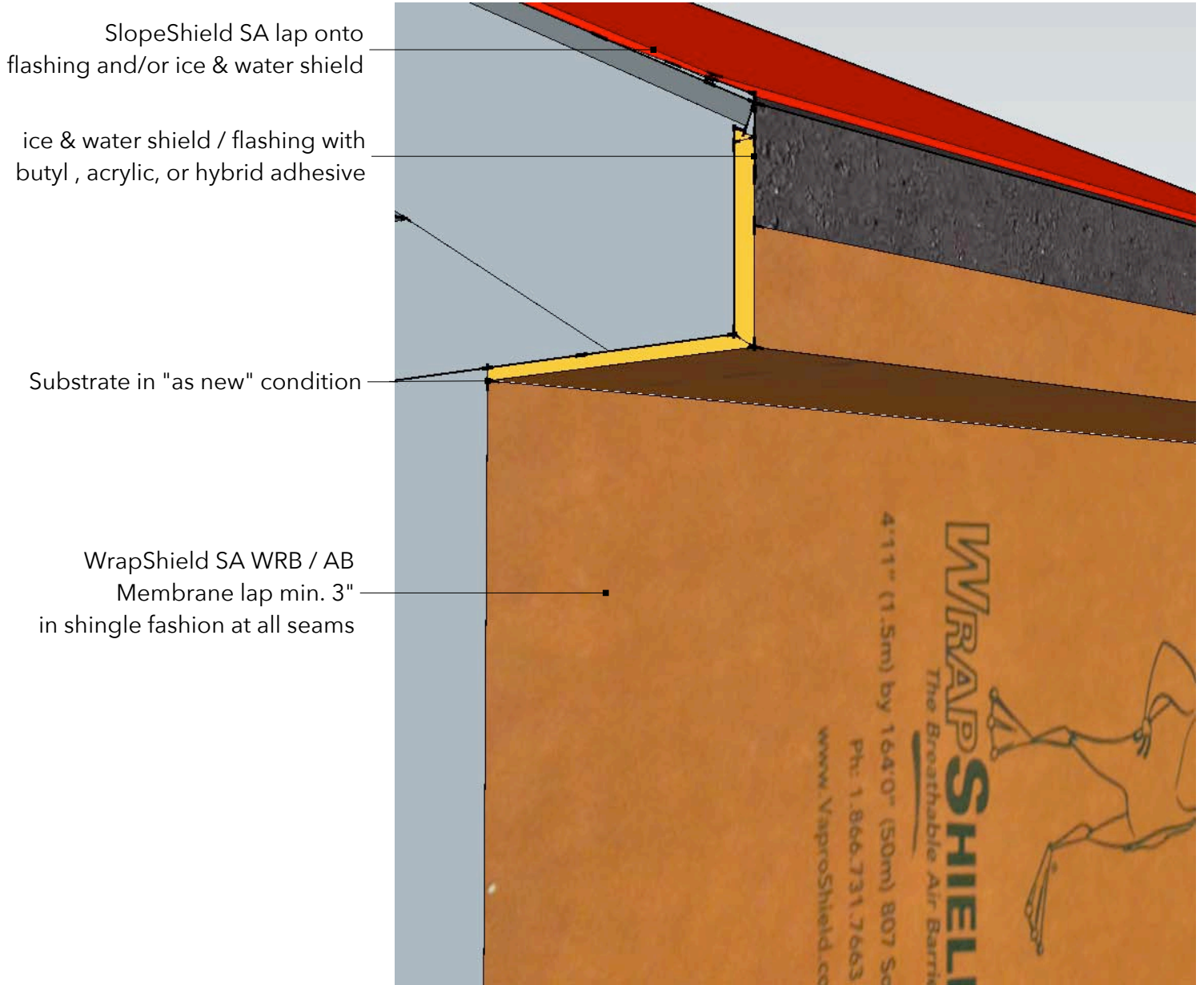
A Vapor permeable, weather-resistant, air barrier self-adhered membrane with VaproLiqui-Flash vapor permeable, liquid applied flashing system.

DESCRIPTION:

WrapShield SA with VaproLiqui-Flash and VaproFlashing SA (Self-Adhered) creates a complete air barrier membrane over gypsum or plywood sheathing, concrete, and CMU blocks.

DRAWN BY: AFG DATE: 02.21.2013

Always check www.vaproshield.com for the latest details and installation instructions



WRAPSHIELD SA[®]
 SELF-ADHERED

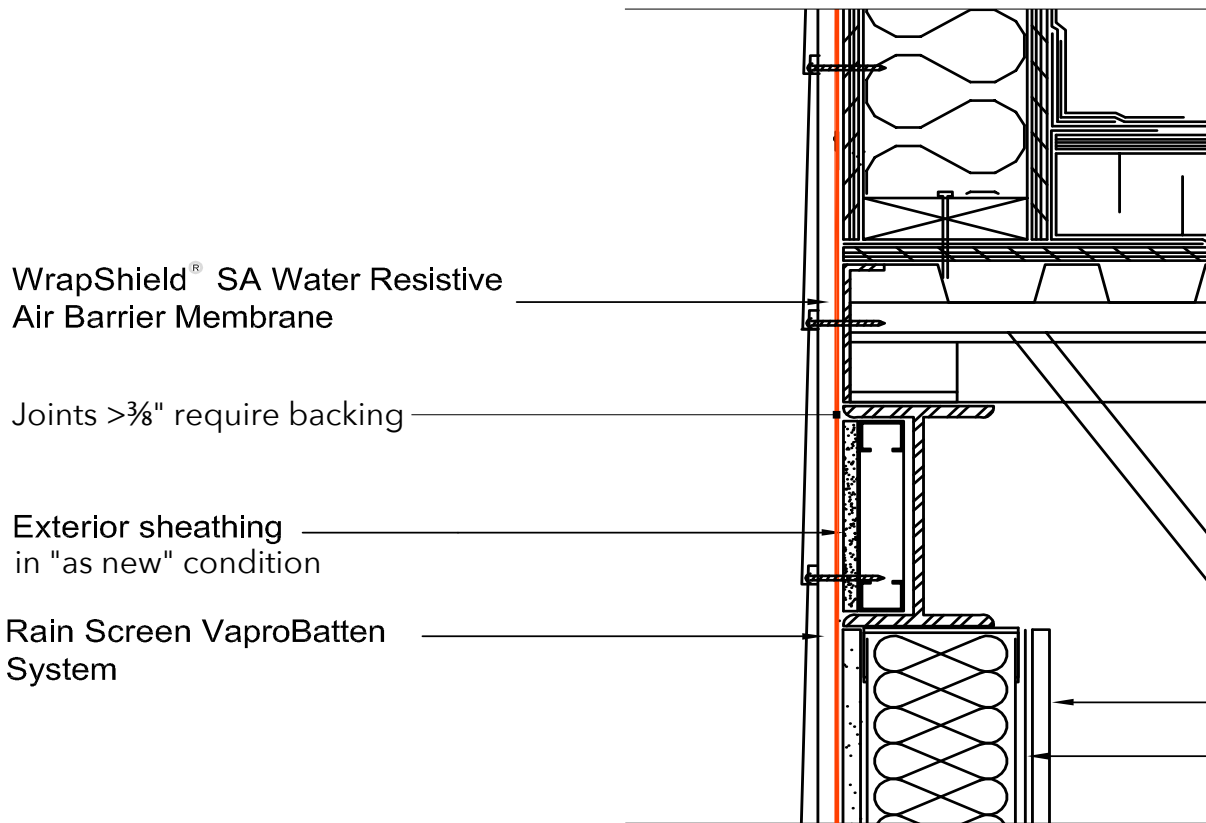
A Vapor permeable, weather-resistive, air barrier self-adhered membrane with VaproLiqui-Flash vapor permeable, liquid applied flashing system.

DESCRIPTION:

WrapShield SA with VaproLiqui-Flash and VaproFlashing SA (Self-Adhered) creates a complete air barrier membrane over gypsum or plywood sheathing, concrete, CMUs, etc..

DRAWN BY: AFG DATE: 10.10.2014

Always check www.vaproshield.com for the latest details and installation instructions



WrapShield[®] SA Water Resistant
 Air Barrier Membrane

Joints > 3/8" require backing

Exterior sheathing
 in "as new" condition

Rain Screen VaproBatten
 System

WRAPSHIELD SA[®]
 SELF-ADHERED

A Vapor permeable, weather-resistant, air barrier self-adhered membrane with VaproLiqui-Flash vapor permeable, liquid applied flashing system.

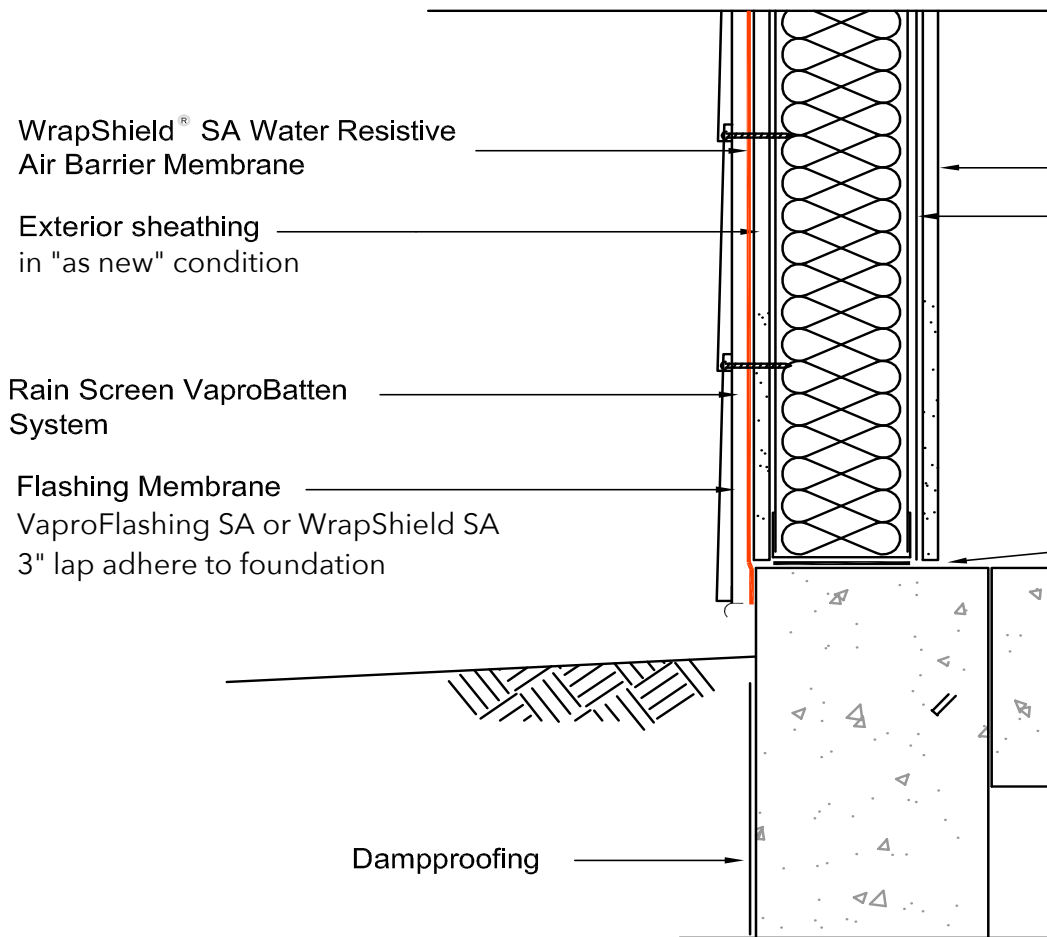
DESCRIPTION:

WrapShield SA with VaproLiqui-Flash and VaproFlashing SA (Self-Adhered) creates a complete air barrier membrane over gypsum or plywood sheathing, concrete, CMUs, etc..

DRAWN BY: AFG DATE: 10.10.2014

Always check www.vaproshield.com for the latest details and installation instructions

WrapShield SA Wall to Foundation



WRAPSHIELD SA[®]
SELF-ADHERED

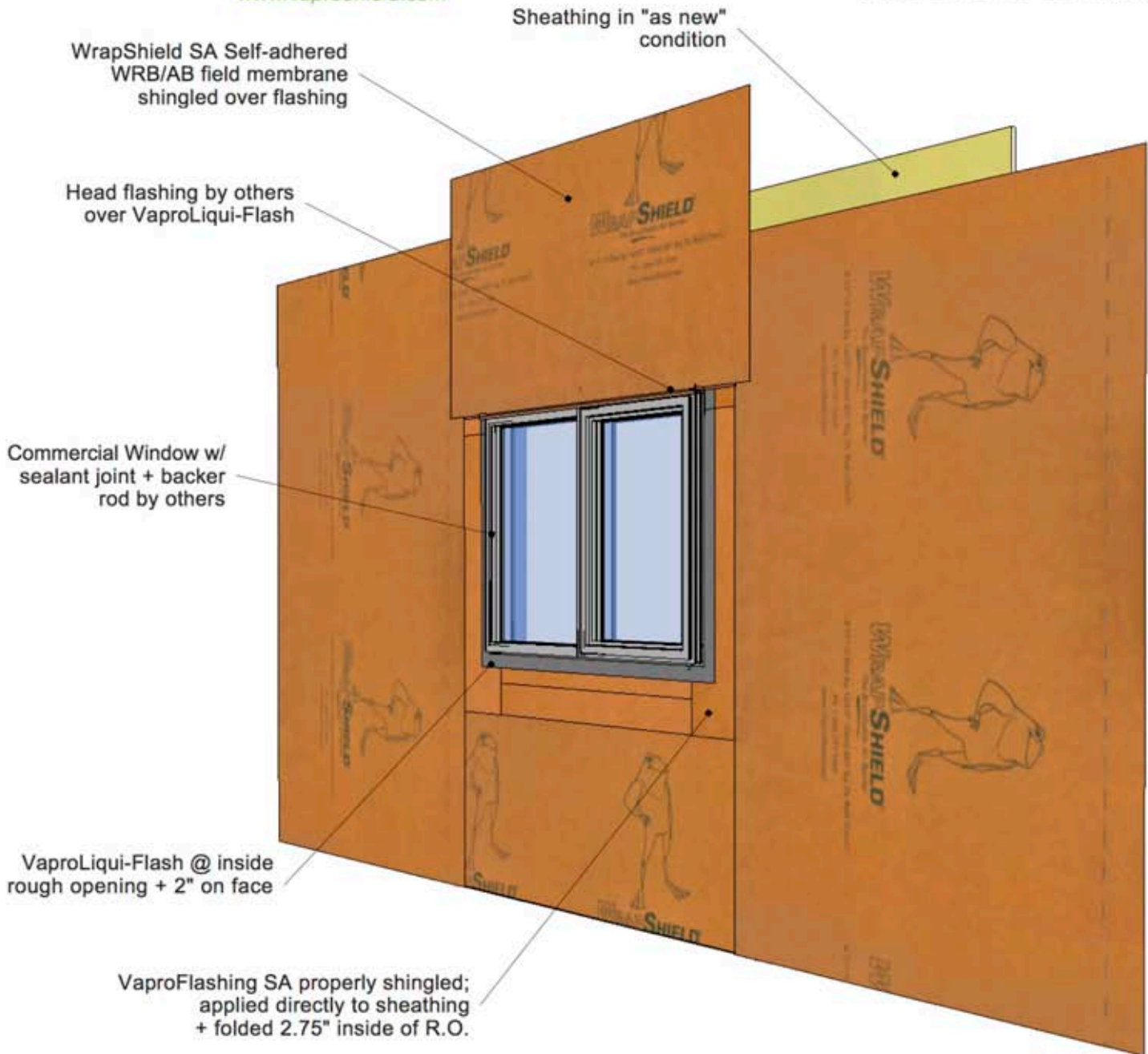
A Vapor permeable, weather-resistive, air barrier self-adhered membrane with VaproLiqui-Flash vapor permeable, liquid applied flashing system.

DESCRIPTION:

WrapShield SA with VaproLiqui-Flash and VaproFlashing SA (Self-Adhered) creates a complete air barrier membrane over gypsum or plywood sheathing, concrete, CMUs, etc..

DRAWN BY: AFG DATE: 10.10.2014

Always check www.vaproshield.com for the latest details and installation instructions



WRAPSHIELD SA
SELF-ADHERED

A Vapor permeable, weather-resistive, air barrier self-adhered membrane with **VaproLiqui-Flash** vapor permeable, liquid applied flashing system over **VaproFlashing SA** self-adhered breathable flashing

DESCRIPTION:

WrapShield SA with VaproLiqui-Flash and VaproFlashing SA (Self-Adhered) creates a complete air barrier membrane over gypsum or plywood sheathing, concrete, and CMU blocks.

DRAWN BY: AFG DATE: 23.09.2012

Always check www.vaproshield.com for the latest details and installation instructions