

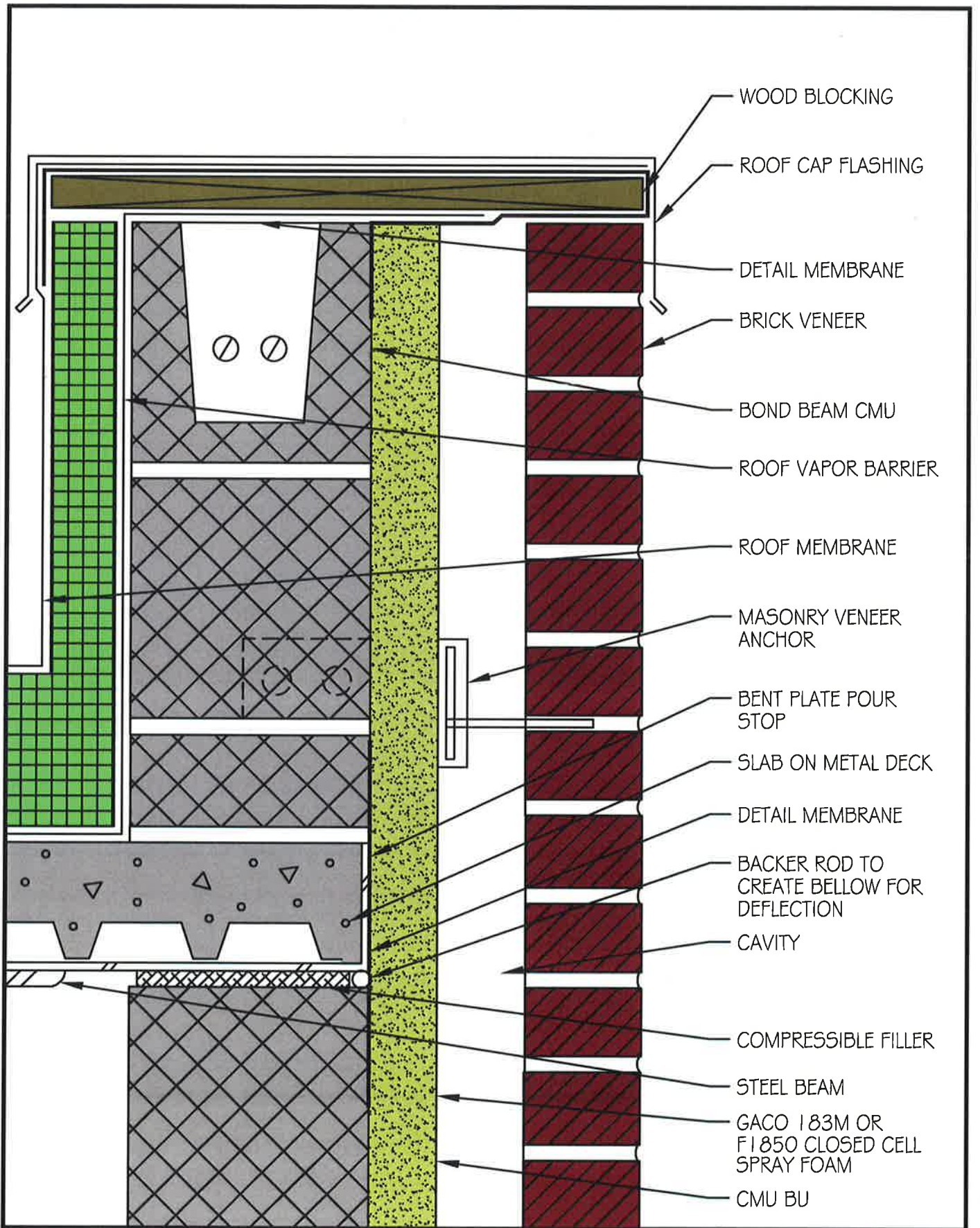
**Gaco Western**  
SINCE 1965

TITLE:

**ROOF DETAIL 1  
CMU**

DWG. NO. **GW-AB-01**

DATE: **1-4-2017**

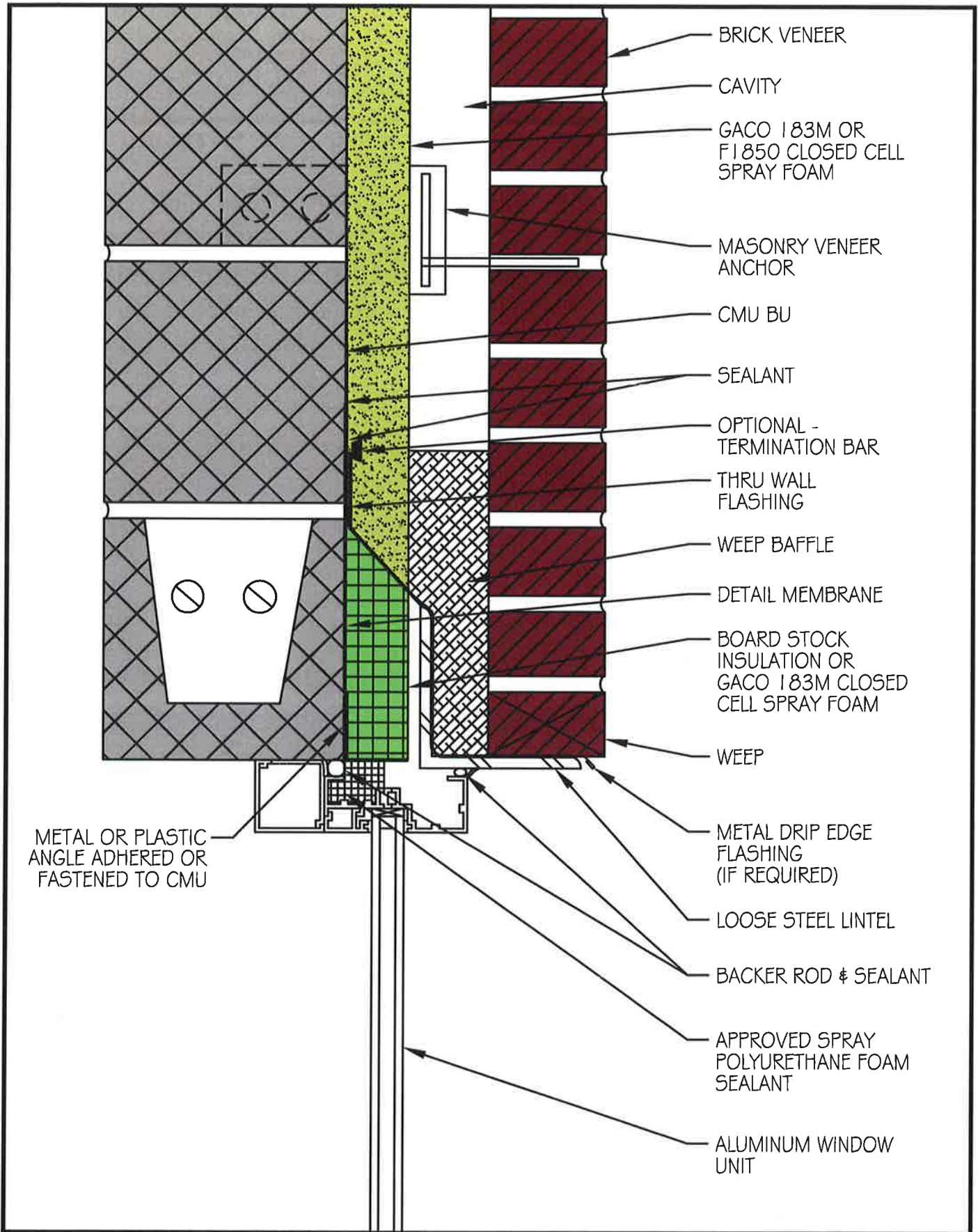


**Gaco Western**  
SINCE 1988

TITLE:  
**ROOF DETAIL 2  
CMU**

DWG. NO. **GW-AB-02**

DATE: **1-4-2017**



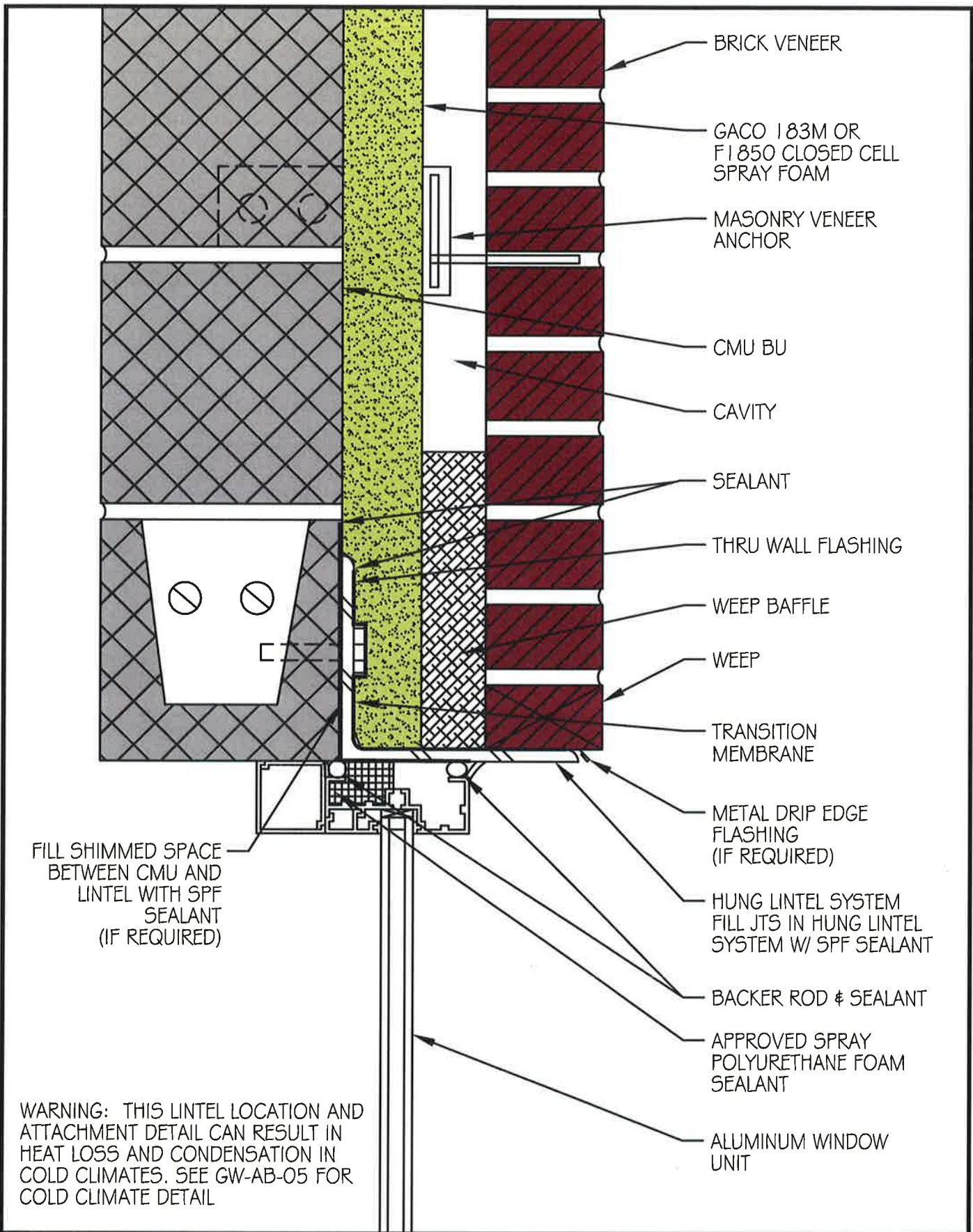
**Gaco Western**  
SINCE 1986

TITLE:

**HEAD DETAIL 1  
CMU - COLD CLIMATE**

DWG. NO. **GW-AB-03**

DATE: **1-4-2017**

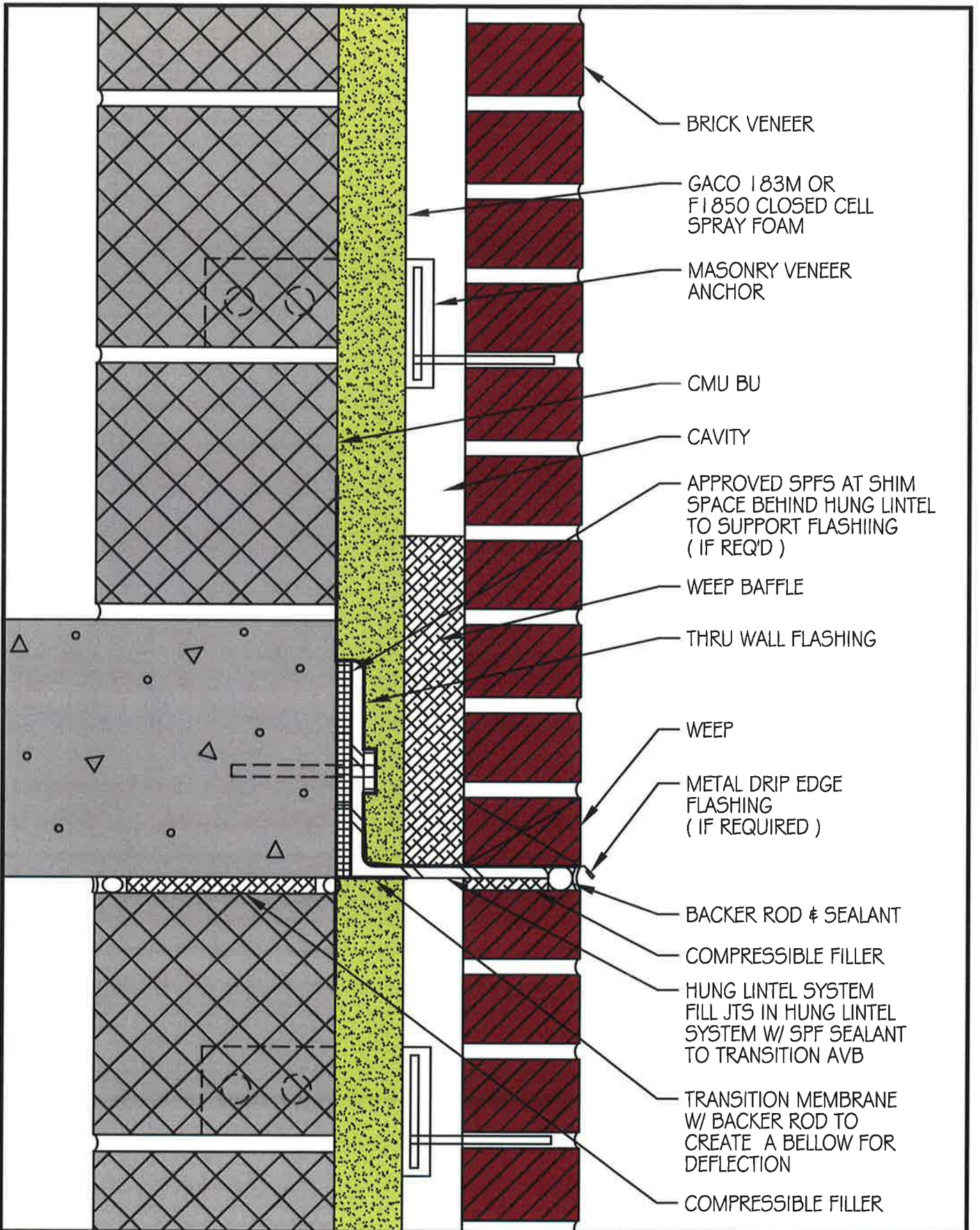


**Gaco Western**  
SINCE 1966

TITLE:  
**HEAD DETAIL 2  
CMU**

DWG. NO. **GW-AB-04**

DATE: **1-4-2017**



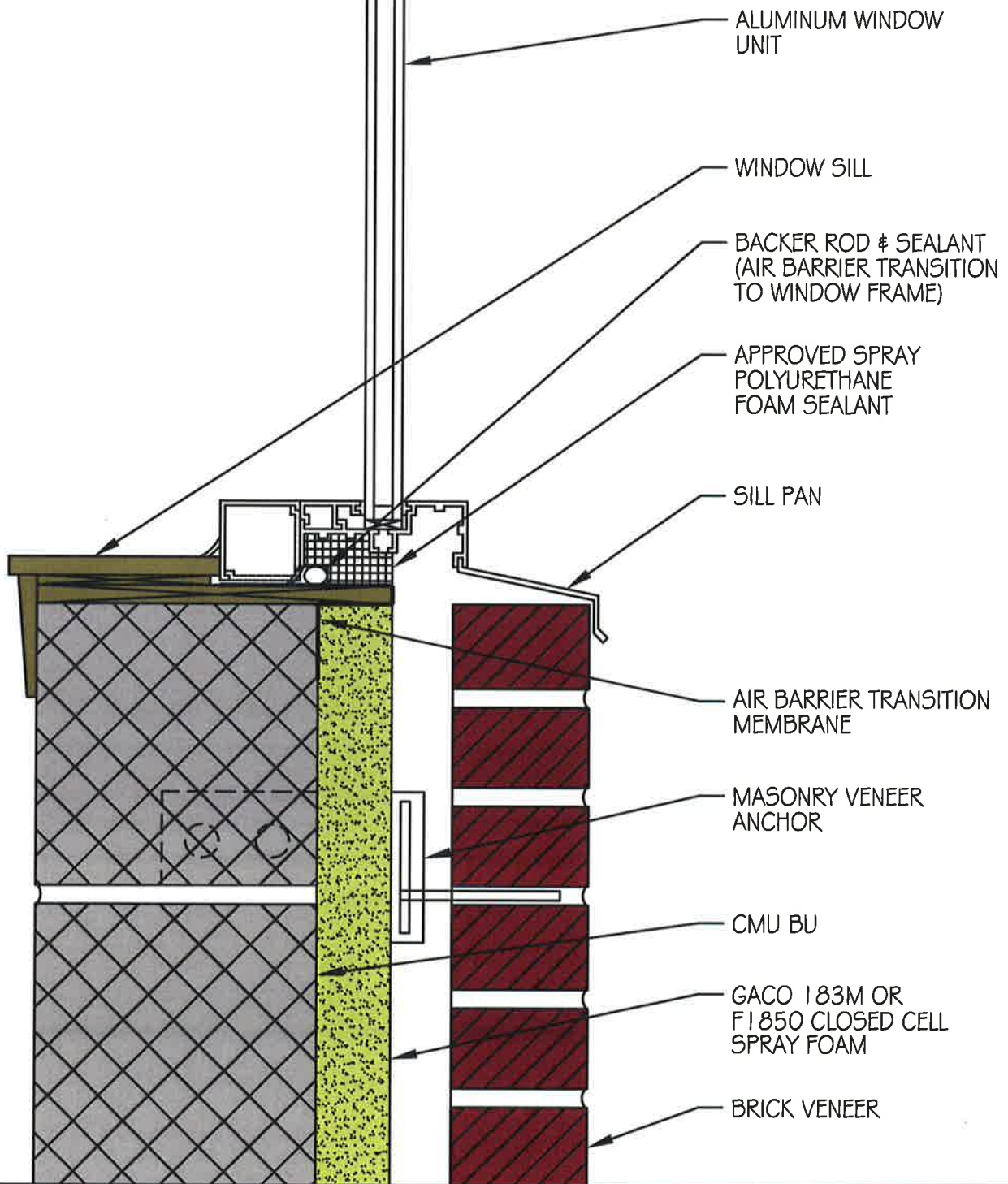
**Gaco Western**  
SINCE 1955

TITLE:

**RELIEVING ANGLE 1  
CMU**

DWG. NO. **GW-AB-05**

DATE: **1-4-2017**

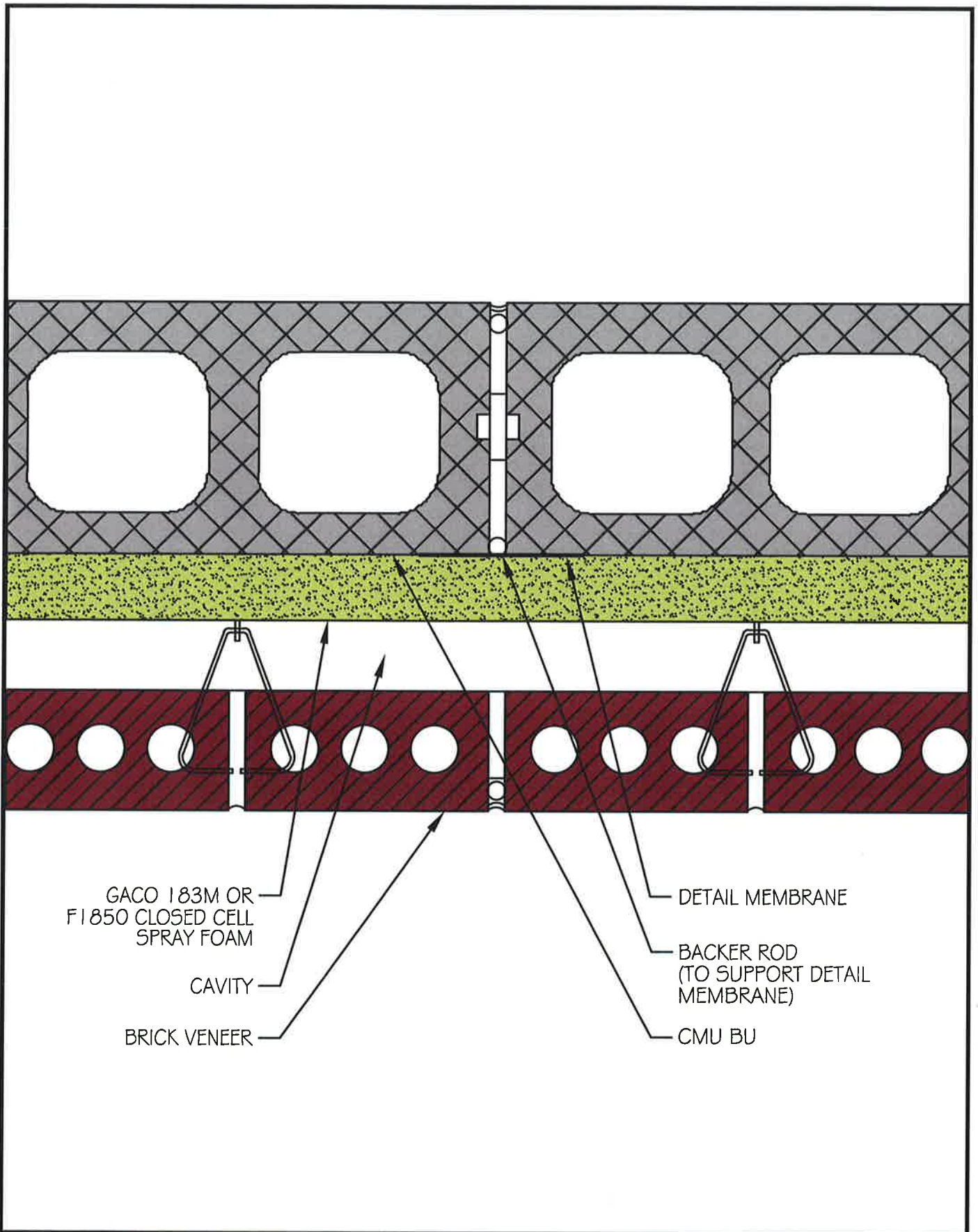


**Gaco Western**  
SINCE 1985

TITLE:  
**SILL 1  
CMU**

DWG. NO. **GW-AB-06**

DATE: **1-4-2017**



GACO 183M OR  
F1850 CLOSED CELL  
SPRAY FOAM

CAVITY

BRICK VENEER

DETAIL MEMBRANE

BACKER ROD  
(TO SUPPORT DETAIL  
MEMBRANE)

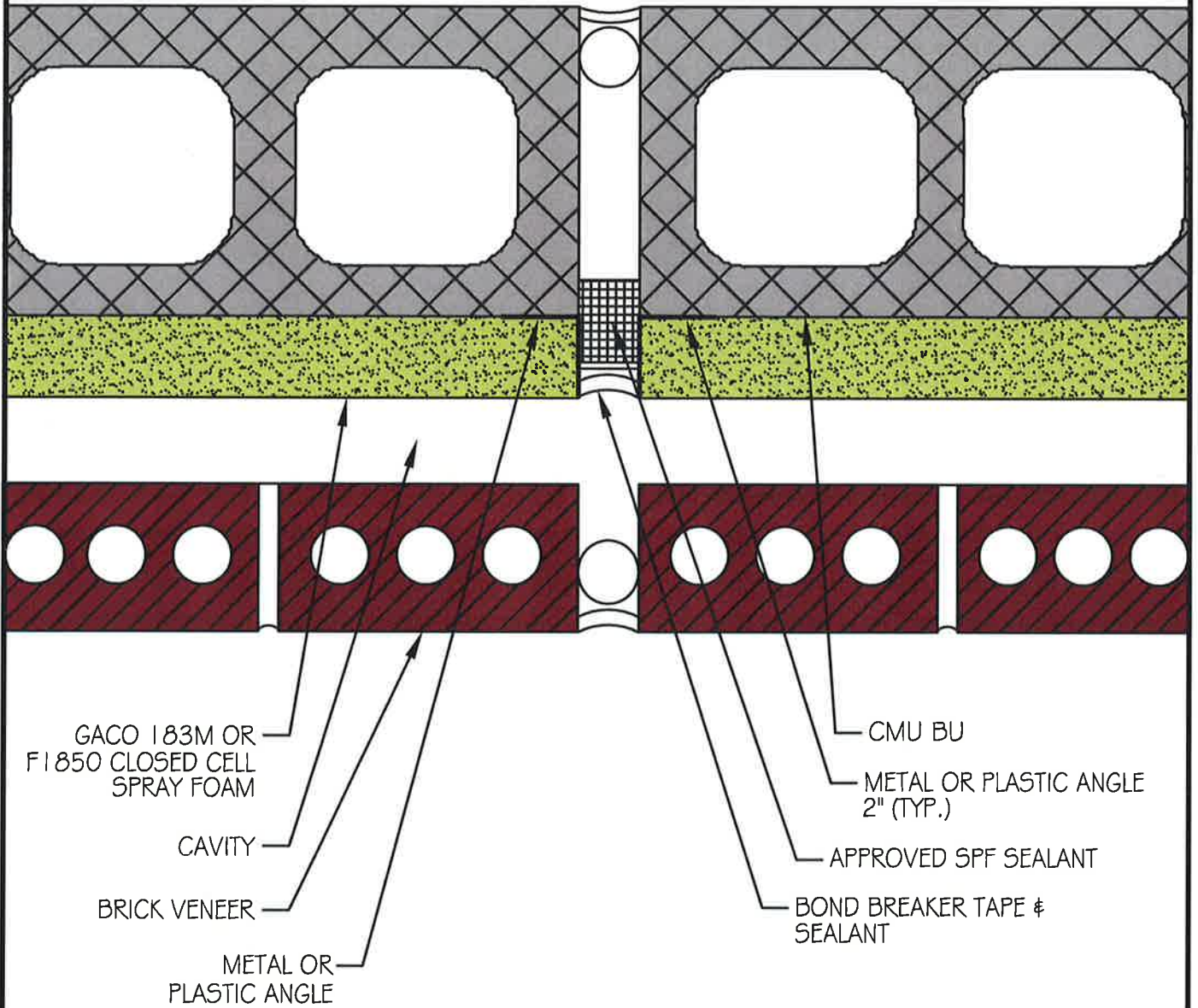
CMU BU

**Gaco Western**  
SINCE 1966

TITLE:  
**CONTROL JOINT  
CMU**

DWG. NO. **GW-AB-07**

DATE: **1-4-2017**



GACO 183M OR  
F1850 CLOSED CELL  
SPRAY FOAM

CAVITY

BRICK VENEER

METAL OR  
PLASTIC ANGLE

CMU BU

METAL OR PLASTIC ANGLE  
2" (TYP.)

APPROVED SPF SEALANT

BOND BREAKER TAPE &  
SEALANT

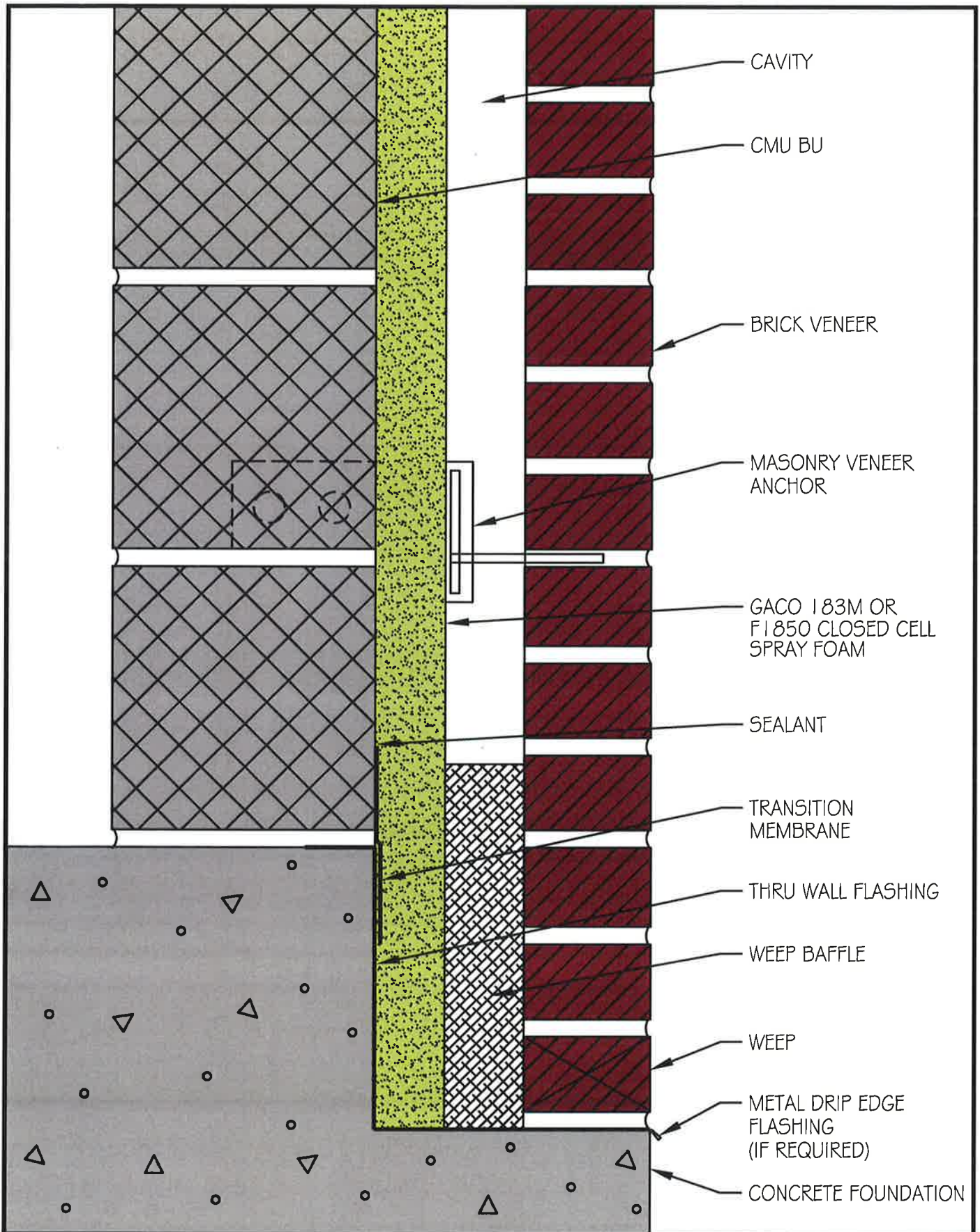
**Gaco Western**  
SINCE 1966

TITLE:  
**EXPANSION JOINT  
CMU**

DWG. NO. **GW-AB-08**

DATE: **1-4-2017**



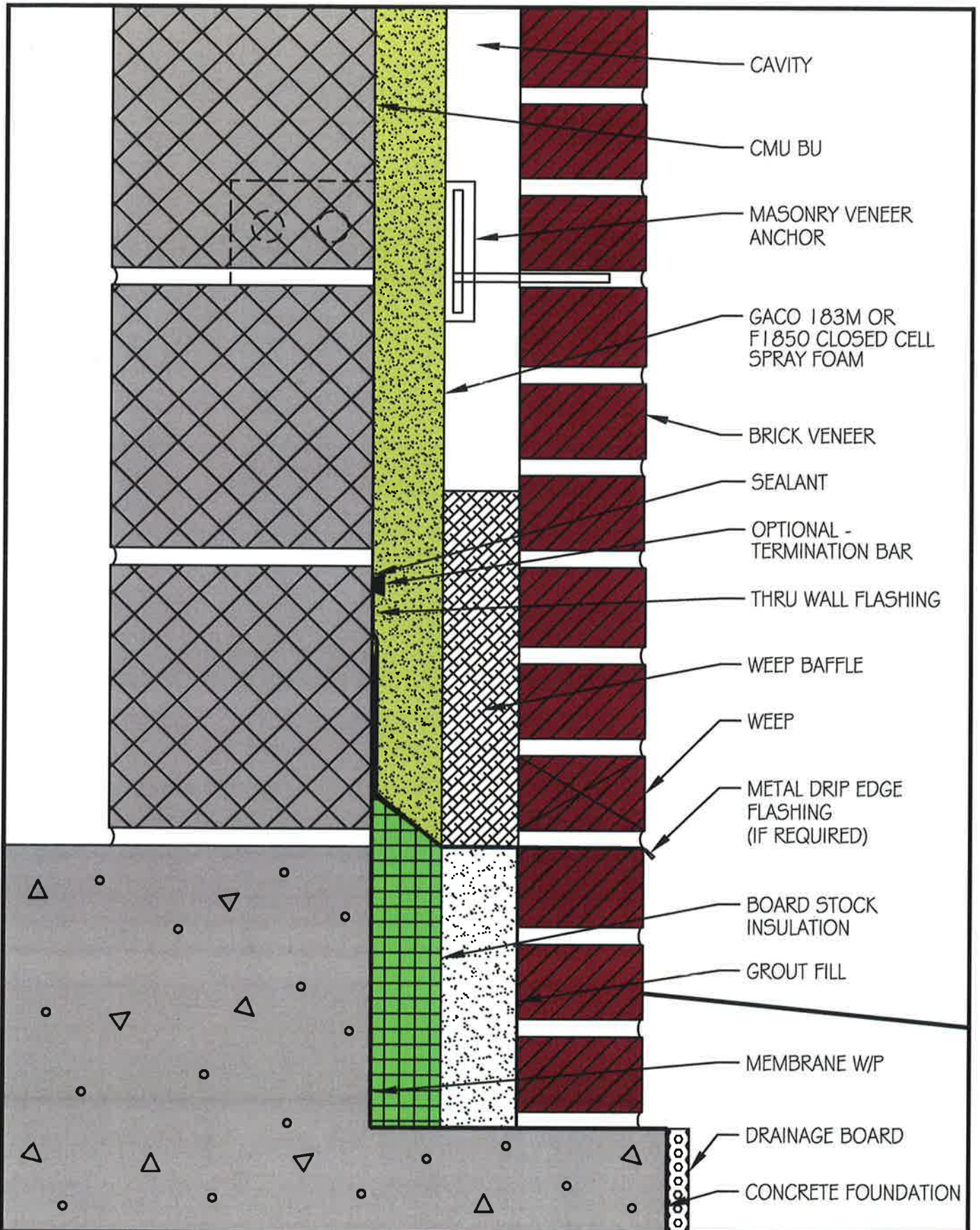


**Gaco Western**  
SINCE 1966

TITLE:  
**WALL BASE 1  
CMU**

DWG. NO. **GW-AB-09**

DATE: **1-4-2017**

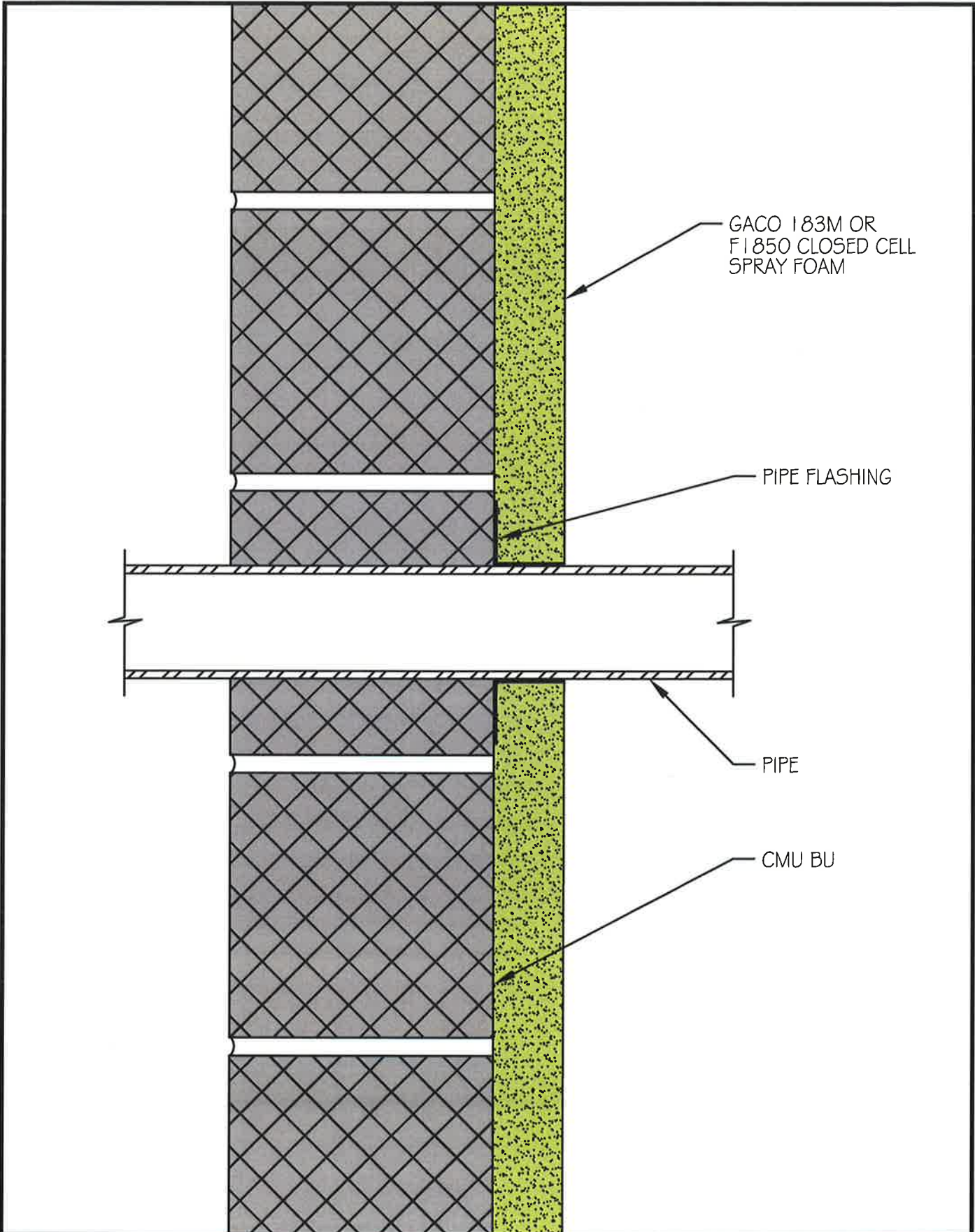


**Gaco Western**  
SINCE 1968

TITLE:  
**WALL BASE 2**  
**CMU - GC**

DWG. NO. **GW-AB-10**

DATE: **1-4-2017**



GACO 183M OR  
F1850 CLOSED CELL  
SPRAY FOAM

PIPE FLASHING

PIPE

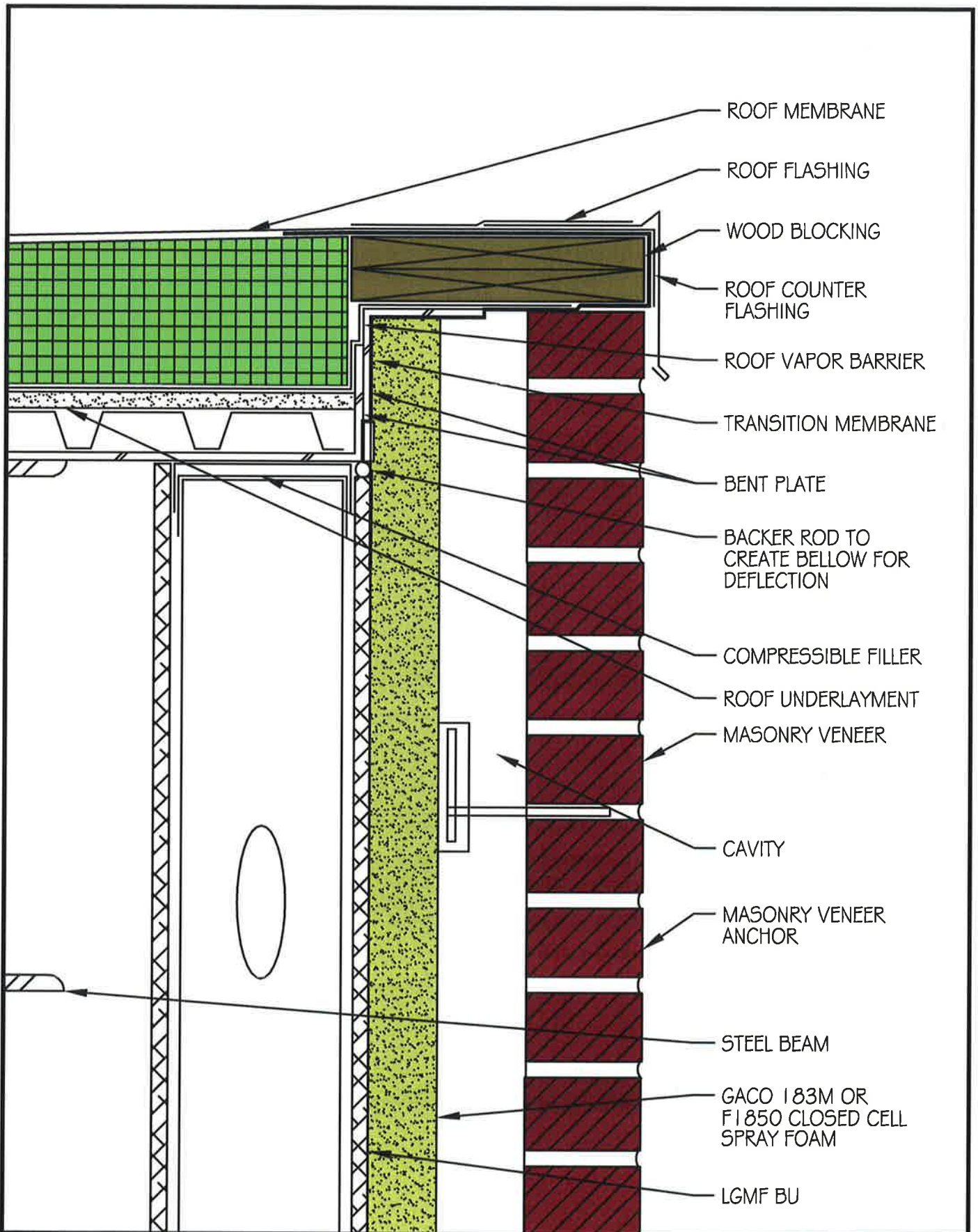
CMU BU

**Gaco Western**  
SINCE 1966

TITLE:  
**PIPE FLASHING  
CMU**

DWG. NO. **GW-AB-11**

DATE: **1-4-2017**



ROOF MEMBRANE

ROOF FLASHING

WOOD BLOCKING

ROOF COUNTER FLASHING

ROOF VAPOR BARRIER

TRANSITION MEMBRANE

BENT PLATE

BACKER ROD TO  
CREATE BELLOWS FOR  
DEFLECTION

COMPRESSIBLE FILLER

ROOF UNDERLAYMENT

MASONRY VENEER

CAVITY

MASONRY VENEER  
ANCHOR

STEEL BEAM

GACO 183M OR  
F1850 CLOSED CELL  
SPRAY FOAM

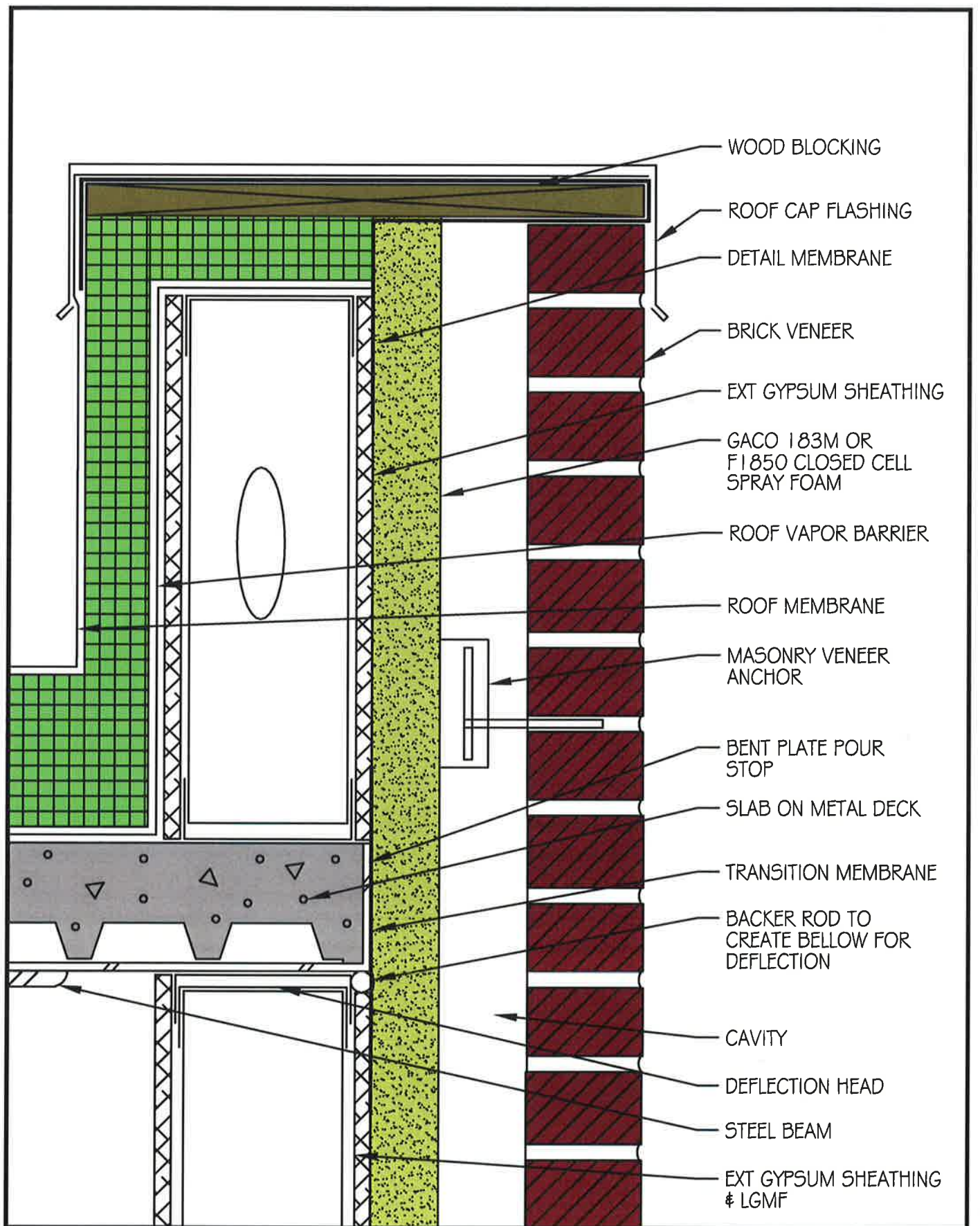
LGFM BU

**Gaco Western**  
SINCE 1968

TITLE:  
**ROOF DETAIL 1**  
**LGFM**

DWG. NO. **GW-AB-40**

DATE: **1-4-2017**

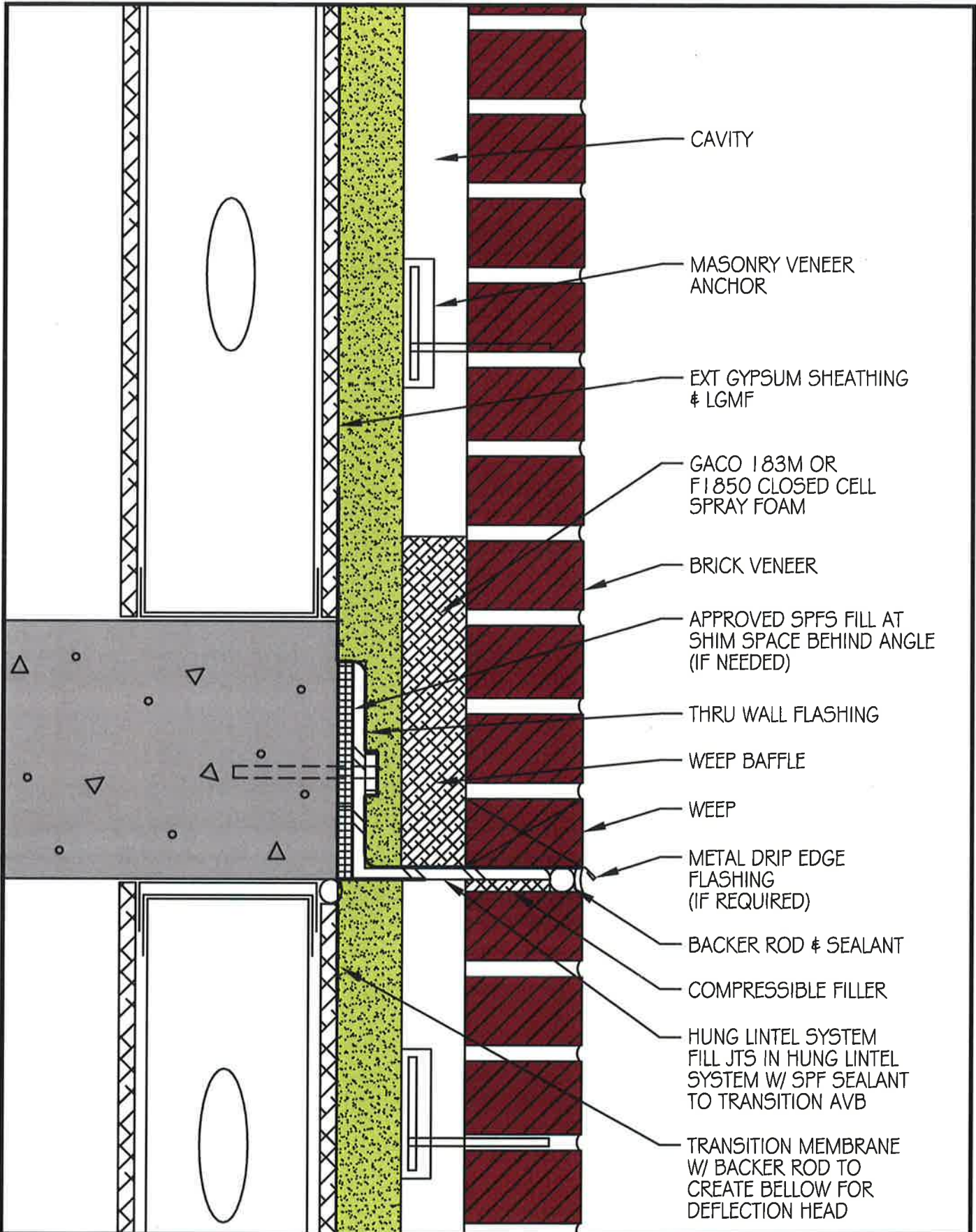


**Gaco Western**  
SINCE 1955

TITLE:  
**ROOF DETAIL 2**  
**LGMF**

DWG. NO. **GW-AB-41**

DATE: **1-4-2017**



CAVITY

MASONRY VENEER ANCHOR

EXT GYPSUM SHEATHING & LGMF

GACO 183M OR F1850 CLOSED CELL SPRAY FOAM

BRICK VENEER

APPROVED SPFS FILL AT SHIM SPACE BEHIND ANGLE (IF NEEDED)

THRU WALL FLASHING

WEEP BAFFLE

WEEP

METAL DRIP EDGE FLASHING (IF REQUIRED)

BACKER ROD & SEALANT

COMPRESSIBLE FILLER

HUNG LINTEL SYSTEM FILL JTS IN HUNG LINTEL SYSTEM W/ SPFS SEALANT TO TRANSITION AVB

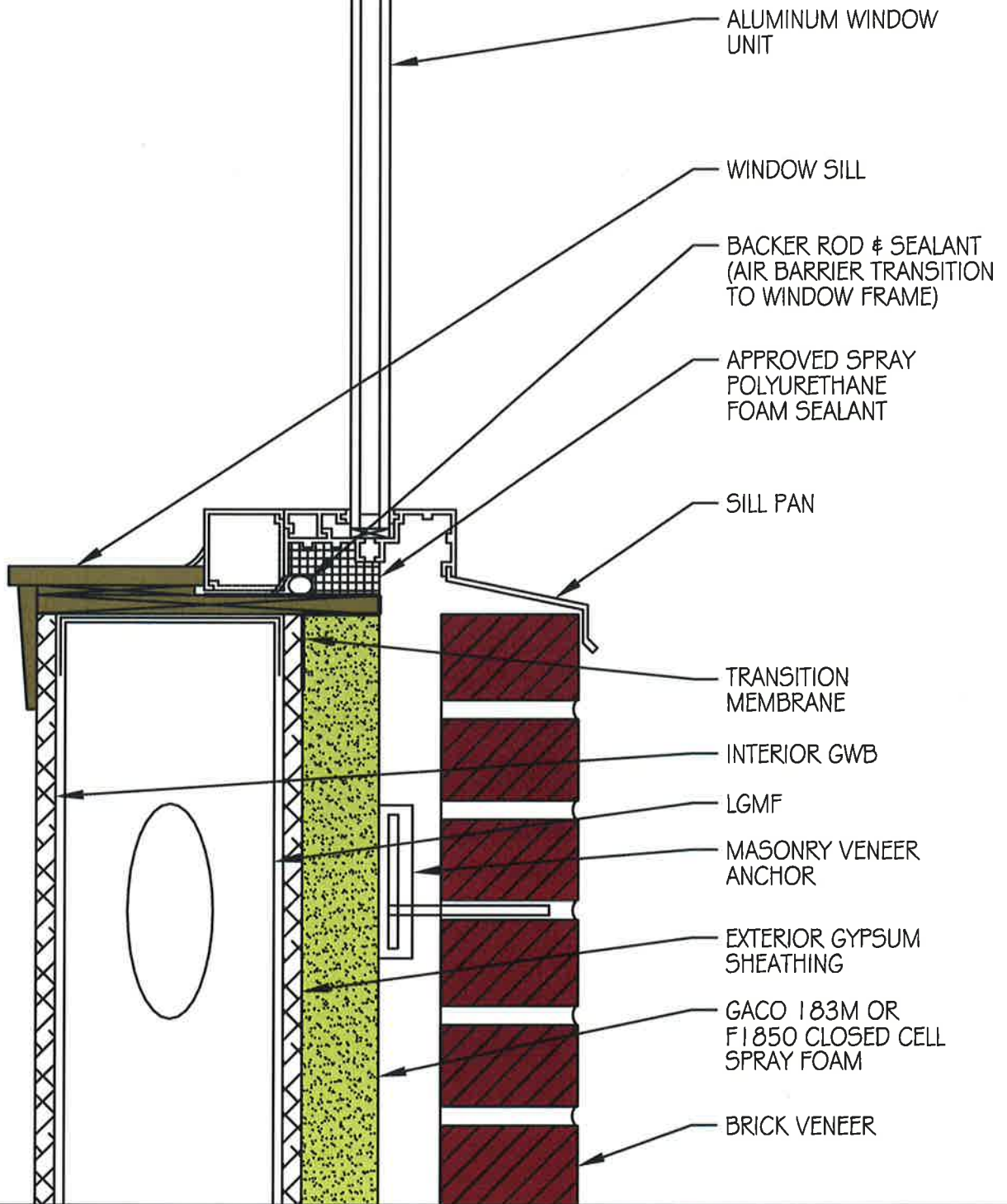
TRANSITION MEMBRANE W/ BACKER ROD TO CREATE BELOW FOR DEFLECTION HEAD

**Gaco Western**  
SINCE 1968

TITLE:  
**RELIEVING ANGLE 1  
LGMF**

DWG. NO. **GW-AB-42**

DATE: **1-4-2017**



ALUMINUM WINDOW UNIT

WINDOW SILL

BACKER ROD & SEALANT (AIR BARRIER TRANSITION TO WINDOW FRAME)

APPROVED SPRAY POLYURETHANE FOAM SEALANT

SILL PAN

TRANSITION MEMBRANE

INTERIOR GWB

LGMF

MASONRY VENEER ANCHOR

EXTERIOR GYPSUM SHEATHING

GACO 183M OR F1850 CLOSED CELL SPRAY FOAM

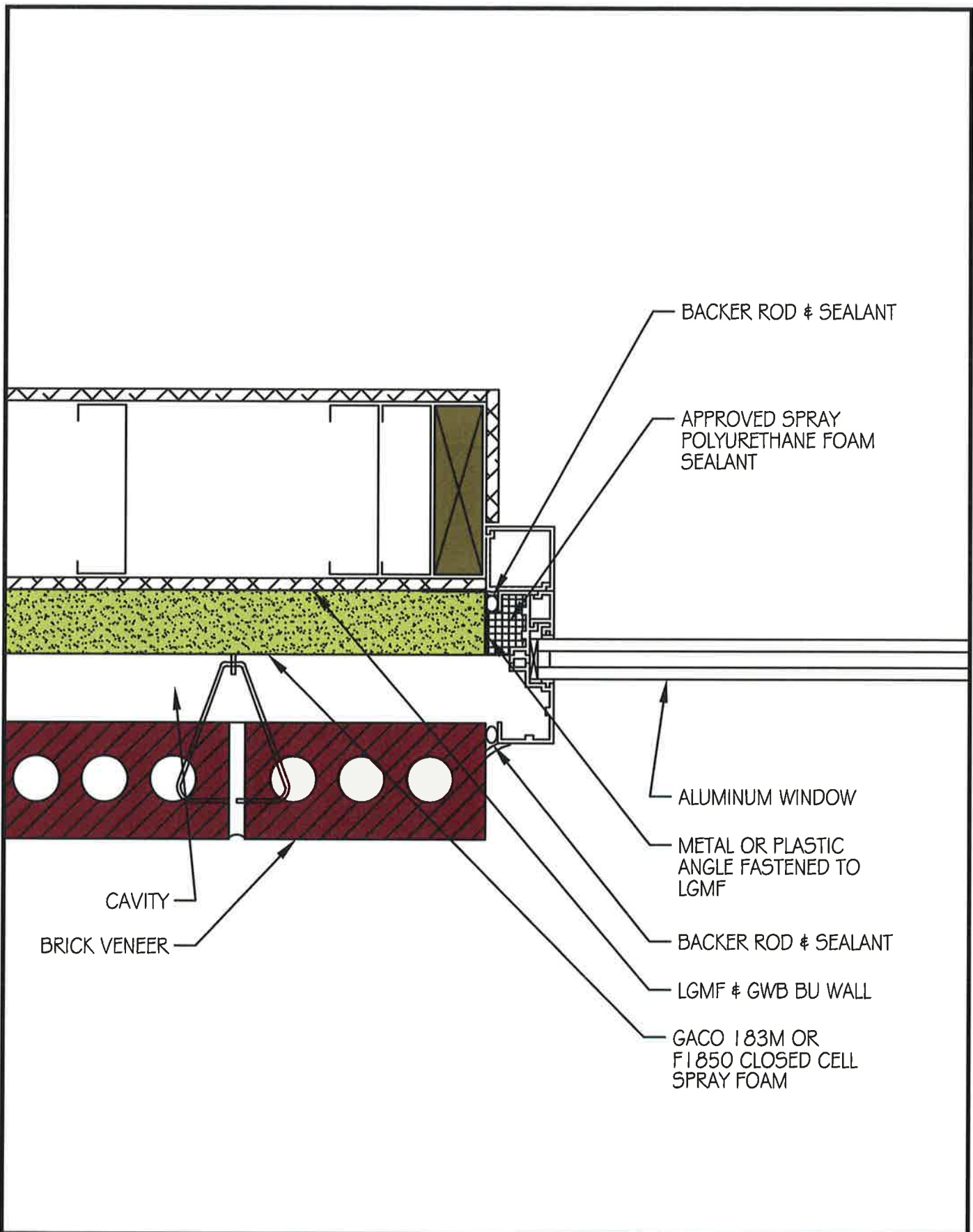
BRICK VENEER

**Gaco Western**  
SINCE 1988

TITLE:  
**SILL 1**  
**LGMF**

DWG. NO. **GW-AB-43**

DATE: **1-4-2017**



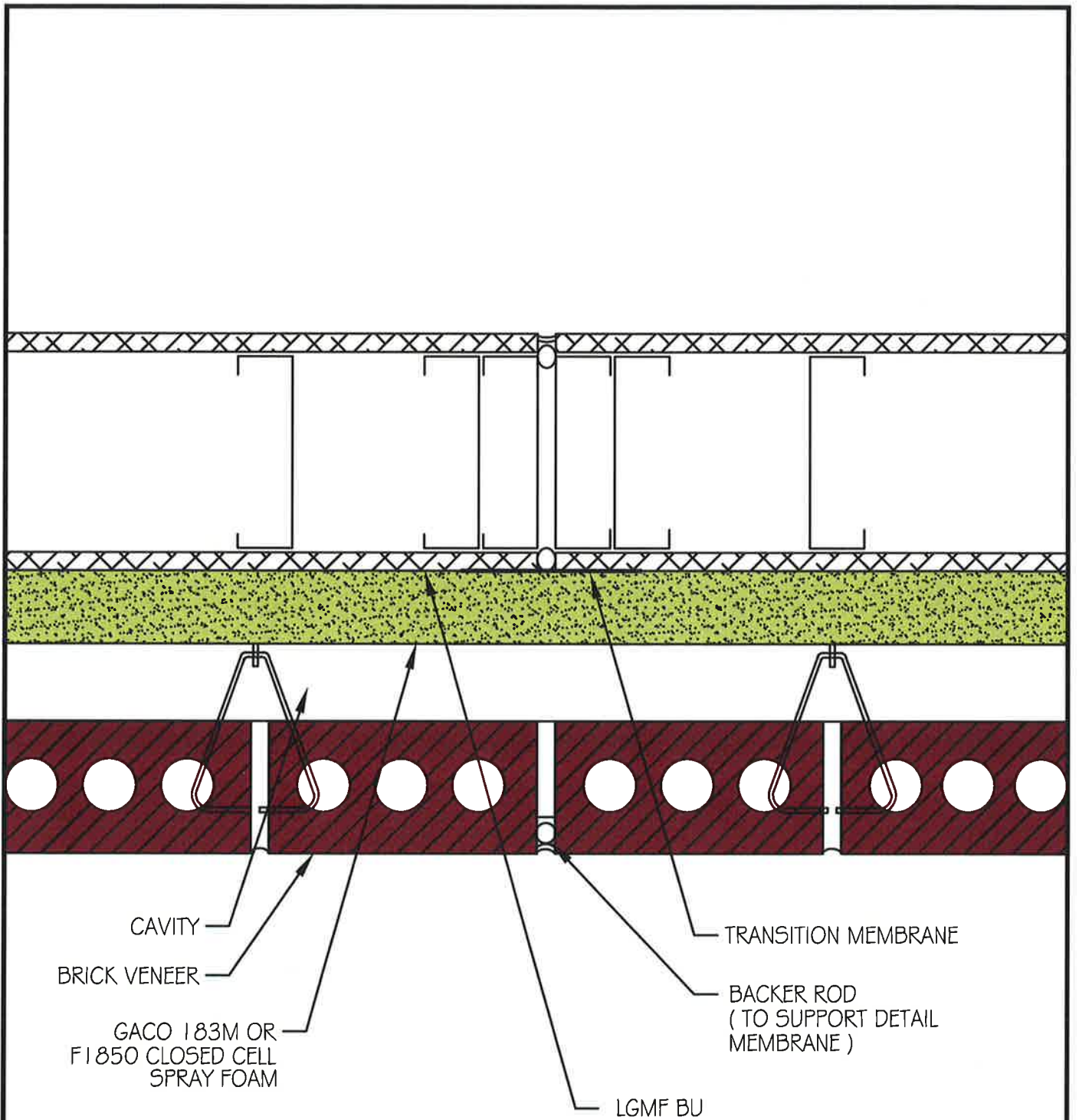
**Gaco Western**  
SINCE 1965

TITLE:  
**JAMB 1**  
**LGMF**

DWG. NO. **GW-AB-44**

DATE: **1-4-2017**



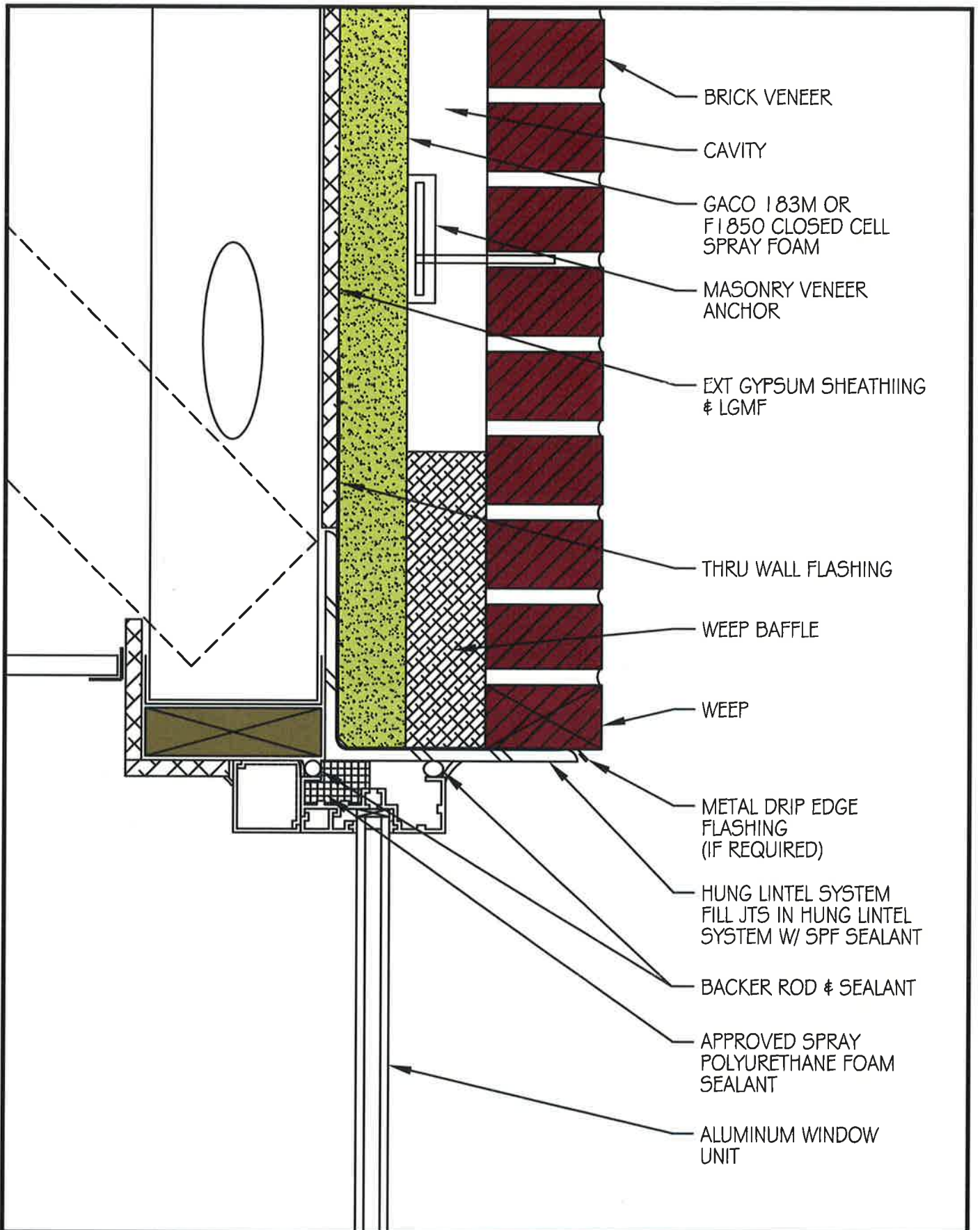


**Gaco Western**  
SINCE 1966

TITLE:  
**CONTROL JOINT  
LGMF**

DWG. NO. **GW-AB-45**

DATE: **1-4-2017**



BRICK VENEER

CAVITY

GACO 183M OR  
F1850 CLOSED CELL  
SPRAY FOAM

MASONRY VENEER  
ANCHOR

EXT GYPSUM SHEATHING  
& LGMF

THRU WALL FLASHING

WEEP BAFFLE

WEEP

METAL DRIP EDGE  
FLASHING  
(IF REQUIRED)

HUNG LINTEL SYSTEM  
FILL JTS IN HUNG LINTEL  
SYSTEM W/ SPF SEALANT

BACKER ROD & SEALANT

APPROVED SPRAY  
POLYURETHANE FOAM  
SEALANT

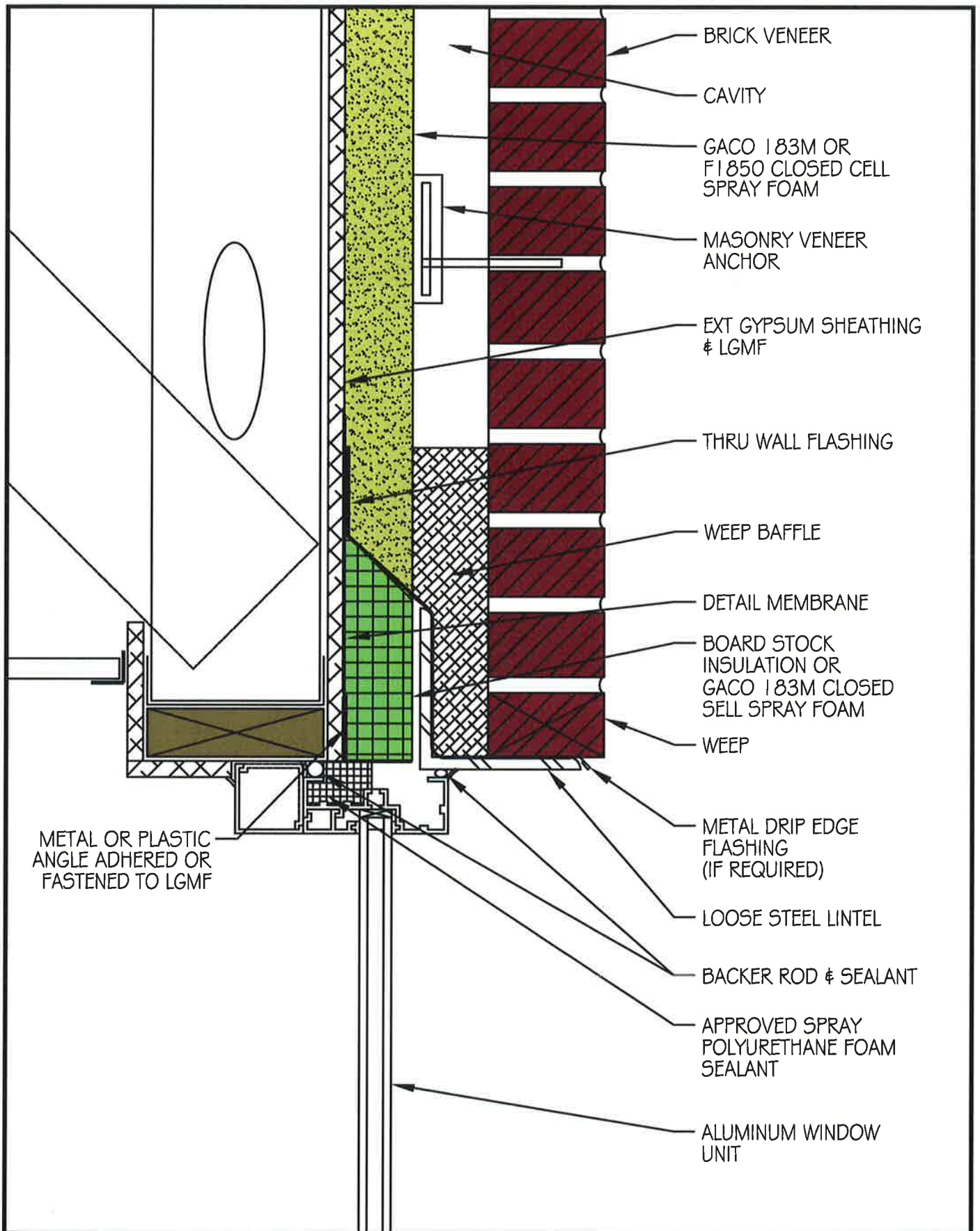
ALUMINUM WINDOW  
UNIT

**Gaco Western**  
SINCE 1986

TITLE:  
**HEAD DETAIL 1**  
**LGMF**

DWG. NO. **GW-AB-46**

DATE: **1-4-2017**



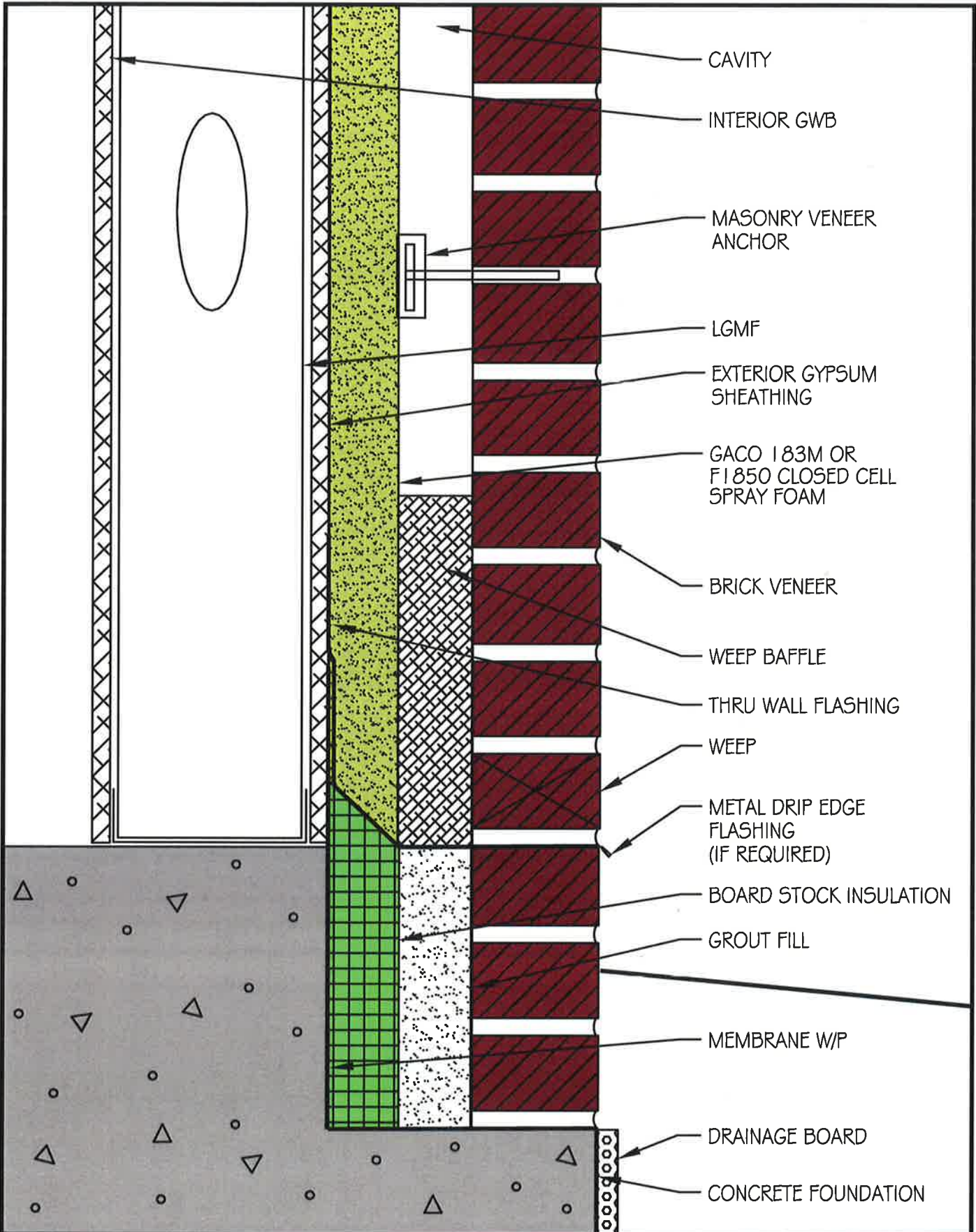
**Gaco Western**  
SINCE 1966

TITLE:

**HEAD DETAIL 2  
LGMF - COLD CLIMATE**

DWG. NO. **GW-AB-47**

DATE: **1-4-2017**



- CAVITY
- INTERIOR GWB
- MASONRY VENEER ANCHOR
- LGMF
- EXTERIOR GYPSUM SHEATHING
- GACO 183M OR F1850 CLOSED CELL SPRAY FOAM
- BRICK VENEER
- WEEP BAFFLE
- THRU WALL FLASHING
- WEEP
- METAL DRIP EDGE FLASHING (IF REQUIRED)
- BOARD STOCK INSULATION
- GROUT FILL
- MEMBRANE W/P
- DRAINAGE BOARD
- CONCRETE FOUNDATION

**Gaco Western**  
SINCE 1968

TITLE:  
**WALL BASE  
LGMF**

DWG. NO. **GW-AB-48**

DATE: **1-4-2017**