

SECTION VIEW

DATE: 3/18/16

SCALE: NTS



MINIMUM 8" RISE
FROM TOP OF ANGLE
TO FLASHING JOIN CMU

NOTE: THERE WOULD BE
NO VOID BETWEEN CMU
& ANGLE IF THE ANGLE
WAS FIXED

THRU-WALL FLASHING

TRANSITION
MEMBRANE
OR A/V BARRIER

FOAM SEALANT

HEAD

OPTION: FOAM BOARD
CAN BE USED TO LIMIT
THICKNESS OF SPF UNDER
FLASHING, IN THIS DECISION
TRANSITION MEMBRANE
SHOULD TERMINATE BEYOND
FLASHING UNDER SPF.

HEATLOK® XT

TRANSITION
MEMBRANE
OR A/V BARRIER

CONCRETE
MASONRY UNIT

JAMB

GYPSUM BOARD

SEALANT AND
BACKER-ROD

BRICK VENEER

AIR SPACE

PLYWOOD
STOP

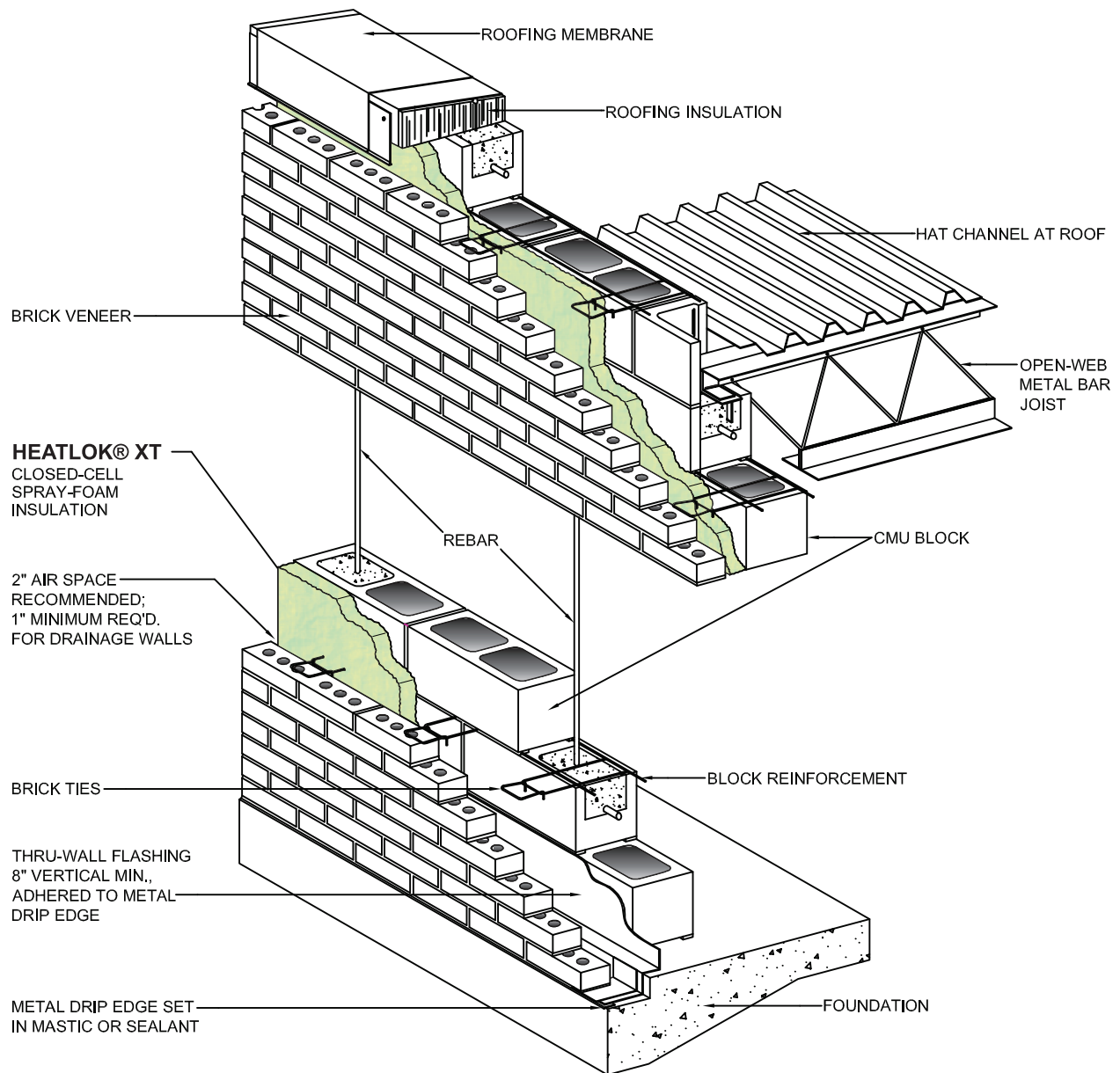
SILL

SECTION VIEW

DATE: 3/18/16

SCALE: NTS



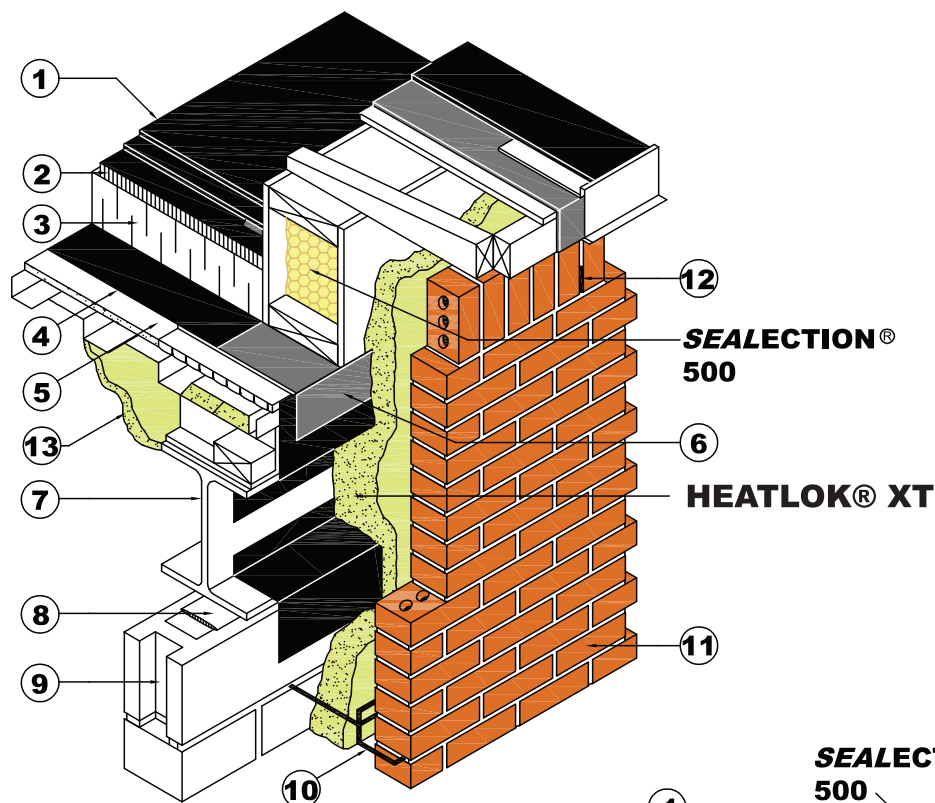


ISOMETRIC VIEW

DATE: 3/18/16

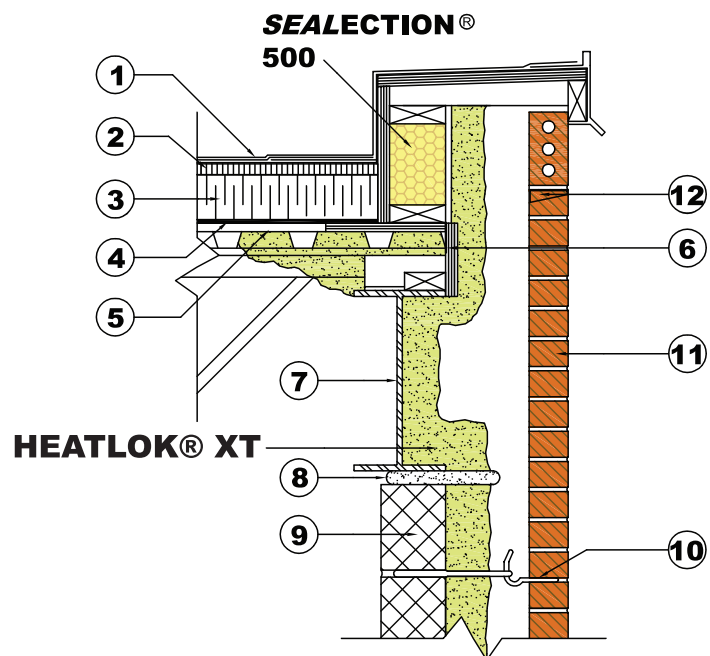
SCALE: NTS





ROOF / WALL

- | | |
|-----------------------|-------------------|
| ① Roofing membrane | ⑧ Cushion foam |
| ② Fiber board | ⑨ Concrete block |
| ③ Roofing insulation | ⑩ Brick ties |
| ④ Vapor barrier | ⑪ Brick |
| ⑤ Gypsum board | ⑫ Air-vent |
| ⑥ Transition membrane | ⑬ Thermal barrier |
| ⑦ Steel frame | |

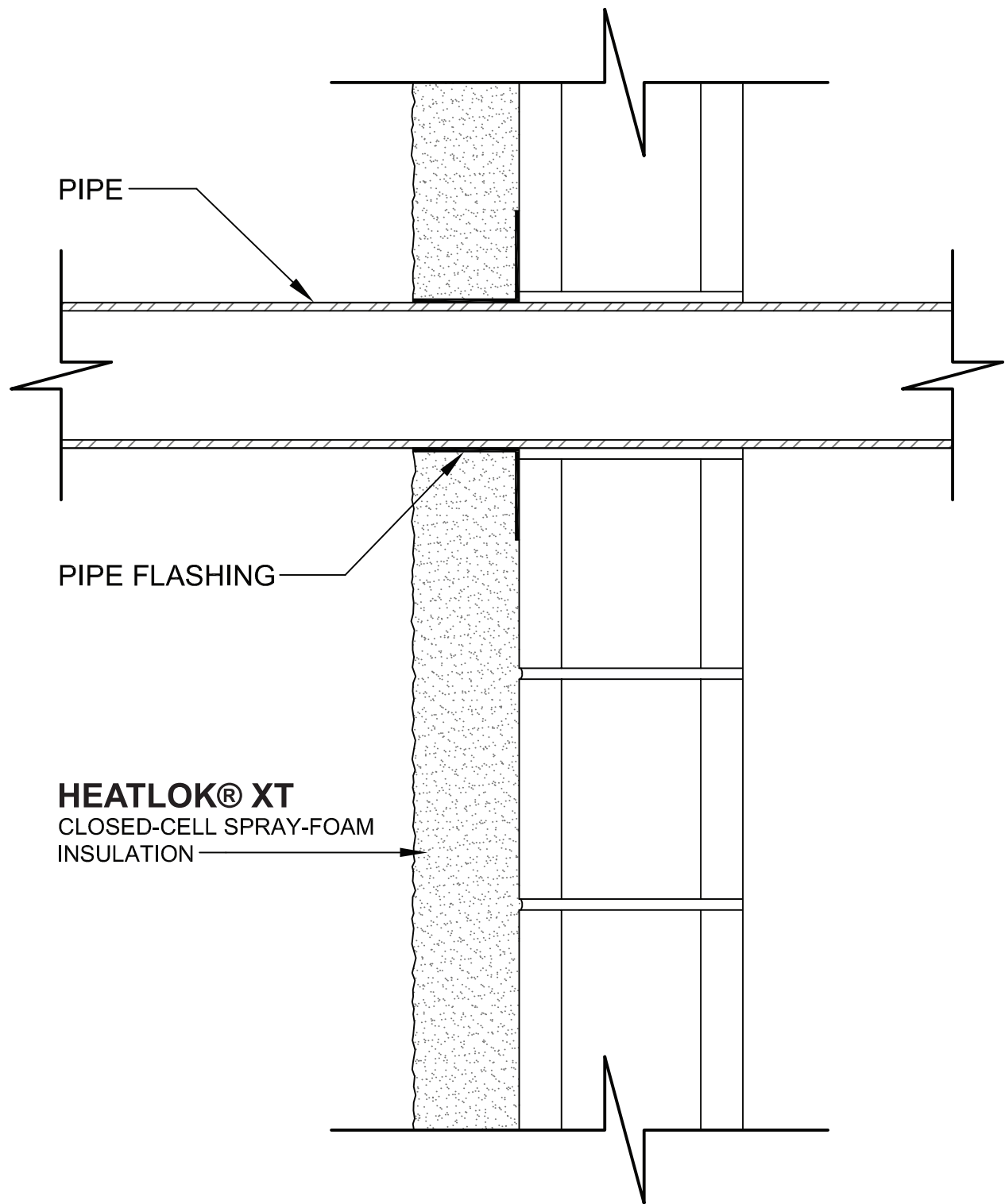


ISOMETRIC VIEW

DATE: 3/18/16

SCALE: NTS



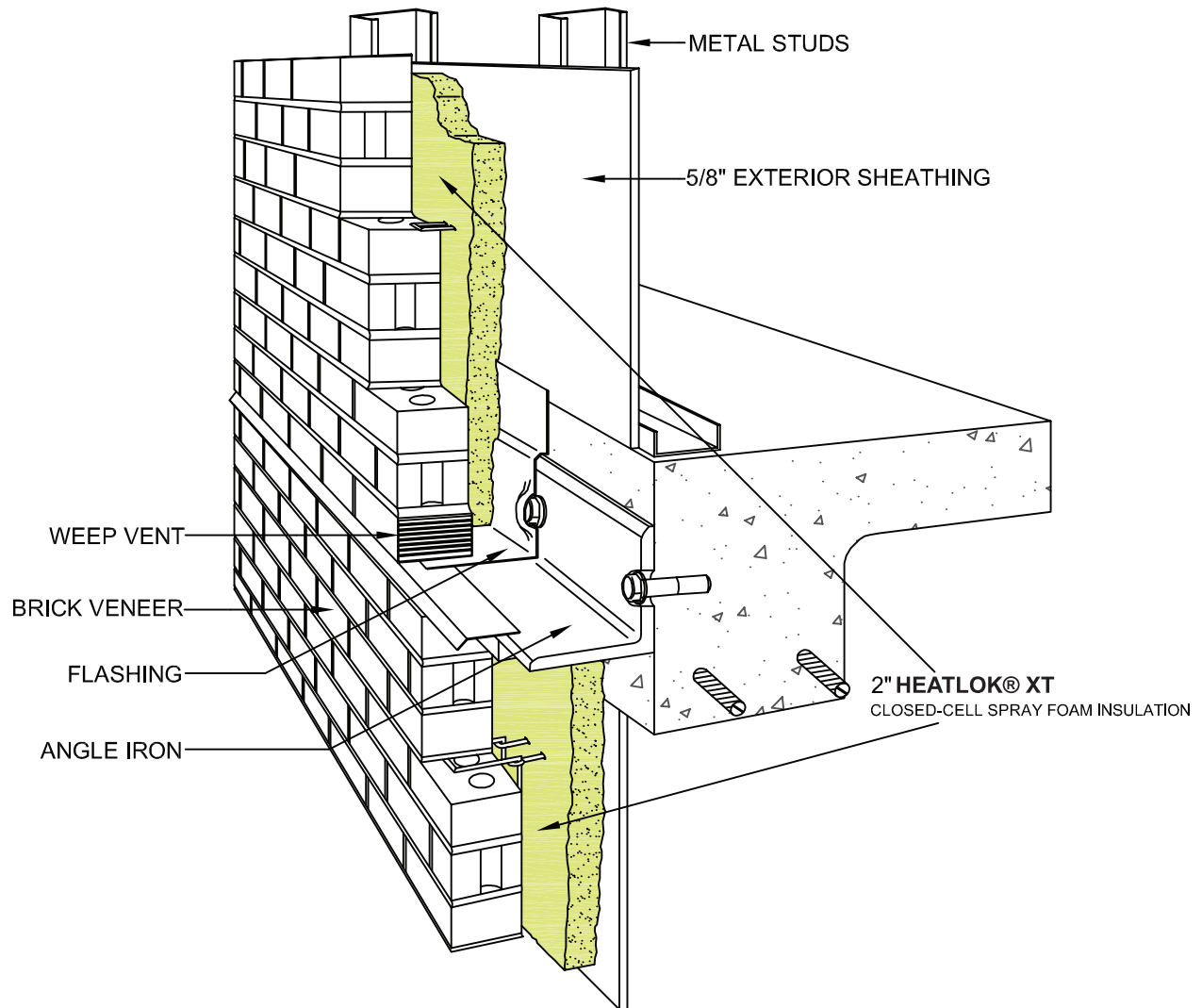


SECTION VIEW

DATE: 3/18/16

SCALE: NTS





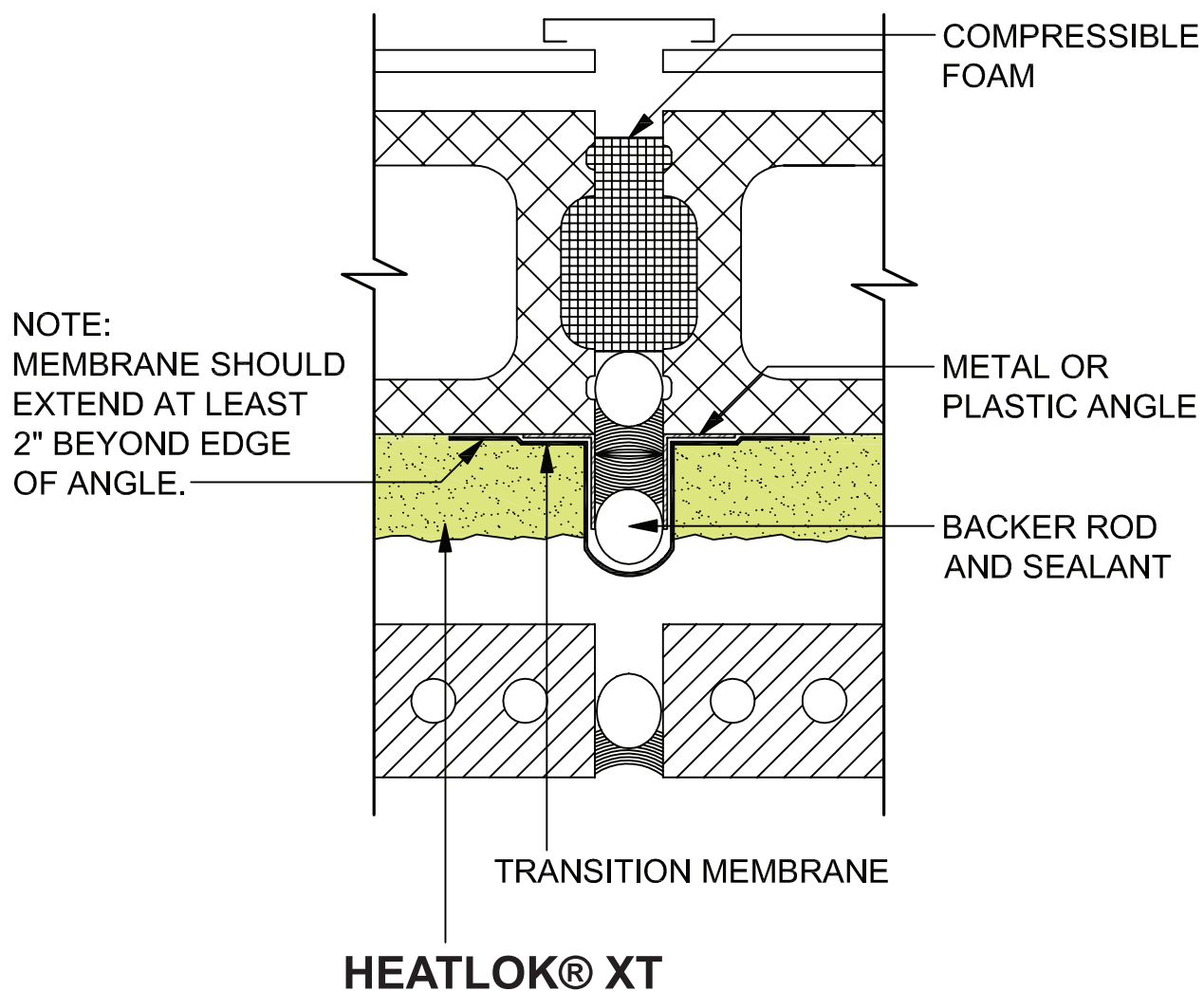
ISOMETRIC VIEW

DATE: 3/18/16

SCALE: NTS



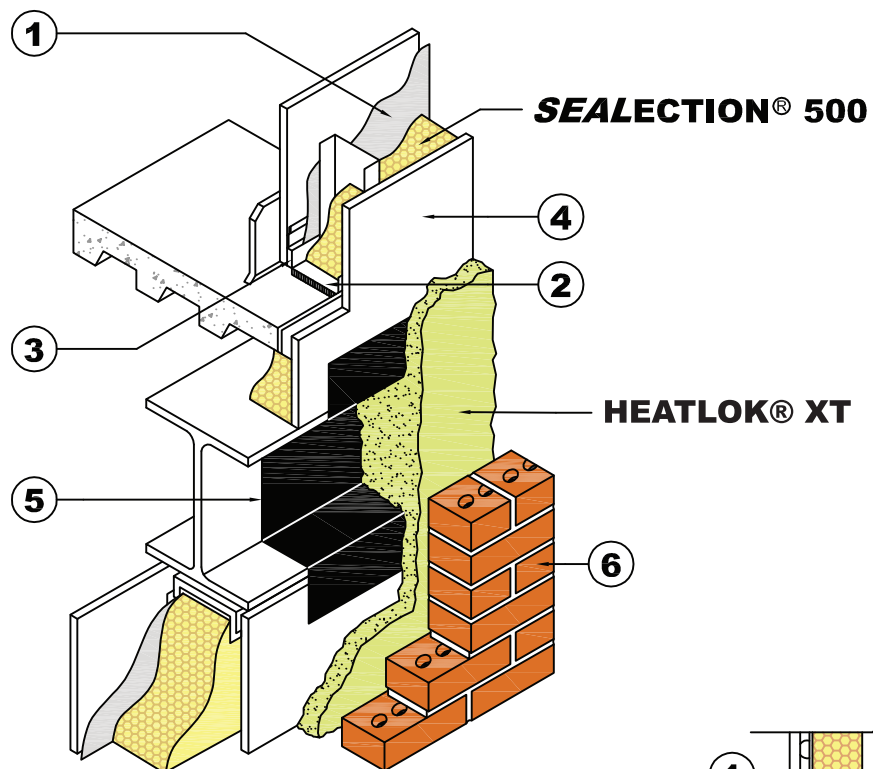
EXPANSION JOINT



SECTION VIEW

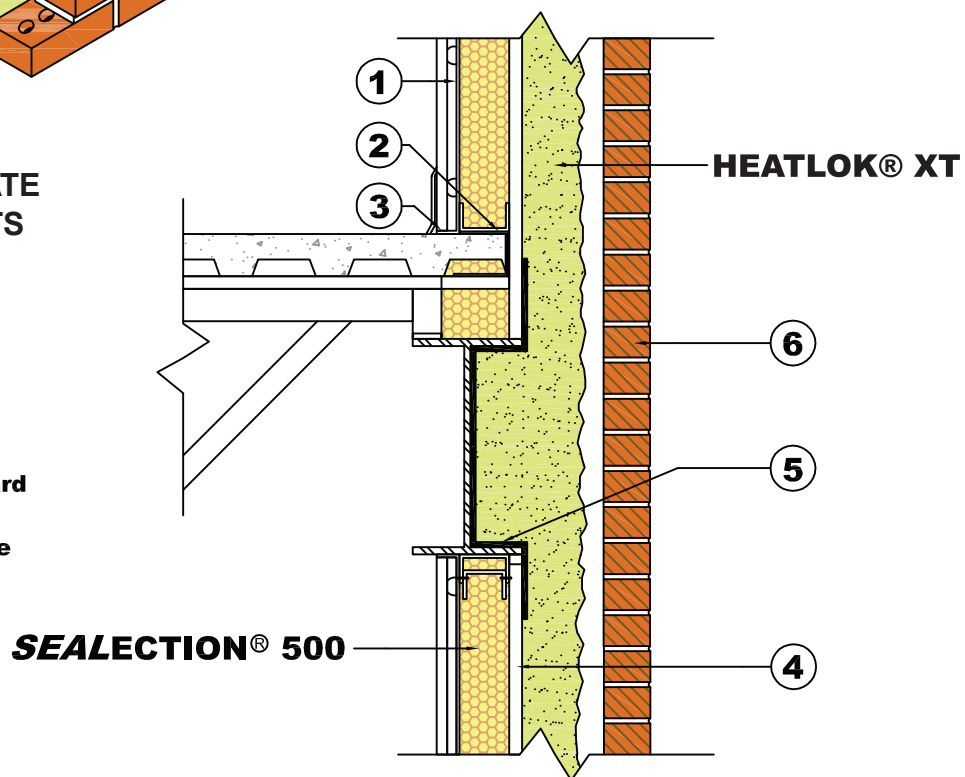
DATE: 3/18/16

SCALE: NTS



CHANGE IN SUBSTRATE & SUBSTRATE JOINTS

- ① Vapor barrier
- ② Plate cushion
- ③ Caulking
- ④ Exterior gypsum board
- ⑤ Transition membrane
- ⑥ Brick



ISOMETRIC VIEW

DATE: 3/18/16

SCALE: NTS

