

SHEET: **AB-1**

SCALE: NTS

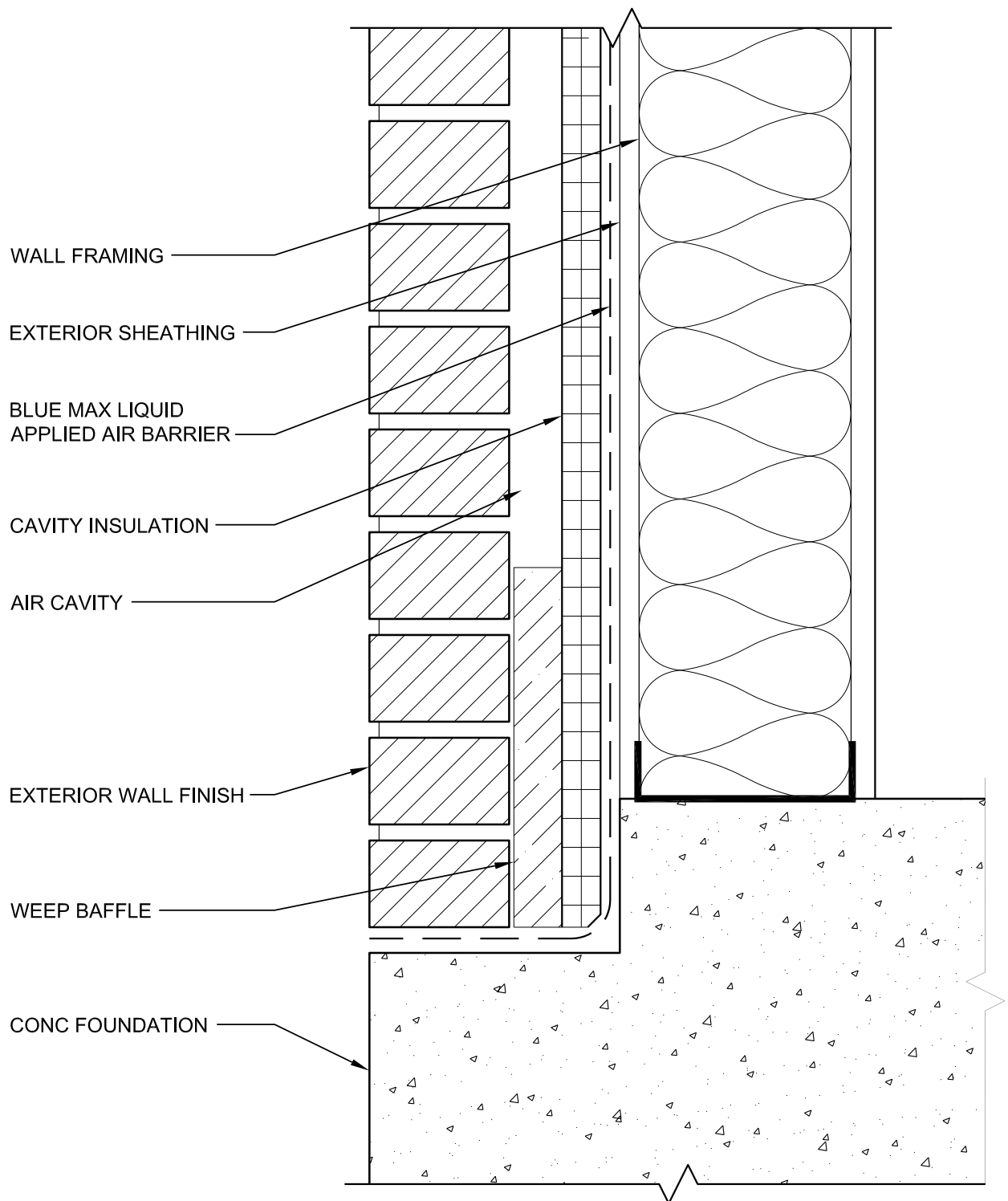
DATE: 04/30/2020

DETAIL: ROOF/WALL & DEFLECTION DETAIL



Blue Max Air Barrier  
Ames Research Laboratories, Inc.  
1891 16th St SE  
Salem, OR USA 97302-1436  
[www.AmesResearch.com](http://www.AmesResearch.com)

AS A MANUFACTURER OF CONSTRUCTION PRODUCTS, AMES RESEARCH LABORATORIES INC. PROVIDES GENERIC DETAILS AS A GENERAL GUIDE FOR INFORMATION PURPOSES ONLY AND THESE DETAILS ARE NOT FOR CONSTRUCTION. THESE DETAILS ARE NOT INTENDED TO REPLACE SOUND ENGINEERING AND ARCHITECTURAL PRACTICES AND SHOULD NOT BE RELIED UPON FOR THAT PURPOSE. AMES RESEARCH ASSUMES NO LIABILITY WITH RESPECT TO THE DESIGN OF THE SYSTEM. THE ARCHITECT, CONSULTANT, AND/OR ENGINEER OR DESIGN PROFESSIONAL FOR A PARTICULAR PROJECT BEARS THE SOLE RESPONSIBILITY FOR THE DESIGN OF THE SYSTEM, FOR THE PREPARATION AND APPROVAL OF THE PROJECT SPECIFICATIONS, DETAILS AND SHOP DRAWINGS, AND FOR DETERMINING THEIR SUITABILITY FOR A PARTICULAR PROJECT OR APPLICATION. WHILE AMES RESEARCH PROVIDES GENERAL INSTRUCTIONS FOR THE INSTALLATION OF ITS MATERIALS, THE MEANS AND METHODS USED BY THE CONTRACTOR FOR MATERIAL STORAGE, SUBSTRATE EVALUATION, SURFACE PREPARATION AND THE INSTALLATION OF BOTH AMES AND NON-AMES MATERIALS ARE THE RESPONSIBILITY OF THE CONTRACTOR. THE CONTRACTOR MUST ALWAYS READ AND FOLLOW THE WARNINGS AND INSTRUCTIONS ON AMES PRODUCT LABELS, TECHNICAL DATA SHEETS, AND MATERIAL SAFETY DATA SHEETS AVAILABLE AT [WWW.AMESRESEARCH.COM](http://WWW.AMESRESEARCH.COM). AMES RESEARCH MAKES NO WARRANTY OF ANY KIND, EITHER EXPRESS OR IMPLIED, AS TO THE CONTENT OF THIS GUIDE DETAIL. AMES SHALL NOT BE RESPONSIBLE UNDER ANY LEGAL THEORY TO ANY THIRD PARTY FOR ANY DIRECT OR CONSEQUENTIAL DAMAGES OF ANY KIND ARISING FROM THE USE OF THIS GUIDE DETAIL. ALL PRODUCTS AND SERVICES PROVIDED BY AMES RESEARCH ARE SUBJECT TO ITS TERMS AND CONDITIONS OF SALE AVAILABLE AT [WWW.AMESRESEARCH.COM](http://WWW.AMESRESEARCH.COM)



SHEET: **AB-2**

SCALE: NTS

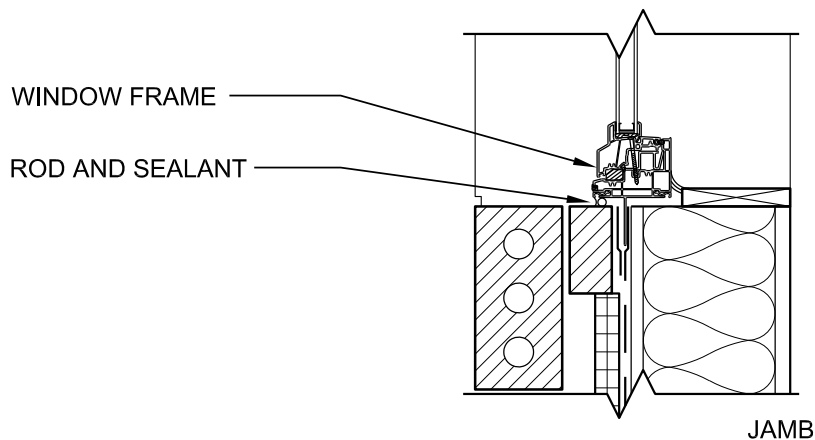
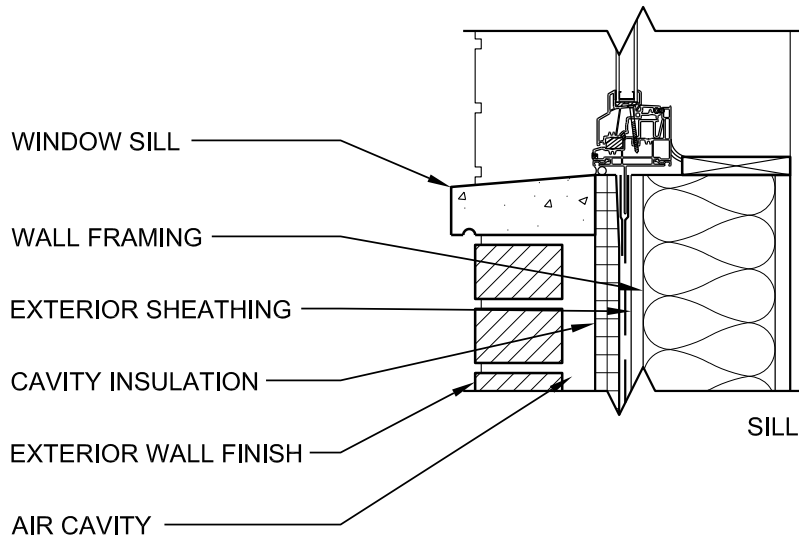
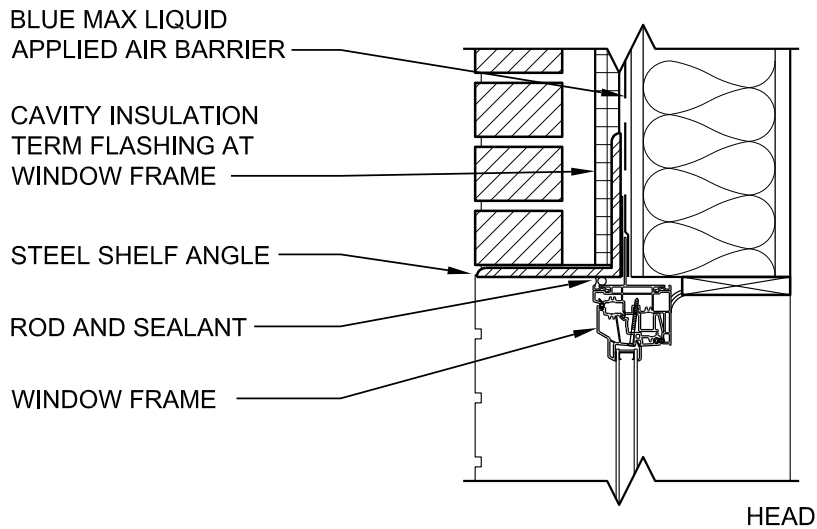
DATE: 04/30/2020

DETAIL: WALL/FOUNDATION DETAIL



Blue Max Air Barrier  
 Ames Research Laboratories, Inc.  
 1891 16th St SE  
 Salem, OR USA 97302-1436  
[www.AmesResearch.com](http://www.AmesResearch.com)

AS A MANUFACTURER OF CONSTRUCTION PRODUCTS, AMES RESEARCH LABORATORIES INC. PROVIDES GENERIC DETAILS AS A GENERAL GUIDE FOR INFORMATION PURPOSES ONLY AND THESE DETAILS ARE NOT FOR CONSTRUCTION. THESE DETAILS ARE NOT INTENDED TO REPLACE SOUND ENGINEERING AND ARCHITECTURAL PRACTICES AND SHOULD NOT BE RELIED UPON FOR THAT PURPOSE. AMES RESEARCH ASSUMES NO LIABILITY WITH RESPECT TO THE DESIGN OF THE SYSTEM. THE ARCHITECT, CONSULTANT, AND/OR ENGINEER OR DESIGN PROFESSIONAL FOR A PARTICULAR PROJECT BEARS THE SOLE RESPONSIBILITY FOR THE DESIGN OF THE SYSTEM, FOR THE PREPARATION AND APPROVAL OF THE PROJECT SPECIFICATIONS, DETAILS AND SHOP DRAWINGS, AND FOR DETERMINING THEIR SUITABILITY FOR A PARTICULAR PROJECT OR APPLICATION. WHILE AMES RESEARCH PROVIDES GENERAL INSTRUCTIONS FOR THE INSTALLATION OF ITS MATERIALS, THE MEANS AND METHODS USED BY THE CONTRACTOR FOR MATERIAL STORAGE, SUBSTRATE EVALUATION, SURFACE PREPARATION AND THE INSTALLATION OF BOTH AMES AND NON-AMES MATERIALS ARE THE RESPONSIBILITY OF THE CONTRACTOR. THE CONTRACTOR MUST ALWAYS READ AND FOLLOW THE WARNINGS AND INSTRUCTIONS ON AMES PRODUCT LABELS, TECHNICAL DATA SHEETS, AND MATERIAL SAFETY DATA SHEETS AVAILABLE AT [WWW.AMESRESEARCH.COM](http://WWW.AMESRESEARCH.COM). **AMES RESEARCH MAKES NO WARRANTY OF ANY KIND, EITHER EXPRESS OR IMPLIED, AS TO THE CONTENT OF THIS GUIDE DETAIL. AMES SHALL NOT BE RESPONSIBLE UNDER ANY LEGAL THEORY TO ANY THIRD PARTY FOR ANY DIRECT OR CONSEQUENTIAL DAMAGES OF ANY KIND ARISING FROM THE USE OF THIS GUIDE DETAIL. ALL PRODUCTS AND SERVICES PROVIDED BY AMES RESEARCH ARE SUBJECT TO ITS TERMS AND CONDITIONS OF SALE AVAILABLE AT [WWW.AMESRESEARCH.COM](http://WWW.AMESRESEARCH.COM)**



SHEET: **AB-3**

SCALE: NTS

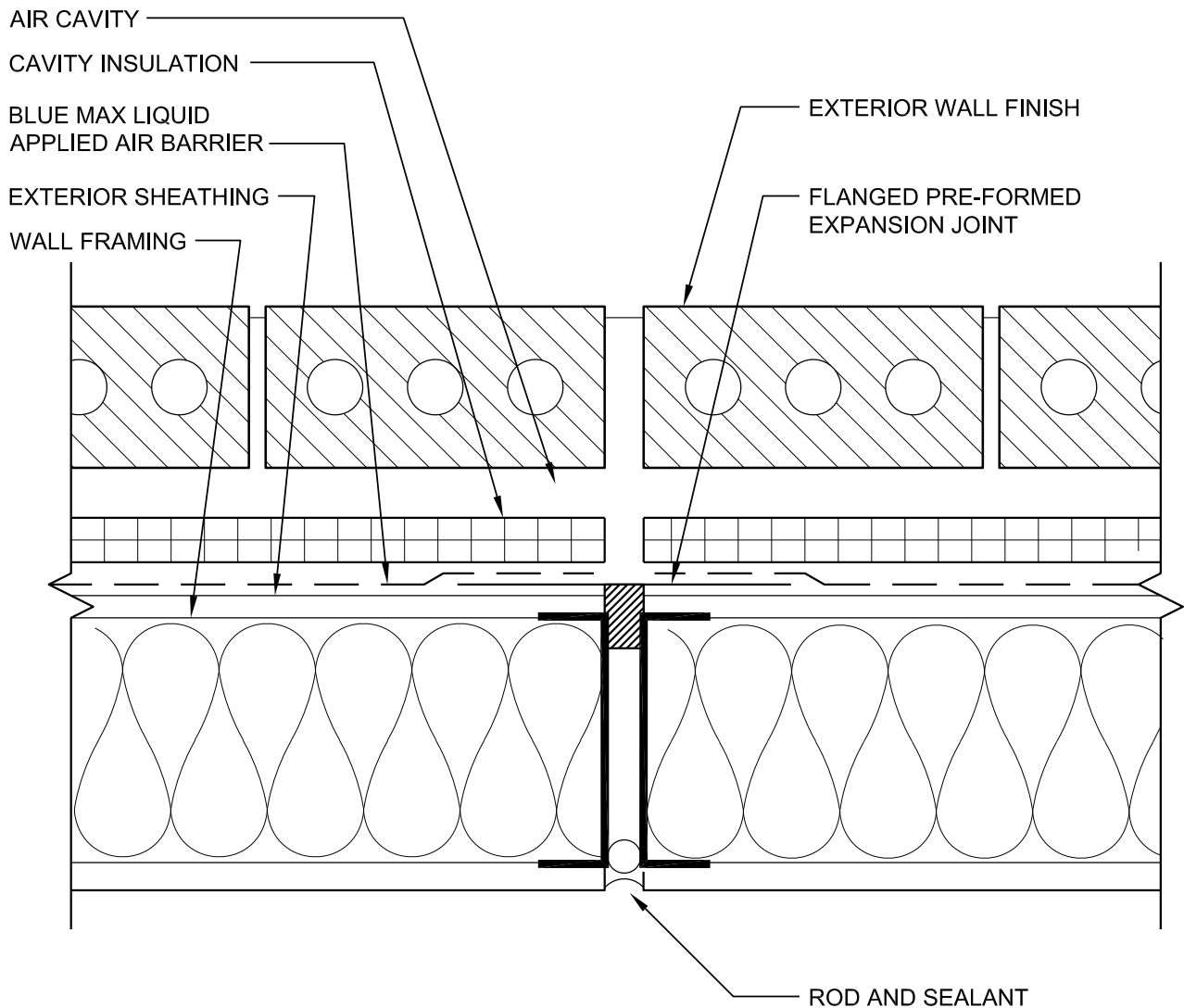
DATE: 04/30/2020

DETAIL: WINDOW/WALL DETAIL



Blue Max Air Barrier  
Ames Research Laboratories, Inc.  
1891 16th St SE  
Salem, OR USA 97302-1436  
[www.AmesResearch.com](http://www.AmesResearch.com)

AS A MANUFACTURER OF CONSTRUCTION PRODUCTS, AMES RESEARCH LABORATORIES INC. PROVIDES GENERIC DETAILS AS A GENERAL GUIDE FOR INFORMATION PURPOSES ONLY AND THESE DETAILS ARE NOT FOR CONSTRUCTION. THESE DETAILS ARE NOT INTENDED TO REPLACE SOUND ENGINEERING AND ARCHITECTURAL PRACTICES AND SHOULD NOT BE RELIED UPON FOR THAT PURPOSE. AMES RESEARCH ASSUMES NO LIABILITY WITH RESPECT TO THE DESIGN OF THE SYSTEM. THE ARCHITECT, CONSULTANT, AND/OR ENGINEER OR DESIGN PROFESSIONAL FOR A PARTICULAR PROJECT BEARS THE SOLE RESPONSIBILITY FOR THE DESIGN OF THE SYSTEM, FOR THE PREPARATION AND APPROVAL OF THE PROJECT SPECIFICATIONS, DETAILS AND SHOP DRAWINGS, AND FOR DETERMINING THEIR SUITABILITY FOR A PARTICULAR PROJECT OR APPLICATION. WHILE AMES RESEARCH PROVIDES GENERAL INSTRUCTIONS FOR THE INSTALLATION OF ITS MATERIALS, THE MEANS AND METHODS USED BY THE CONTRACTOR FOR MATERIAL STORAGE, SUBSTRATE EVALUATION, SURFACE PREPARATION AND THE INSTALLATION OF BOTH AMES AND NON-AMES MATERIALS ARE THE RESPONSIBILITY OF THE CONTRACTOR. THE CONTRACTOR MUST ALWAYS READ AND FOLLOW THE WARNINGS AND INSTRUCTIONS ON AMES PRODUCT LABELS, TECHNICAL DATA SHEETS, AND MATERIAL SAFETY DATA SHEETS AVAILABLE AT [WWW.AMESRESEARCH.COM](http://WWW.AMESRESEARCH.COM). AMES RESEARCH MAKES NO WARRANTY OF ANY KIND, EITHER EXPRESS OR IMPLIED, AS TO THE CONTENT OF THIS GUIDE DETAIL. AMES SHALL NOT BE RESPONSIBLE UNDER ANY LEGAL THEORY TO ANY THIRD PARTY FOR ANY DIRECT OR CONSEQUENTIAL DAMAGES OF ANY KIND ARISING FROM THE USE OF THIS GUIDE DETAIL. ALL PRODUCTS AND SERVICES PROVIDED BY AMES RESEARCH ARE SUBJECT TO ITS TERMS AND CONDITIONS OF SALE AVAILABLE AT [WWW.AMESRESEARCH.COM](http://WWW.AMESRESEARCH.COM)



SHEET: **AB-4**

SCALE: NTS

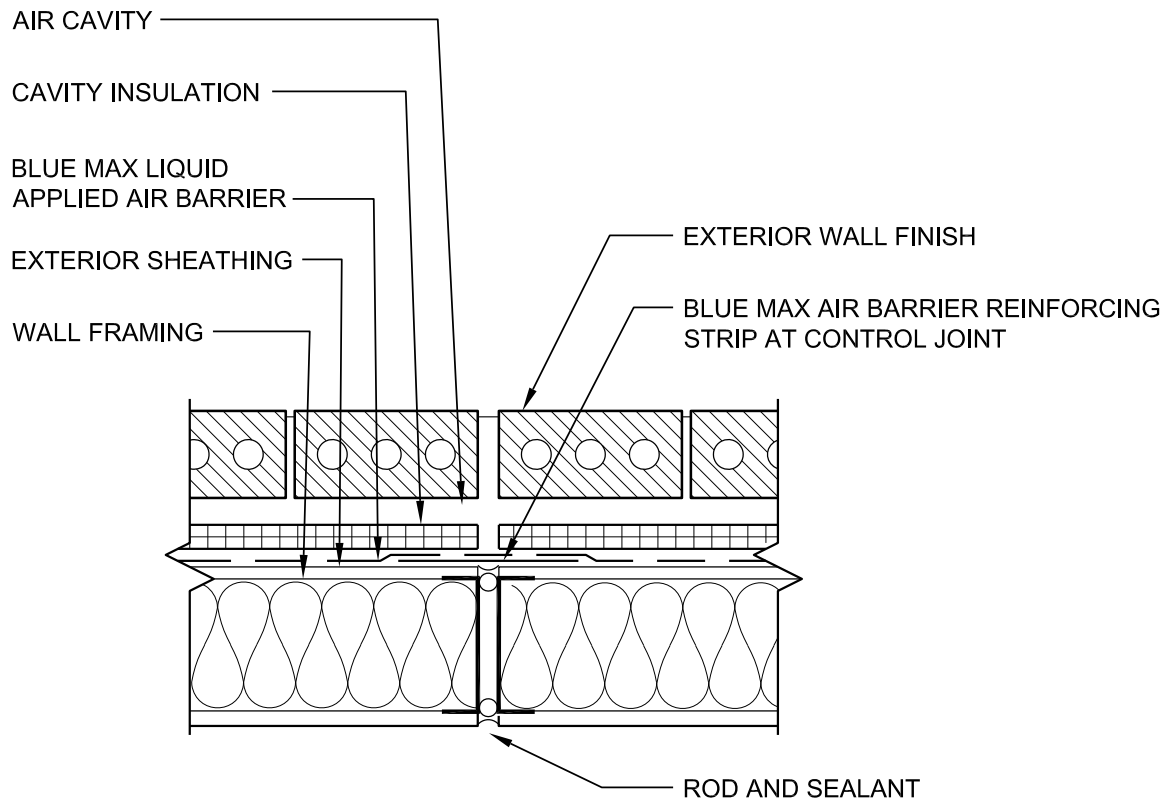
DATE: 04/30/2020

DETAIL: EXPANSION JOINT DETAILS

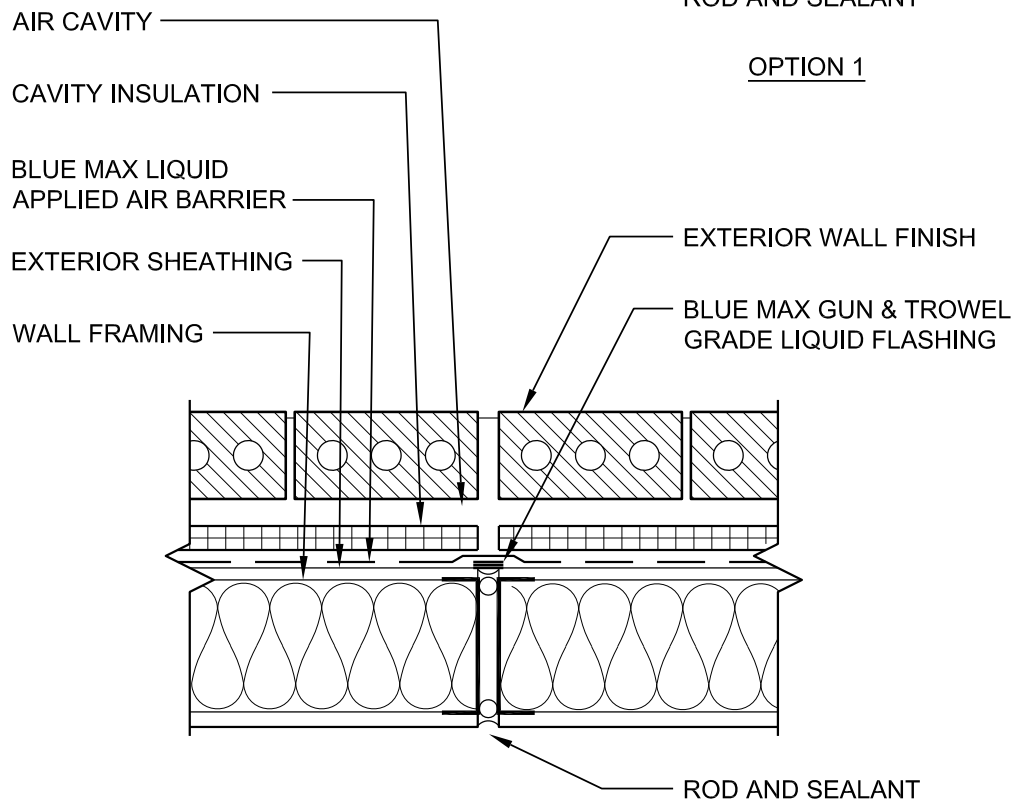


Blue Max Air Barrier  
Ames Research Laboratories, Inc.  
1891 16th St SE  
Salem, OR USA 97302-1436  
[www.AmesResearch.com](http://www.AmesResearch.com)

AS A MANUFACTURER OF CONSTRUCTION PRODUCTS, AMES RESEARCH LABORATORIES INC. PROVIDES GENERIC DETAILS AS A GENERAL GUIDE FOR INFORMATION PURPOSES ONLY AND THESE DETAILS ARE NOT FOR CONSTRUCTION. THESE DETAILS ARE NOT INTENDED TO REPLACE SOUND ENGINEERING AND ARCHITECTURAL PRACTICES AND SHOULD NOT BE RELIED UPON FOR THAT PURPOSE. AMES RESEARCH ASSUMES NO LIABILITY WITH RESPECT TO THE DESIGN OF THE SYSTEM. THE ARCHITECT, CONSULTANT, AND/OR ENGINEER OR DESIGN PROFESSIONAL FOR A PARTICULAR PROJECT BEARS THE SOLE RESPONSIBILITY FOR THE DESIGN OF THE SYSTEM, FOR THE PREPARATION AND APPROVAL OF THE PROJECT SPECIFICATIONS, DETAILS AND SHOP DRAWINGS, AND FOR DETERMINING THEIR SUITABILITY FOR A PARTICULAR PROJECT OR APPLICATION. WHILE AMES RESEARCH PROVIDES GENERAL INSTRUCTIONS FOR THE INSTALLATION OF ITS MATERIALS, THE MEANS AND METHODS USED BY THE CONTRACTOR FOR MATERIAL STORAGE, SUBSTRATE EVALUATION, SURFACE PREPARATION AND THE INSTALLATION OF BOTH AMES AND NON-AMES MATERIALS ARE THE RESPONSIBILITY OF THE CONTRACTOR. THE CONTRACTOR MUST ALWAYS READ AND FOLLOW THE WARNINGS AND INSTRUCTIONS ON AMES PRODUCT LABELS, TECHNICAL DATA SHEETS, AND MATERIAL SAFETY DATA SHEETS AVAILABLE AT [WWW.AMESRESEARCH.COM](http://WWW.AMESRESEARCH.COM). AMES RESEARCH MAKES NO WARRANTY OF ANY KIND, EITHER EXPRESS OR IMPLIED, AS TO THE CONTENT OF THIS GUIDE DETAIL. AMES SHALL NOT BE RESPONSIBLE UNDER ANY LEGAL THEORY TO ANY THIRD PARTY FOR ANY DIRECT OR CONSEQUENTIAL DAMAGES OF ANY KIND ARISING FROM THE USE OF THIS GUIDE DETAIL. ALL PRODUCTS AND SERVICES PROVIDED BY AMES RESEARCH ARE SUBJECT TO ITS TERMS AND CONDITIONS OF SALE AVAILABLE AT [WWW.AMESRESEARCH.COM](http://WWW.AMESRESEARCH.COM)



OPTION 1



OPTION 2

SHEET: **AB-5**

SCALE: NTS

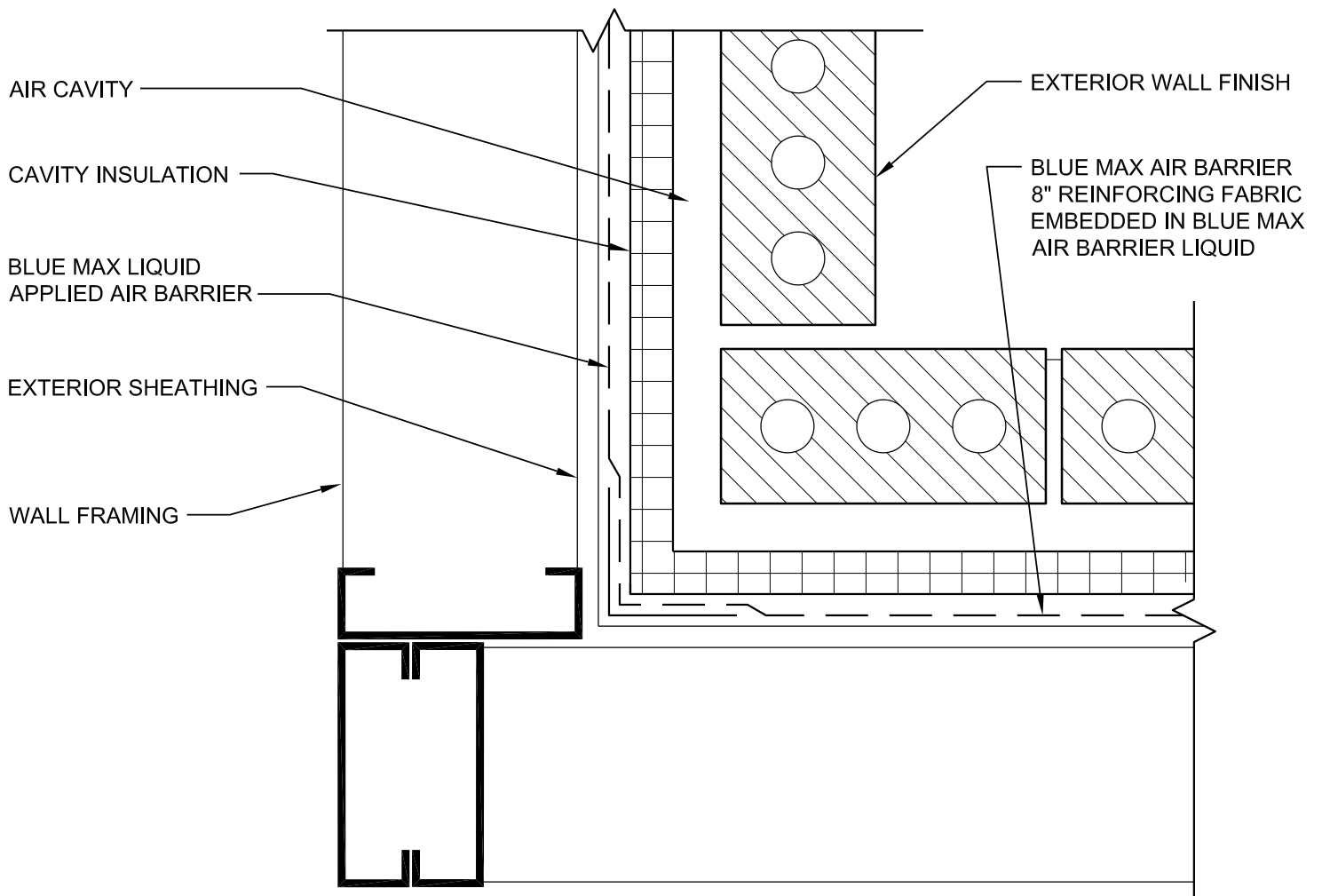
DATE: 04/30/2020

DETAIL: CONTROL JOINT DETAILS



Blue Max Air Barrier  
Ames Research Laboratories, Inc.  
1891 16th St SE  
Salem, OR USA 97302-1436  
[www.AmesResearch.com](http://www.AmesResearch.com)

AS A MANUFACTURER OF CONSTRUCTION PRODUCTS, AMES RESEARCH LABORATORIES INC. PROVIDES GENERIC DETAILS AS A GENERAL GUIDE FOR INFORMATION PURPOSES ONLY AND THESE DETAILS ARE NOT FOR CONSTRUCTION. THESE DETAILS ARE NOT INTENDED TO REPLACE SOUND ENGINEERING AND ARCHITECTURAL PRACTICES AND SHOULD NOT BE RELIED UPON FOR THAT PURPOSE. AMES RESEARCH ASSUMES NO LIABILITY WITH RESPECT TO THE DESIGN OF THE SYSTEM. THE ARCHITECT, CONSULTANT, AND/OR ENGINEER OR DESIGN PROFESSIONAL FOR A PARTICULAR PROJECT BEARS THE SOLE RESPONSIBILITY FOR THE DESIGN OF THE SYSTEM, FOR THE PREPARATION AND APPROVAL OF THE PROJECT SPECIFICATIONS, DETAILS AND SHOP DRAWINGS, AND FOR DETERMINING THEIR SUITABILITY FOR A PARTICULAR PROJECT OR APPLICATION. WHILE AMES RESEARCH PROVIDES GENERAL INSTRUCTIONS FOR THE INSTALLATION OF ITS MATERIALS, THE MEANS AND METHODS USED BY THE CONTRACTOR FOR MATERIAL STORAGE, SUBSTRATE EVALUATION, SURFACE PREPARATION AND THE INSTALLATION OF BOTH AMES AND NON-AMES MATERIALS ARE THE RESPONSIBILITY OF THE CONTRACTOR. THE CONTRACTOR MUST ALWAYS READ AND FOLLOW THE WARNINGS AND INSTRUCTIONS ON AMES PRODUCT LABELS, TECHNICAL DATA SHEETS, AND MATERIAL SAFETY DATA SHEETS AVAILABLE AT [WWW.AMESRESEARCH.COM](http://WWW.AMESRESEARCH.COM). AMES RESEARCH MAKES NO WARRANTY OF ANY KIND, EITHER EXPRESS OR IMPLIED, AS TO THE CONTENT OF THIS GUIDE DETAIL. AMES SHALL NOT BE RESPONSIBLE UNDER ANY LEGAL THEORY TO ANY THIRD PARTY FOR ANY DIRECT OR CONSEQUENTIAL DAMAGES OF ANY KIND ARISING FROM THE USE OF THIS GUIDE DETAIL. ALL PRODUCTS AND SERVICES PROVIDED BY AMES RESEARCH ARE SUBJECT TO ITS TERMS AND CONDITIONS OF SALE AVAILABLE AT [WWW.AMESRESEARCH.COM](http://WWW.AMESRESEARCH.COM)



SHEET: **AB-6**

SCALE: NTS

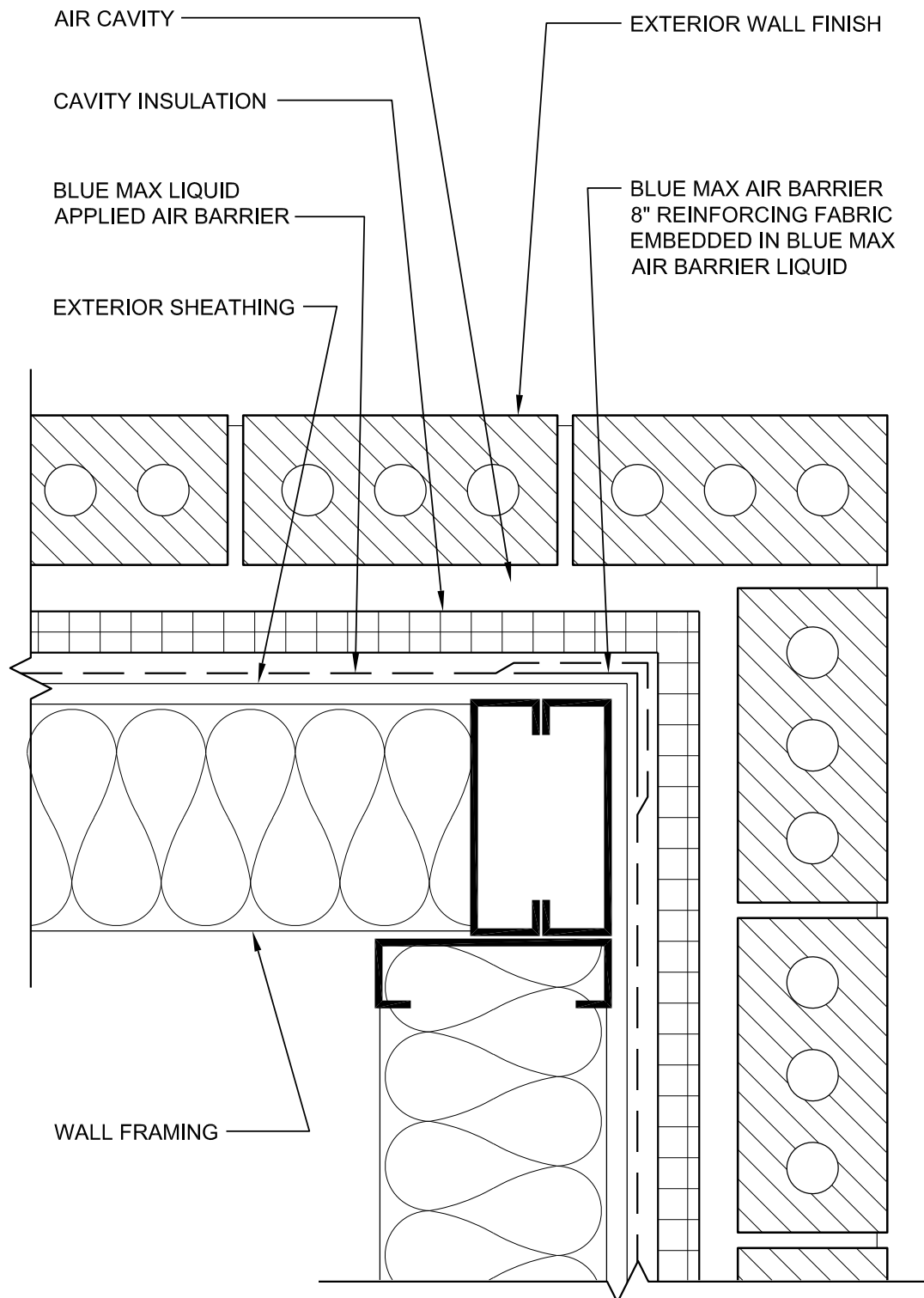
DATE: 04/30/2020

DETAIL: INSIDE CORNER DETAIL



Blue Max Air Barrier  
 Ames Research Laboratories, Inc.  
 1891 16th St SE  
 Salem, OR USA 97302-1436  
[www.AmesResearch.com](http://www.AmesResearch.com)

AS A MANUFACTURER OF CONSTRUCTION PRODUCTS, AMES RESEARCH LABORATORIES INC. PROVIDES GENERIC DETAILS AS A GENERAL GUIDE FOR INFORMATION PURPOSES ONLY AND THESE DETAILS ARE NOT FOR CONSTRUCTION. THESE DETAILS ARE NOT INTENDED TO REPLACE SOUND ENGINEERING AND ARCHITECTURAL PRACTICES AND SHOULD NOT BE RELIED UPON FOR THAT PURPOSE. AMES RESEARCH ASSUMES NO LIABILITY WITH RESPECT TO THE DESIGN OF THE SYSTEM. THE ARCHITECT, CONSULTANT, AND/OR ENGINEER OR DESIGN PROFESSIONAL FOR A PARTICULAR PROJECT BEARS THE SOLE RESPONSIBILITY FOR THE DESIGN OF THE SYSTEM, FOR THE PREPARATION AND APPROVAL OF THE PROJECT SPECIFICATIONS, DETAILS AND SHOP DRAWINGS, AND FOR DETERMINING THEIR SUITABILITY FOR A PARTICULAR PROJECT OR APPLICATION. WHILE AMES RESEARCH PROVIDES GENERAL INSTRUCTIONS FOR THE INSTALLATION OF ITS MATERIALS, THE MEANS AND METHODS USED BY THE CONTRACTOR FOR MATERIAL STORAGE, SUBSTRATE EVALUATION, SURFACE PREPARATION AND THE INSTALLATION OF BOTH AMES AND NON-AMES MATERIALS ARE THE RESPONSIBILITY OF THE CONTRACTOR. THE CONTRACTOR MUST ALWAYS READ AND FOLLOW THE WARNINGS AND INSTRUCTIONS ON AMES PRODUCT LABELS, TECHNICAL DATA SHEETS, AND MATERIAL SAFETY DATA SHEETS AVAILABLE AT [WWW.AMESRESEARCH.COM](http://WWW.AMESRESEARCH.COM). AMES RESEARCH MAKES NO WARRANTY OF ANY KIND, EITHER EXPRESS OR IMPLIED, AS TO THE CONTENT OF THIS GUIDE DETAIL. AMES SHALL NOT BE RESPONSIBLE UNDER ANY LEGAL THEORY TO ANY THIRD PARTY FOR ANY DIRECT OR CONSEQUENTIAL DAMAGES OF ANY KIND ARISING FROM THE USE OF THIS GUIDE DETAIL. ALL PRODUCTS AND SERVICES PROVIDED BY AMES RESEARCH ARE SUBJECT TO ITS TERMS AND CONDITIONS OF SALE AVAILABLE AT [WWW.AMESRESEARCH.COM](http://WWW.AMESRESEARCH.COM)



SHEET: **AB-7**

SCALE: NTS

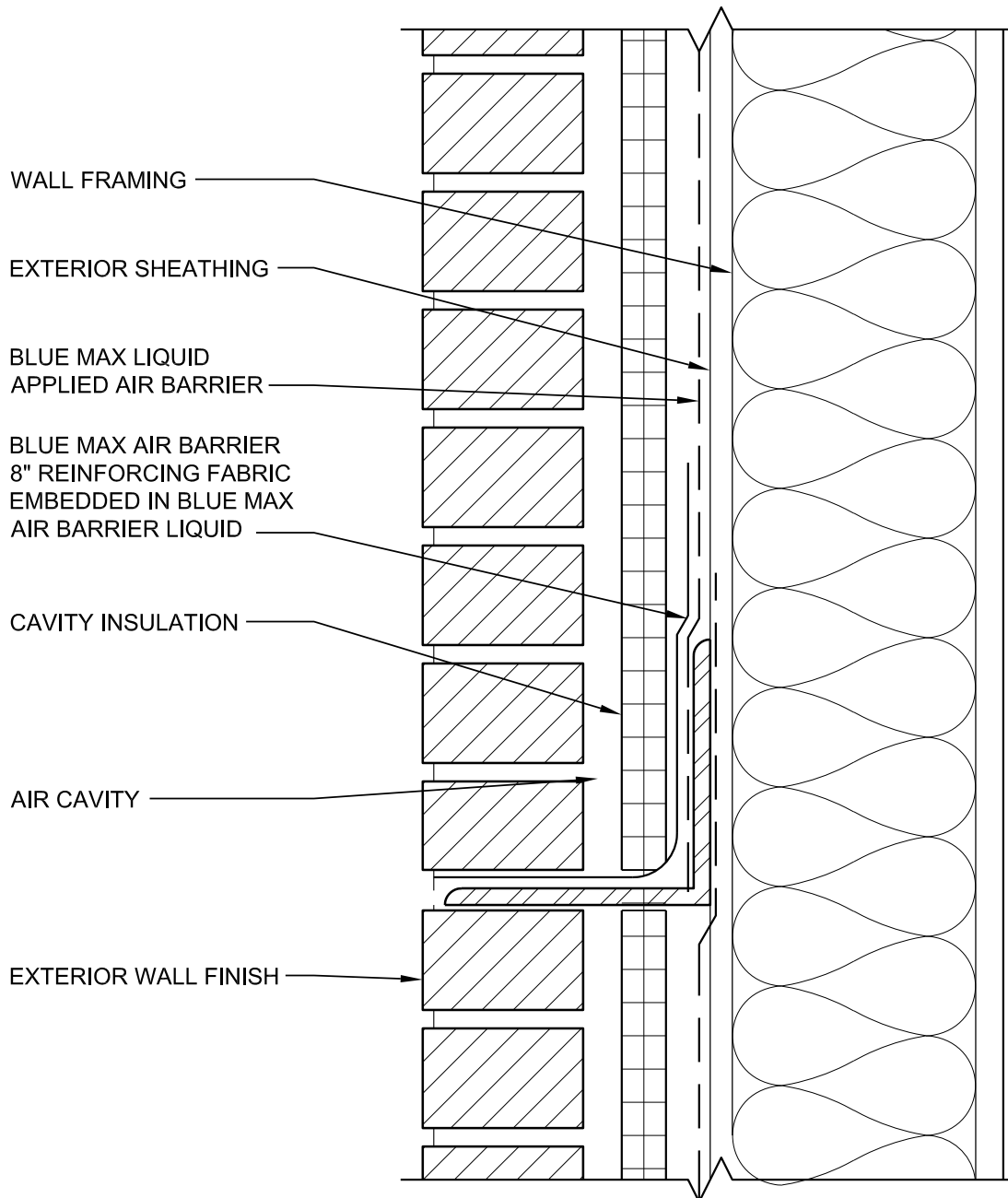
DATE: 04/30/2020

DETAIL: OUTSIDE CORNER DETAIL



Blue Max Air Barrier  
 Ames Research Laboratories, Inc.  
 1891 16th St SE  
 Salem, OR USA 97302-1436  
[www.AmesResearch.com](http://www.AmesResearch.com)

AS A MANUFACTURER OF CONSTRUCTION PRODUCTS, AMES RESEARCH LABORATORIES INC. PROVIDES GENERIC DETAILS AS A GENERAL GUIDE FOR INFORMATION PURPOSES ONLY AND THESE DETAILS ARE NOT FOR CONSTRUCTION. THESE DETAILS ARE NOT INTENDED TO REPLACE SOUND ENGINEERING AND ARCHITECTURAL PRACTICES AND SHOULD NOT BE RELIED UPON FOR THAT PURPOSE. AMES RESEARCH ASSUMES NO LIABILITY WITH RESPECT TO THE DESIGN OF THE SYSTEM. THE ARCHITECT, CONSULTANT, AND/OR ENGINEER OR DESIGN PROFESSIONAL FOR A PARTICULAR PROJECT BEARS THE SOLE RESPONSIBILITY FOR THE DESIGN OF THE SYSTEM, FOR THE PREPARATION AND APPROVAL OF THE PROJECT SPECIFICATIONS, DETAILS AND SHOP DRAWINGS, AND FOR DETERMINING THEIR SUITABILITY FOR A PARTICULAR PROJECT OR APPLICATION. WHILE AMES RESEARCH PROVIDES GENERAL INSTRUCTIONS FOR THE INSTALLATION OF ITS MATERIALS, THE MEANS AND METHODS USED BY THE CONTRACTOR FOR MATERIAL STORAGE, SUBSTRATE EVALUATION, SURFACE PREPARATION AND THE INSTALLATION OF BOTH AMES AND NON-AMES MATERIALS ARE THE RESPONSIBILITY OF THE CONTRACTOR. THE CONTRACTOR MUST ALWAYS READ AND FOLLOW THE WARNINGS AND INSTRUCTIONS ON AMES PRODUCT LABELS, TECHNICAL DATA SHEETS, AND MATERIAL SAFETY DATA SHEETS AVAILABLE AT [WWW.AMESRESEARCH.COM](http://WWW.AMESRESEARCH.COM). AMES RESEARCH MAKES NO WARRANTY OF ANY KIND, EITHER EXPRESS OR IMPLIED, AS TO THE CONTENT OF THIS GUIDE DETAIL. AMES SHALL NOT BE RESPONSIBLE UNDER ANY LEGAL THEORY TO ANY THIRD PARTY FOR ANY DIRECT OR CONSEQUENTIAL DAMAGES OF ANY KIND ARISING FROM THE USE OF THIS GUIDE DETAIL. ALL PRODUCTS AND SERVICES PROVIDED BY AMES RESEARCH ARE SUBJECT TO ITS TERMS AND CONDITIONS OF SALE AVAILABLE AT [WWW.AMESRESEARCH.COM](http://WWW.AMESRESEARCH.COM)



SHEET: **AB-8**

SCALE: NTS

DATE: 04/30/2020

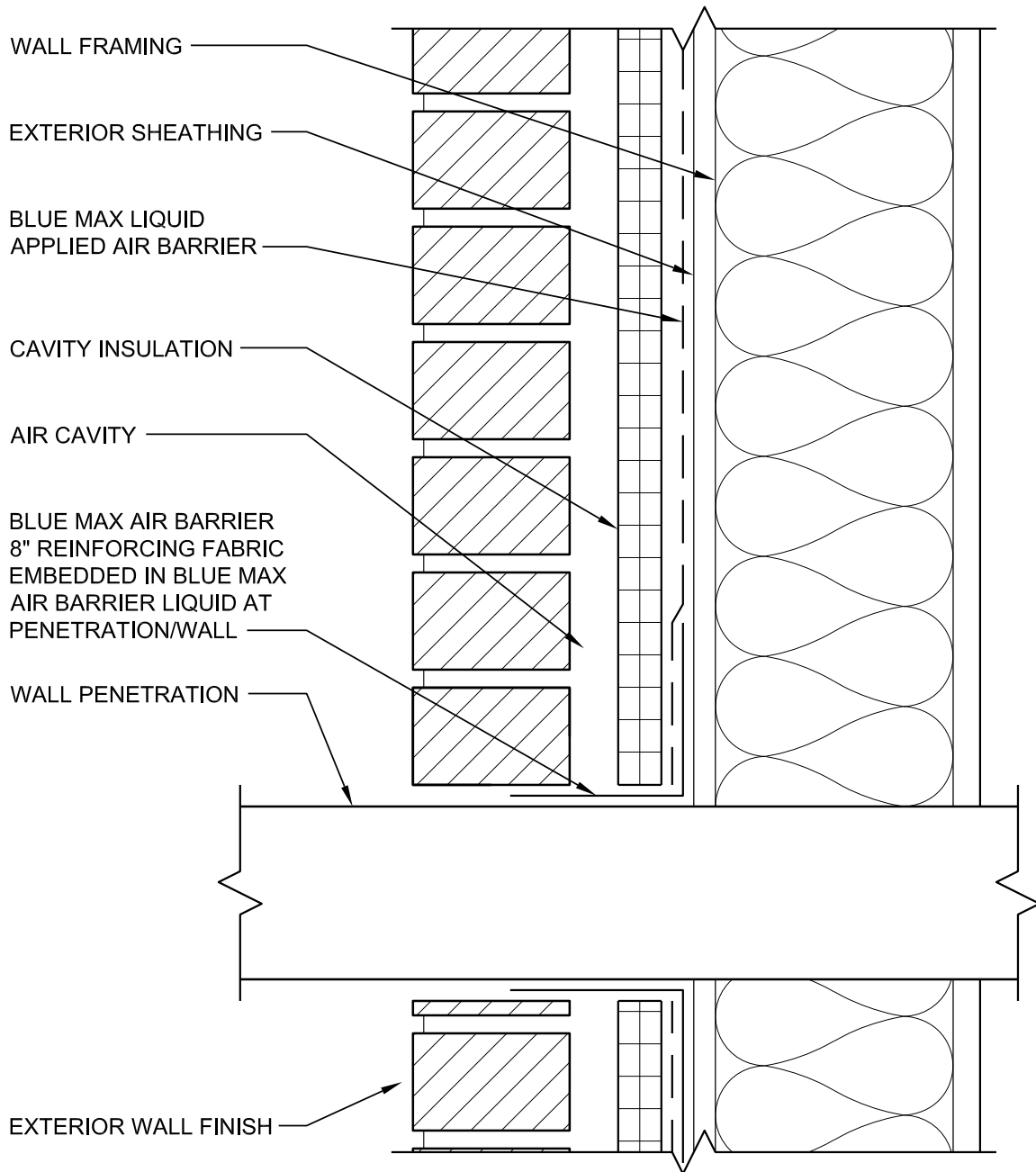
DETAIL: CHANGE IN SUBSTRATE DETAIL



Blue Max Air Barrier  
 Ames Research Laboratories, Inc.  
 1891 16th St SE  
 Salem, OR USA 97302-1436  
[www.AmesResearch.com](http://www.AmesResearch.com)

AS A MANUFACTURER OF CONSTRUCTION PRODUCTS, AMES RESEARCH LABORATORIES INC. PROVIDES GENERIC DETAILS AS A GENERAL GUIDE FOR INFORMATION PURPOSES ONLY AND THESE DETAILS ARE NOT FOR CONSTRUCTION. THESE DETAILS ARE NOT INTENDED TO REPLACE SOUND ENGINEERING AND ARCHITECTURAL PRACTICES AND SHOULD NOT BE RELIED UPON FOR THAT PURPOSE. AMES RESEARCH ASSUMES NO LIABILITY WITH RESPECT TO THE DESIGN OF THE SYSTEM. THE ARCHITECT, CONSULTANT, AND/OR ENGINEER OR DESIGN PROFESSIONAL FOR A PARTICULAR PROJECT BEARS THE SOLE RESPONSIBILITY FOR THE DESIGN OF THE SYSTEM, FOR THE PREPARATION AND APPROVAL OF THE PROJECT SPECIFICATIONS, DETAILS AND SHOP DRAWINGS, AND FOR DETERMINING THEIR SUITABILITY FOR A PARTICULAR PROJECT OR APPLICATION. WHILE AMES RESEARCH PROVIDES GENERAL INSTRUCTIONS FOR THE INSTALLATION OF ITS MATERIALS, THE MEANS AND METHODS USED BY THE CONTRACTOR FOR MATERIAL STORAGE, SUBSTRATE EVALUATION, SURFACE PREPARATION AND THE INSTALLATION OF BOTH AMES AND NON-AMES MATERIALS ARE THE RESPONSIBILITY OF THE CONTRACTOR. THE CONTRACTOR MUST ALWAYS READ AND FOLLOW THE WARNINGS AND INSTRUCTIONS ON AMES PRODUCT LABELS, TECHNICAL DATA SHEETS, AND MATERIAL SAFETY DATA SHEETS AVAILABLE AT [WWW.AMESRESEARCH.COM](http://WWW.AMESRESEARCH.COM). AMES RESEARCH MAKES NO WARRANTY OF ANY KIND, EITHER EXPRESS OR IMPLIED, AS TO THE CONTENT OF THIS GUIDE DETAIL. AMES SHALL NOT BE RESPONSIBLE UNDER ANY LEGAL THEORY TO ANY THIRD PARTY FOR ANY DIRECT OR CONSEQUENTIAL DAMAGES OF ANY KIND ARISING FROM THE USE OF THIS GUIDE DETAIL. ALL PRODUCTS AND SERVICES PROVIDED BY AMES RESEARCH ARE SUBJECT TO ITS TERMS AND CONDITIONS OF SALE AVAILABLE AT [WWW.AMESRESEARCH.COM](http://WWW.AMESRESEARCH.COM)





SHEET: **AB-9**

SCALE: NTS

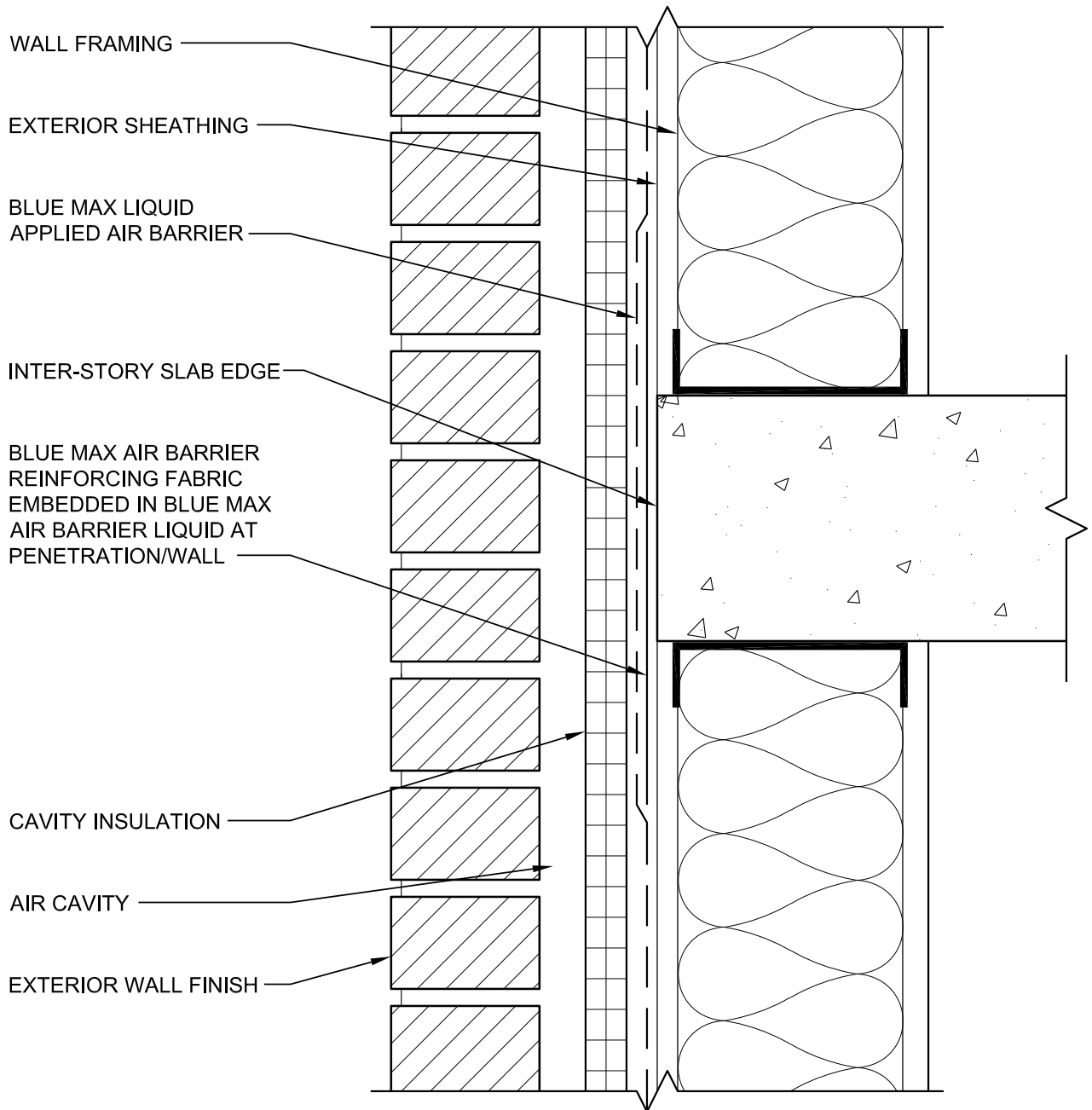
DATE: 04/30/2020

DETAIL: WALL PENETRATIONS DETAIL



Blue Max Air Barrier  
 Ames Research Laboratories, Inc.  
 1891 16th St SE  
 Salem, OR USA 97302-1436  
[www.AmesResearch.com](http://www.AmesResearch.com)

AS A MANUFACTURER OF CONSTRUCTION PRODUCTS, AMES RESEARCH LABORATORIES INC. PROVIDES GENERIC DETAILS AS A GENERAL GUIDE FOR INFORMATION PURPOSES ONLY AND THESE DETAILS ARE NOT FOR CONSTRUCTION. THESE DETAILS ARE NOT INTENDED TO REPLACE SOUND ENGINEERING AND ARCHITECTURAL PRACTICES AND SHOULD NOT BE RELIED UPON FOR THAT PURPOSE. AMES RESEARCH ASSUMES NO LIABILITY WITH RESPECT TO THE DESIGN OF THE SYSTEM. THE ARCHITECT, CONSULTANT, AND/OR ENGINEER OR DESIGN PROFESSIONAL FOR A PARTICULAR PROJECT BEARS THE SOLE RESPONSIBILITY FOR THE DESIGN OF THE SYSTEM, FOR THE PREPARATION AND APPROVAL OF THE PROJECT SPECIFICATIONS, DETAILS AND SHOP DRAWINGS, AND FOR DETERMINING THEIR SUITABILITY FOR A PARTICULAR PROJECT OR APPLICATION. WHILE AMES RESEARCH PROVIDES GENERAL INSTRUCTIONS FOR THE INSTALLATION OF ITS MATERIALS, THE MEANS AND METHODS USED BY THE CONTRACTOR FOR MATERIAL STORAGE, SUBSTRATE EVALUATION, SURFACE PREPARATION AND THE INSTALLATION OF BOTH AMES AND NON-AMES MATERIALS ARE THE RESPONSIBILITY OF THE CONTRACTOR. THE CONTRACTOR MUST ALWAYS READ AND FOLLOW THE WARNINGS AND INSTRUCTIONS ON AMES PRODUCT LABELS, TECHNICAL DATA SHEETS, AND MATERIAL SAFETY DATA SHEETS AVAILABLE AT [WWW.AMESRESEARCH.COM](http://WWW.AMESRESEARCH.COM). AMES RESEARCH MAKES NO WARRANTY OF ANY KIND, EITHER EXPRESS OR IMPLIED, AS TO THE CONTENT OF THIS GUIDE DETAIL. AMES SHALL NOT BE RESPONSIBLE UNDER ANY LEGAL THEORY TO ANY THIRD PARTY FOR ANY DIRECT OR CONSEQUENTIAL DAMAGES OF ANY KIND ARISING FROM THE USE OF THIS GUIDE DETAIL. ALL PRODUCTS AND SERVICES PROVIDED BY AMES RESEARCH ARE SUBJECT TO ITS TERMS AND CONDITIONS OF SALE AVAILABLE AT [WWW.AMESRESEARCH.COM](http://WWW.AMESRESEARCH.COM)



SHEET: **AB-10**

SCALE: NTS

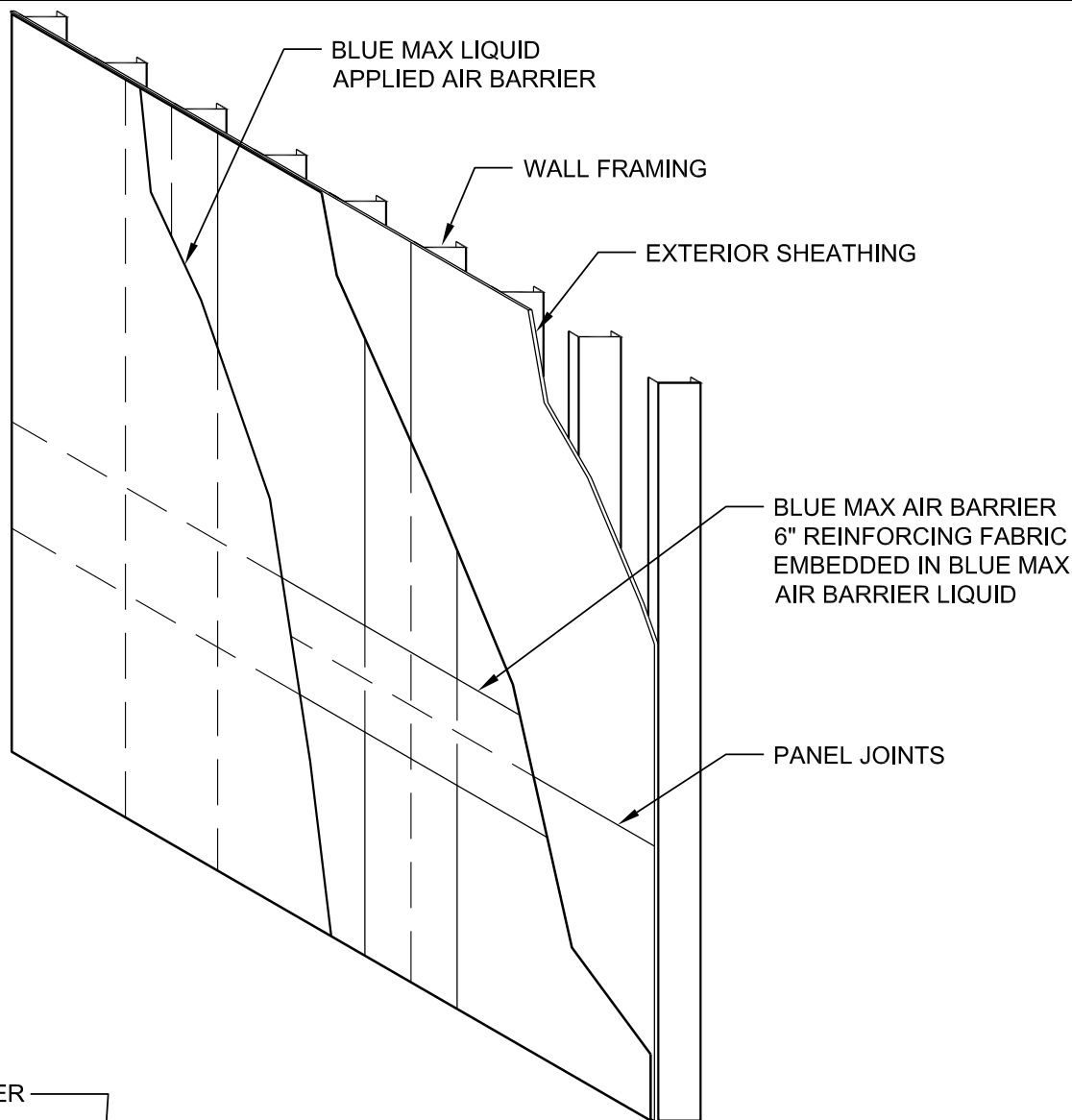
DATE: 04/30/2020

DETAIL: INTER-STORY CONNECTION



Blue Max Air Barrier  
Ames Research Laboratories, Inc.  
1891 16th St SE  
Salem, OR USA 97302-1436  
[www.AmesResearch.com](http://www.AmesResearch.com)

AS A MANUFACTURER OF CONSTRUCTION PRODUCTS, AMES RESEARCH LABORATORIES INC. PROVIDES GENERIC DETAILS AS A GENERAL GUIDE FOR INFORMATION PURPOSES ONLY AND THESE DETAILS ARE NOT FOR CONSTRUCTION. THESE DETAILS ARE NOT INTENDED TO REPLACE SOUND ENGINEERING AND ARCHITECTURAL PRACTICES AND SHOULD NOT BE RELIED UPON FOR THAT PURPOSE. AMES RESEARCH ASSUMES NO LIABILITY WITH RESPECT TO THE DESIGN OF THE SYSTEM. THE ARCHITECT, CONSULTANT, AND/OR ENGINEER OR DESIGN PROFESSIONAL FOR A PARTICULAR PROJECT BEARS THE SOLE RESPONSIBILITY FOR THE DESIGN OF THE SYSTEM, FOR THE PREPARATION AND APPROVAL OF THE PROJECT SPECIFICATIONS, DETAILS AND SHOP DRAWINGS, AND FOR DETERMINING THEIR SUITABILITY FOR A PARTICULAR PROJECT OR APPLICATION. WHILE AMES RESEARCH PROVIDES GENERAL INSTRUCTIONS FOR THE INSTALLATION OF ITS MATERIALS, THE MEANS AND METHODS USED BY THE CONTRACTOR FOR MATERIAL STORAGE, SUBSTRATE EVALUATION, SURFACE PREPARATION AND THE INSTALLATION OF BOTH AMES AND NON-AMES MATERIALS ARE THE RESPONSIBILITY OF THE CONTRACTOR. THE CONTRACTOR MUST ALWAYS READ AND FOLLOW THE WARNINGS AND INSTRUCTIONS ON AMES PRODUCT LABELS, TECHNICAL DATA SHEETS, AND MATERIAL SAFETY DATA SHEETS AVAILABLE AT [WWW.AMESRESEARCH.COM](http://WWW.AMESRESEARCH.COM). AMES RESEARCH MAKES NO WARRANTY OF ANY KIND, EITHER EXPRESS OR IMPLIED, AS TO THE CONTENT OF THIS GUIDE DETAIL. AMES SHALL NOT BE RESPONSIBLE UNDER ANY LEGAL THEORY TO ANY THIRD PARTY FOR ANY DIRECT OR CONSEQUENTIAL DAMAGES OF ANY KIND ARISING FROM THE USE OF THIS GUIDE DETAIL. ALL PRODUCTS AND SERVICES PROVIDED BY AMES RESEARCH ARE SUBJECT TO ITS TERMS AND CONDITIONS OF SALE AVAILABLE AT [WWW.AMESRESEARCH.COM](http://WWW.AMESRESEARCH.COM)



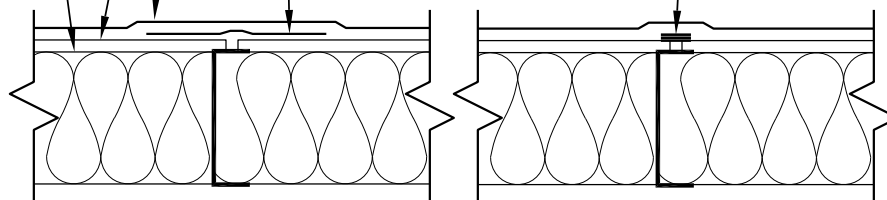
BLUE MAX LIQUID APPLIED AIR BARRIER

EXTERIOR SHEATHING

WALL FRAMING

BLUE MAX AIR BARRIER REINFORCING FABRIC EMBEDDED IN BLUE MAX AIR BARRIER LIQUID

BLUE MAX GUN & TROWEL GRADE LIQUID FLASHING



OPTION A  
WITH BLUE MAX AIR  
BARRIER REINFORCING  
FABRIC

OPTION B  
WITH BLUE MAX TROWEL  
GRADE LIQUID FLASHING

SHEET: **AB-11**

SCALE: NTS

DATE: 04/30/2020

DETAIL: SUBSTRATE JOINT DETAIL



Blue Max Air Barrier  
Ames Research Laboratories, Inc.  
1891 16th St SE  
Salem, OR USA 97302-1436  
[www.AmesResearch.com](http://www.AmesResearch.com)

AS A MANUFACTURER OF CONSTRUCTION PRODUCTS, AMES RESEARCH LABORATORIES INC. PROVIDES GENERIC DETAILS AS A GENERAL GUIDE FOR INFORMATION PURPOSES ONLY AND THESE DETAILS ARE NOT FOR CONSTRUCTION. THESE DETAILS ARE NOT INTENDED TO REPLACE SOUND ENGINEERING AND ARCHITECTURAL PRACTICES AND SHOULD NOT BE RELIED UPON FOR THAT PURPOSE. AMES RESEARCH ASSUMES NO LIABILITY WITH RESPECT TO THE DESIGN OF THE SYSTEM. THE ARCHITECT, CONSULTANT, AND/OR ENGINEER OR DESIGN PROFESSIONAL FOR A PARTICULAR PROJECT BEARS THE SOLE RESPONSIBILITY FOR THE DESIGN OF THE SYSTEM, FOR THE PREPARATION AND APPROVAL OF THE PROJECT SPECIFICATIONS, DETAILS AND SHOP DRAWINGS, AND FOR DETERMINING THEIR SUITABILITY FOR A PARTICULAR PROJECT OR APPLICATION. WHILE AMES RESEARCH PROVIDES GENERAL INSTRUCTIONS FOR THE INSTALLATION OF ITS MATERIALS, THE MEANS AND METHODS USED BY THE CONTRACTOR FOR MATERIAL STORAGE, SUBSTRATE EVALUATION, SURFACE PREPARATION AND THE INSTALLATION OF BOTH AMES AND NON-AMES MATERIALS ARE THE RESPONSIBILITY OF THE CONTRACTOR. THE CONTRACTOR MUST ALWAYS READ AND FOLLOW THE WARNINGS AND INSTRUCTIONS ON AMES PRODUCT LABELS, TECHNICAL DATA SHEETS, AND MATERIAL SAFETY DATA SHEETS AVAILABLE AT [WWW.AMESRESEARCH.COM](http://WWW.AMESRESEARCH.COM). AMES RESEARCH MAKES NO WARRANTY OF ANY KIND, EITHER EXPRESS OR IMPLIED, AS TO THE CONTENT OF THIS GUIDE DETAIL. AMES SHALL NOT BE RESPONSIBLE UNDER ANY LEGAL THEORY TO ANY THIRD PARTY FOR ANY DIRECT OR CONSEQUENTIAL DAMAGES OF ANY KIND ARISING FROM THE USE OF THIS GUIDE DETAIL. ALL PRODUCTS AND SERVICES PROVIDED BY AMES RESEARCH ARE SUBJECT TO ITS TERMS AND CONDITIONS OF SALE AVAILABLE AT [WWW.AMESRESEARCH.COM](http://WWW.AMESRESEARCH.COM)