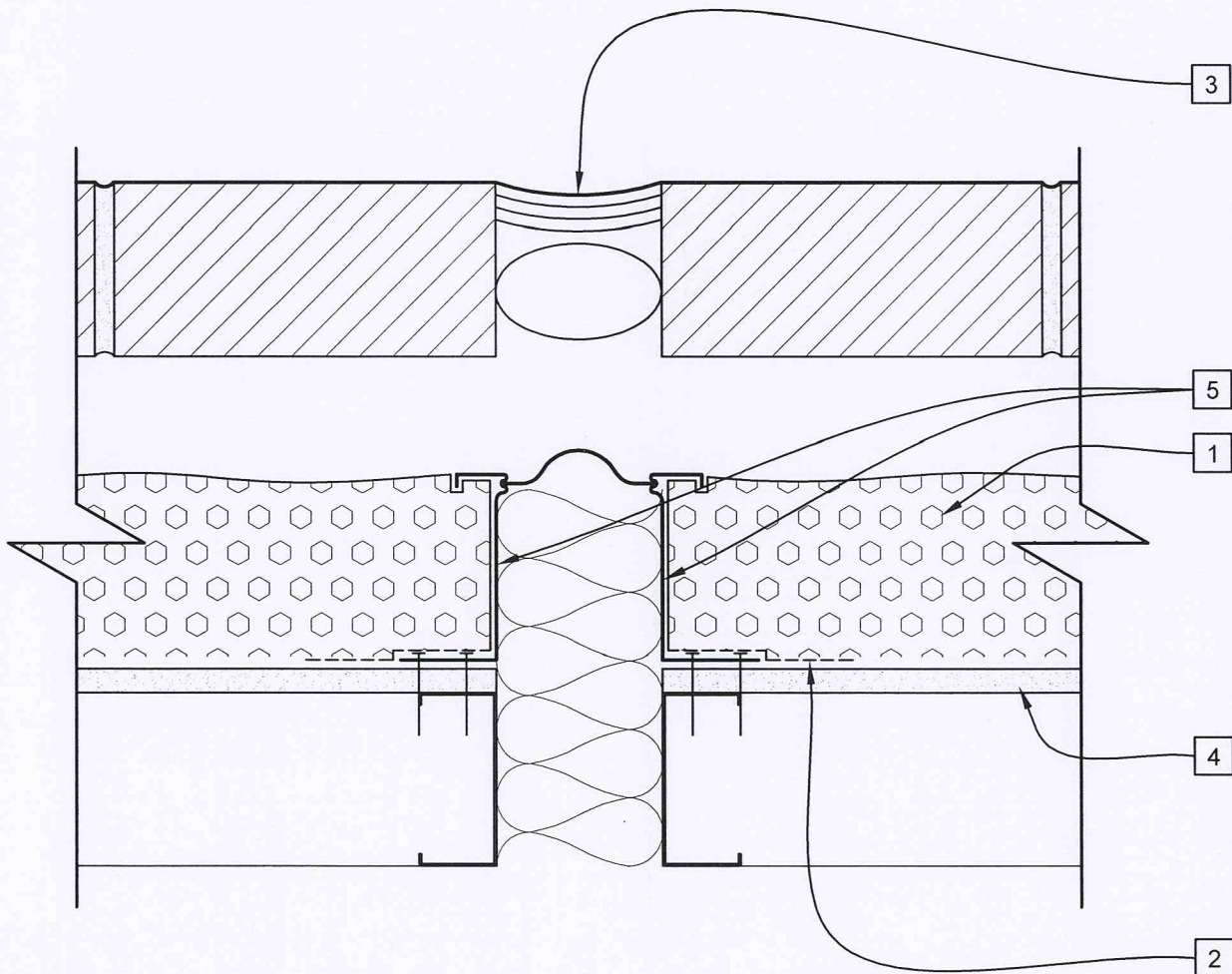


LEGEND

- 1 JM CORBOND III™
- 2 TRANSITION MEMBRANE FULLY ADHERED TO WALL.
- 3 CAULK & BACKER ROD.
- 4 EXTERIOR GYPSUM SHEATHING.
- 5 PRIME METAL AS NEEDED.



EXPANSION JOINT

SKETCH NO.

AB7

SCALE
3"=1'-0"

ISSUE DATE
06/03/11

REV. NO.

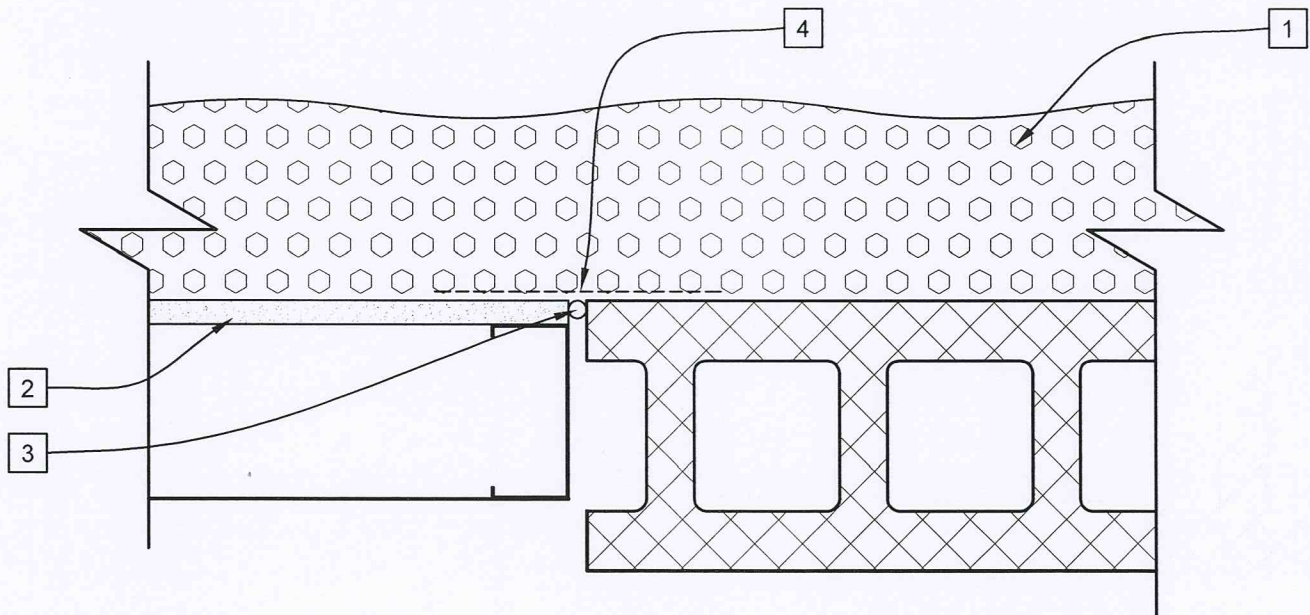
CAD FILE:
EXPANSION JOINT.dwg

Johns Manville and Corbond Corporation (together, "JM") Manufacture spray polyurethane foam insulation products and offer this general conceptual information to you as a courtesy. This complimentary assistance is not to be used or relied upon by anyone as a substitute for professional engineering design and documentation required by building code, contract, or applicable law. By accepting these comments you agree they do not constitute any representations, endorsements of, or an assumption by JM of any liability for either the adequacy of the design of this building or any other material not supplied by JM.



LEGEND

- 1 JM CORBOND III™
- 2 EXTERIOR GYPSUM SHEATHING.
- 3 BACKER ROD AS NEEDED.
- 4 TRANSITION MEMBRANE FULLY ADHERED TO WALL.



CHANGE IN SUBSTRATE

SKETCH NO.

AB8

SCALE
3"=1'-0"

ISSUE DATE
06/03/11

REV. NO.

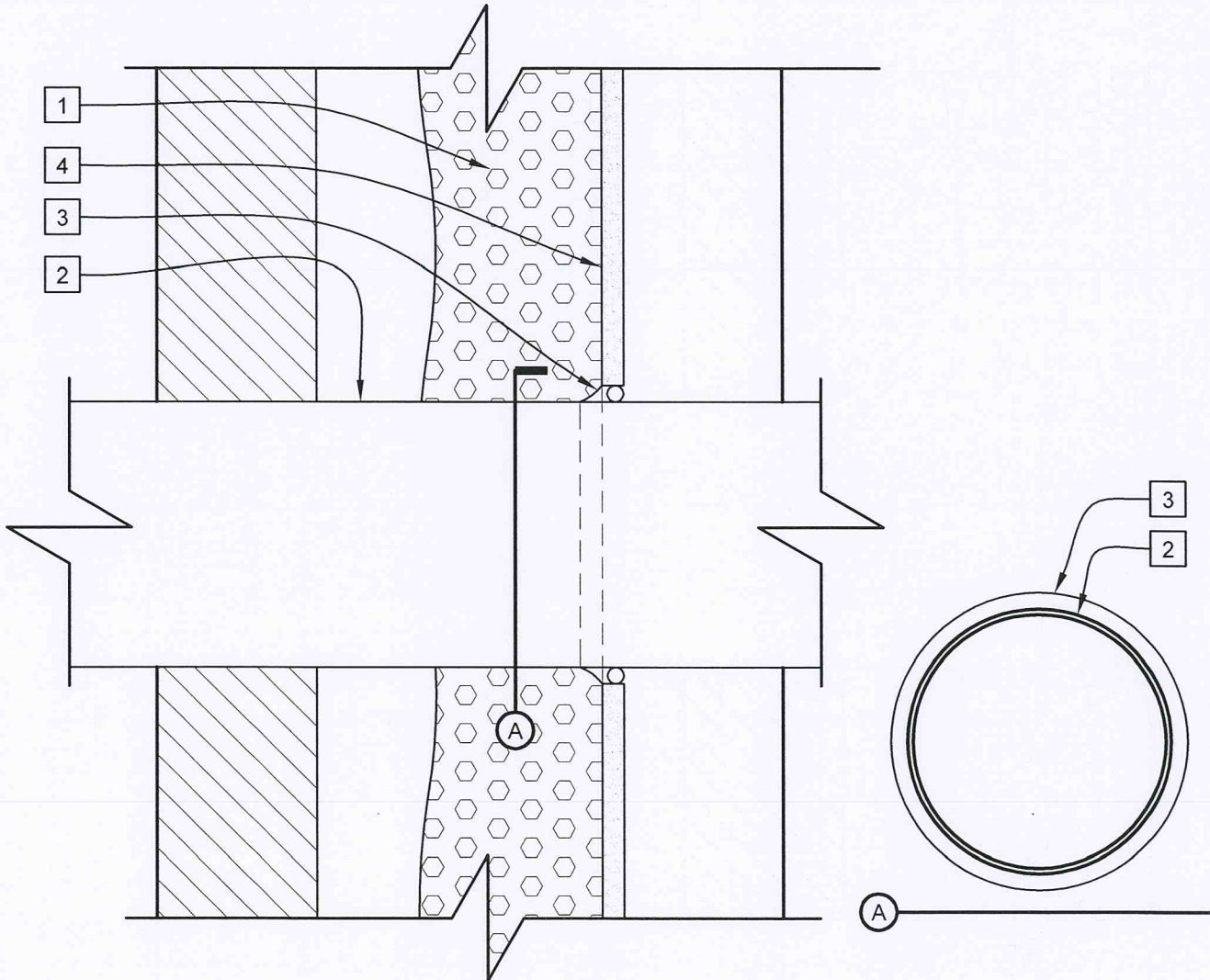
CAD FILE:
CHANGE IN SUBSTRATE.dwg

Johns Manville and Corbond Corporation (together, "JM") Manufacture spray polyurethane foam insulation products and offer this general conceptual information to you as a courtesy. This complimentary assistance is not to be used or relied upon by anyone as a substitute for professional engineering design and documentation required by building code, contract, or applicable law. By accepting these comments you agree they do not constitute any representations, endorsements of, or an assumption by JM of any liability for either the adequacy of the design of this building or any other material not supplied by JM.



LEGEND

- 1 JM CORBOND III TM
- 2 PIPE.
- 3 URETHANE FLEXIBLE CAULK.
- 4 EXTERIOR GYPSUM SHEATHING.



PENETRATIONS - AMBIENT TEMPERATURE

SKETCH NO.

AB9

SCALE
3"=1'-0"

ISSUE DATE
06/03/11

REV. NO.

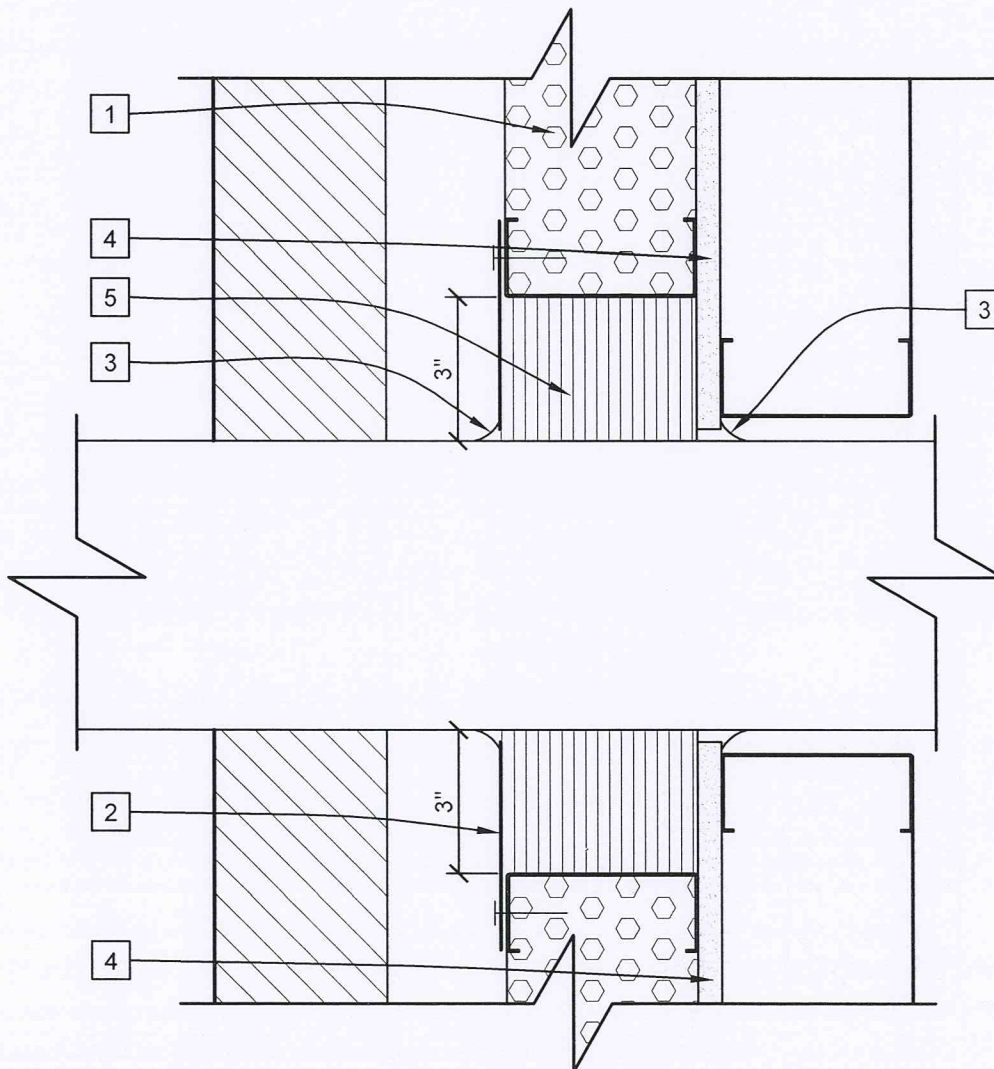
CAD FILE:
PENETRATIONS.dwg

Johns Manville and Corbond Corporation (together, "JM") Manufacture spray polyurethane foam insulation products and offer this general conceptual information to you as a courtesy. This complimentary assistance is not to be used or relied upon by anyone as a substitute for professional engineering design and documentation required by building code, contract, or applicable law. By accepting these comments you agree they do not constitute any representations, endorsements of, or an assumption by JM of any liability for either the adequacy of the design of this building or any other material not supplied by JM.



LEGEND

- 1 JM CORBOND III TM
- 2 METAL FLANGE
- 3 FIRE CAULK.
- 4 NON COMBUSTIBLE SHEATHING.
- 5 ROCKWOOL



HIGH TEMPERATURE PENETRATIONS

SKETCH NO.

AB10

SCALE
3"=1'-0"

ISSUE DATE
06/03/11

REV. NO.

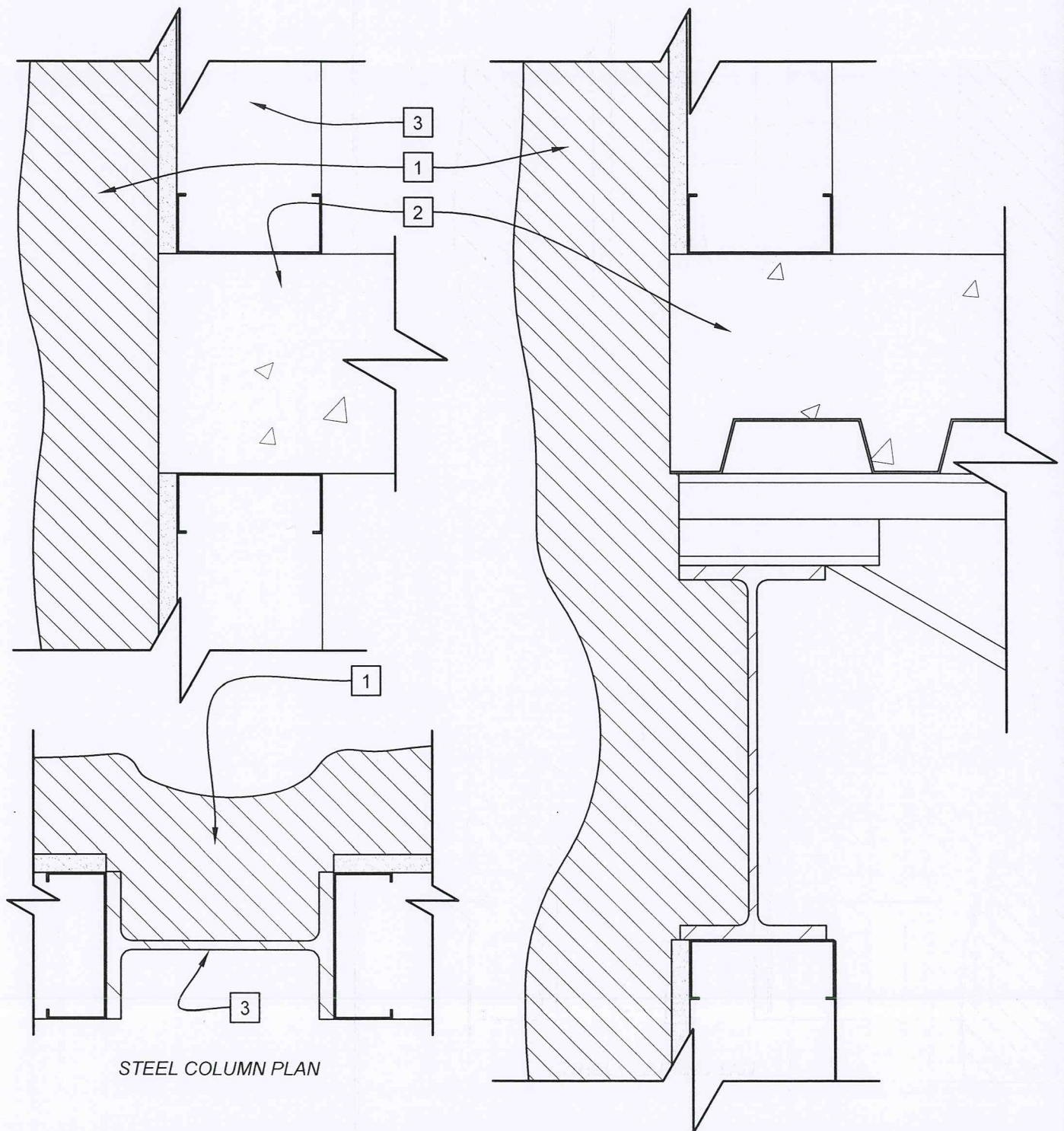
CAD FILE:
HIGH TEMP PENETRATIONS.dwg

Johns Manville and Corbond Corporation (together, "JM") Manufacture spray polyurethane foam insulation products and offer this general conceptual information to you as a courtesy. This complimentary assistance is not to be used or relied upon by anyone as a substitute for professional engineering design and documentation required by building code, contract, or applicable law. By accepting these comments you agree they do not constitute any representations, endorsements of, or an assumption by JM of any liability for either the adequacy of the design of this building or any other material not supplied by JM.



LEGEND

- 1 JM CORBOND III™
- 2 FLOOR STRUCTURE
- 3 WALL STRUCTURE.



STEEL COLUMN PLAN

INTERSTORY CONNECTIONS

SKETCH NO.

AB11

SCALE

3"=1'-0"

ISSUE DATE

06/03/11

REV. NO.

CAD FILE:

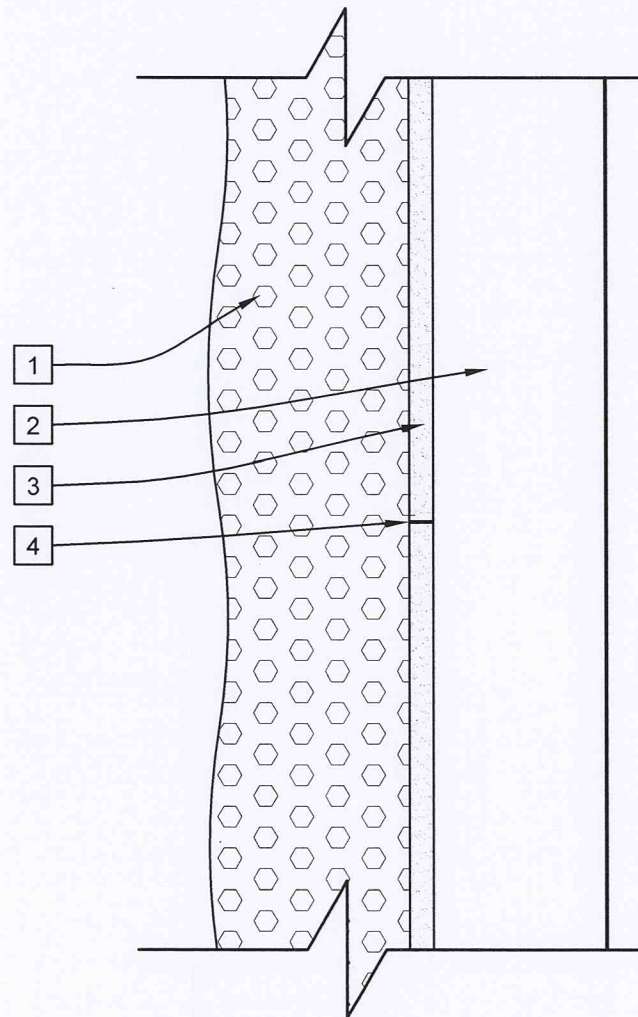
INTERSTORY CONNECTIONS.dwg

Johns Manville and Corbond Corporation (together, "JM") Manufacture spray polyurethane foam insulation products and offer this general conceptual information to you as a courtesy. This complimentary assistance is not to be used or relied upon by anyone as a substitute for professional engineering design and documentation required by building code, contract, or applicable law. By accepting these comments you agree they do not constitute any representations, endorsements of, or an assumption by JM of any liability for either the adequacy of the design of this building or any other material not supplied by JM.



LEGEND

- 1 JM CORBOND III™
- 2 WALL STRUCTURE.
- 3 EXTERIOR GYPSUM SHEATHING.
- 4 JOINT IN EXTERIOR GYPSUM.



SUBSTRATE JOINTS & DEFECTS

SKETCH NO.

AB12

SCALE
3"=1'-0"

ISSUE DATE
06/03/11

REV. NO.

CAD FILE:
SUBSTRATE JOINTS & DEFECTS.dwg

Johns Manville and Corbond Corporation (together, "JM") Manufacture spray polyurethane foam insulation products and offer this general conceptual information to you as a courtesy. This complimentary assistance is not to be used or relied upon by anyone as a substitute for professional engineering design and documentation required by building code, contract, or applicable law. By accepting these comments you agree they do not constitute any representations, endorsements of, or an assumption by JM of any liability for either the adequacy of the design of this building or any other material not supplied by JM.

