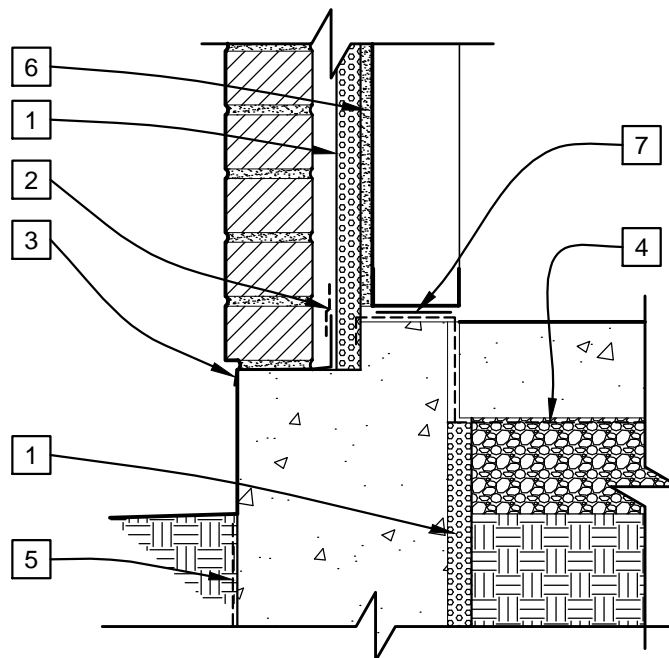


# LEGEND

- 1 AP™ FOIL FACED SHEATHING
- 2 FLASHING TAPE
- 3 THROUGH-WALL FLASHING INTERFACED W/ AIR BARRIER TO PROVIDE A SHINGLE AFFECT.
- 4 TYPE 1 VAPOR BARRIER.
- 5 MOISTURE BARRIER UP TO LEVEL OF GRADE.
- 6 OPTIONAL EXTERIOR SHEATHING.
- 7 FOAM GASKET



## FLOOR SLAB TO FOUNDATION WALL

SKETCH NO.

**AP1**

SCALE  
1 1/2"=1'-0"

ISSUE DATE  
06/27/13

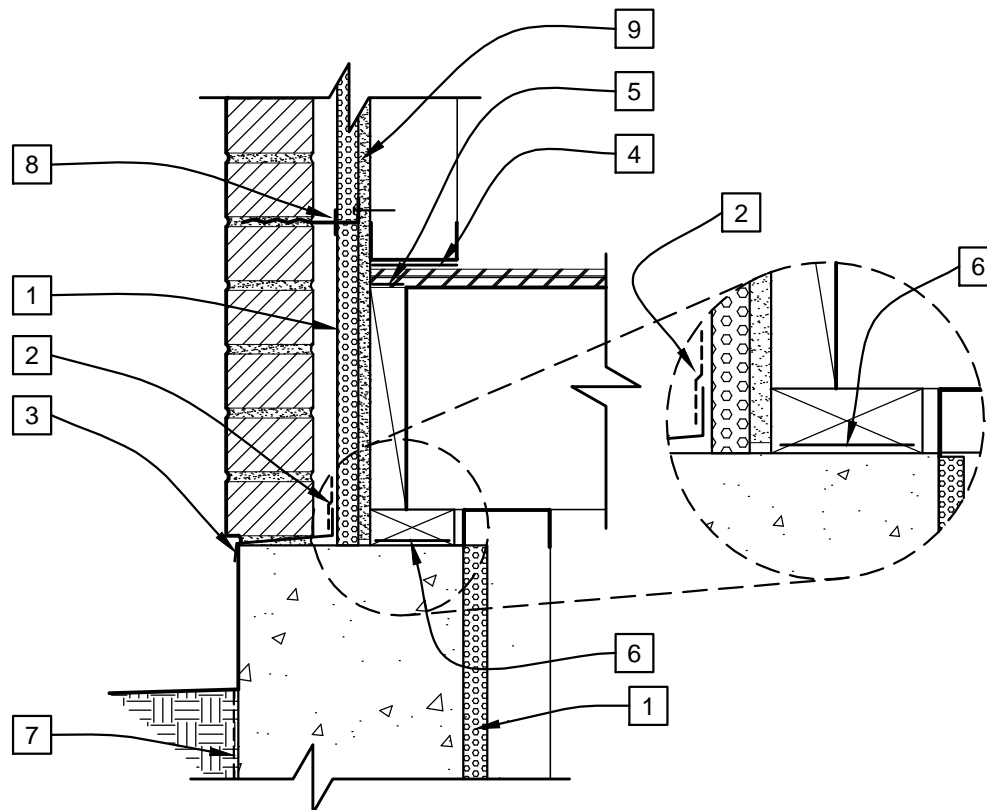
REV. NO.

CAD FILE:  
FLOOR SLAB TO FOUNDATION.dwg

Johns Manville ("JM") manufactures closed-cell polyisocyanurate foam sheathing insulation products and offer this general conceptual information to you as a courtesy. This complimentary assistance is not to be used or relied upon by anyone as a substitute for professional engineering design and documentation required by building code, contract, or applicable law. By accepting these comments you agree they do not constitute any representations, endorsements of, or an assumption by JM of any liability for either the adequacy of the design of this building or any other material not supplied by JM.



- 1 AP™ FOIL FACED SHEATHING
- 2 FLASHING TAPE
- 3 THROUGH-WALL FLASHING.
- 4 AIRTIGHT GASKET BETWEEN WALL PLATE & SUBFLOOR. SEAL FLOOR JOINTS.
- 5 SEALANT BETWEEN SUBFLOOR & RIM JOIST.
- 6 FOAM GASKET.
- 7 MOISTURE BARRIER UP TO LEVEL OF GRADE.
- 8 APPROVED SEALANT
- 9 OPTIONAL EXTERIOR SHEATHING



## FRAMED FLOOR TO FOUNDATION WALL

SKETCH NO.

**AP2**

SCALE  
1 1/2"=1'-0"

ISSUE DATE  
06/27/13

REV. NO.

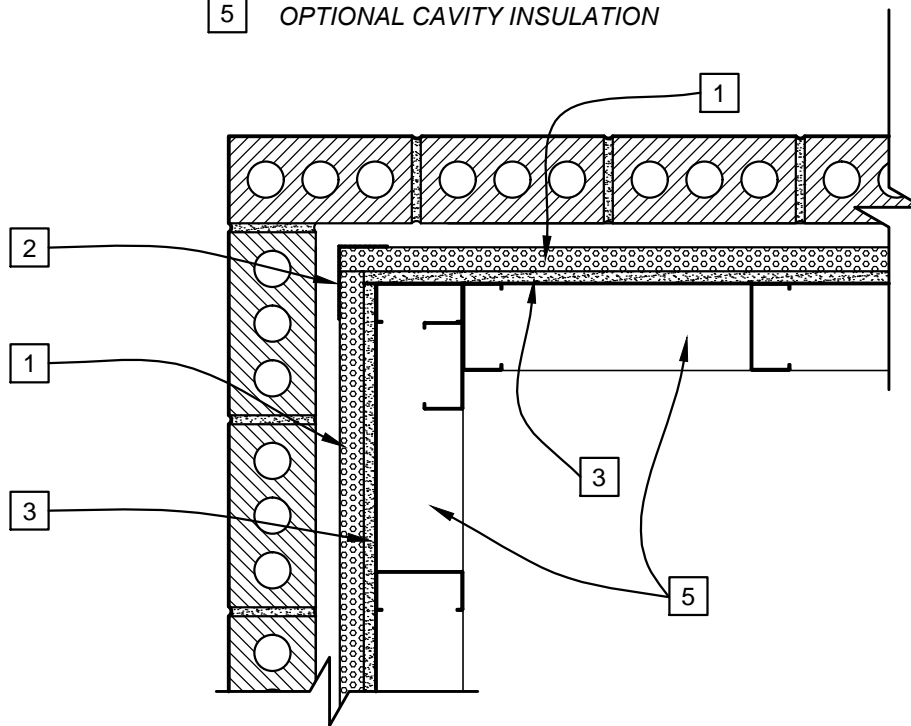
CAD FILE:  
FRAMED FLOOR TO FOUNDATION WALL.dwg

Johns Manville ("JM") manufactures closed-cell polyisocyanurate foam sheathing insulation products and offer this general conceptual information to you as a courtesy. This complimentary assistance is not to be used or relied upon by anyone as a substitute for professional engineering design and documentation required by building code, contract, or applicable law. By accepting these comments you agree they do not constitute any representations, endorsements of, or an assumption by JM of any liability for either the adequacy of the design of this building or any other material not supplied by JM.



# LEGEND

- 1 *AP™ FOIL FACED SHEATHING*
- 2 *FLASHING TAPE*
- 3 *OPTIONAL EXTERIOR SHEATHING.*
- 4 *FLASHING TAPE*
- 5 *OPTIONAL CAVITY INSULATION*



## WALL CORNER

SKETCH NO.

**AP3**

SCALE  
1 1/2"=1'-0"

ISSUE DATE  
06/27/13

REV. NO.

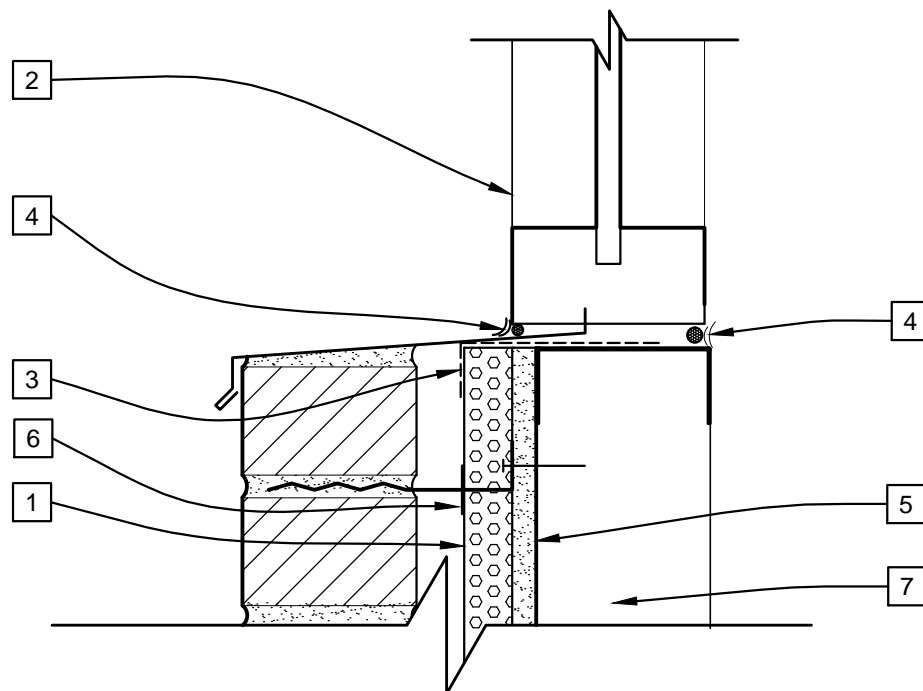
CAD FILE:  
WALL CORNER (PLAN).dwg

Johns Manville ("JM") manufactures closed-cell polyisocyanurate foam sheathing insulation products and offer this general conceptual information to you as a courtesy. This complimentary assistance is not to be used or relied upon by anyone as a substitute for professional engineering design and documentation required by building code, contract, or applicable law. By accepting these comments you agree they do not constitute any representations, endorsements of, or an assumption by JM of any liability for either the adequacy of the design of this building or any other material not supplied by JM.



# LEGEND

- 1 AP™ FOIL FACED SHEATHING
- 2 SEALANT BEAD & BACKER ROD AROUND WINDOW CASING
- 3 FLASHING TAPE
- 4 SEALANT BEAD & BACKER ROD
- 5 OPTIONAL EXTERIOR SHEATHING
- 6 APPROVED SEALANT
- 7 OPTIONAL CAVITY INSULATION



## WINDOW SILL

SKETCH NO.

**AP4**

SCALE  
3"=1'-0"

ISSUE DATE  
06/27/13

REV. NO.

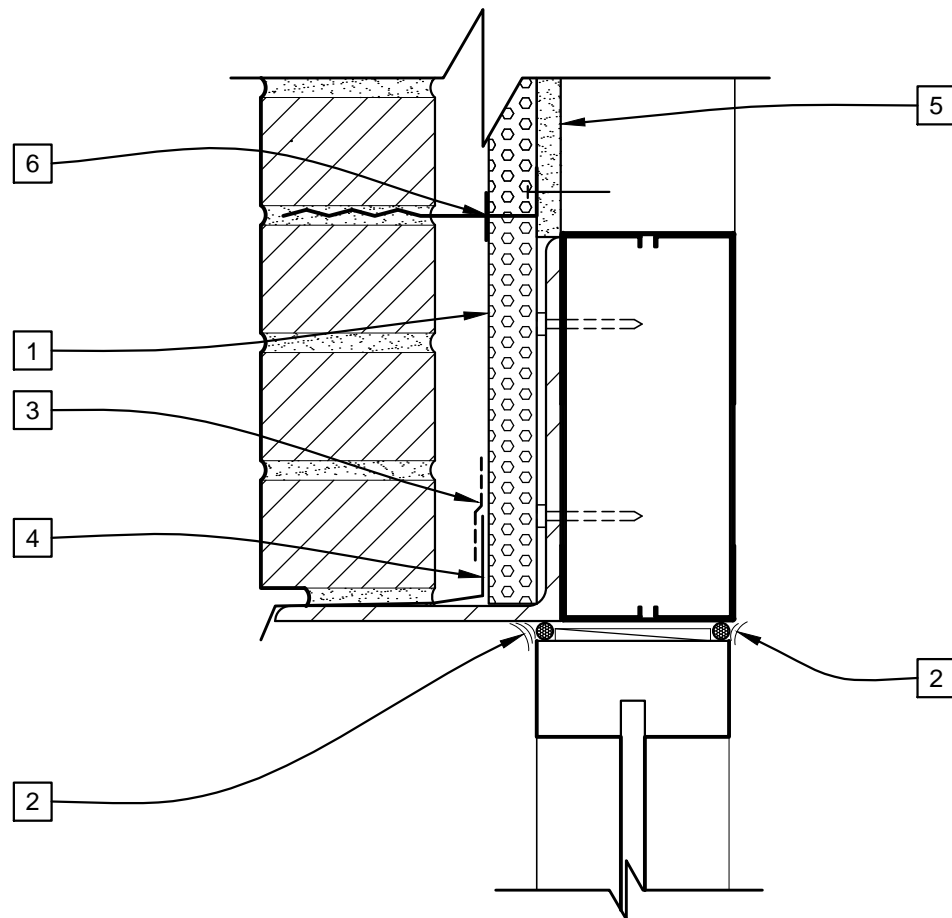
CAD FILE:  
WINDOW SILL.dwg

Johns Manville ("JM") manufactures closed-cell polyisocyanurate foam sheathing insulation products and offer this general conceptual information to you as a courtesy. This complimentary assistance is not to be used or relied upon by anyone as a substitute for professional engineering design and documentation required by building code, contract, or applicable law. By accepting these comments you agree they do not constitute any representations, endorsements of, or an assumption by JM of any liability for either the adequacy of the design of this building or any other material not supplied by JM.



# LEGEND

- 1 AP™ FOIL FACED SHEATHING
- 2 SEALANT BEAD & BACKER ROD
- 3 FLASHING TAPE
- 4 THROUGH-WALL FLASHING
- 5 OPTIONAL EXTERIOR SHEATHING
- 6 APPROVED SEALANT



## WINDOW HEAD

SKETCH NO.

**AP5**

SCALE  
3"=1'-0"

ISSUE DATE  
06/27/13

REV. NO.

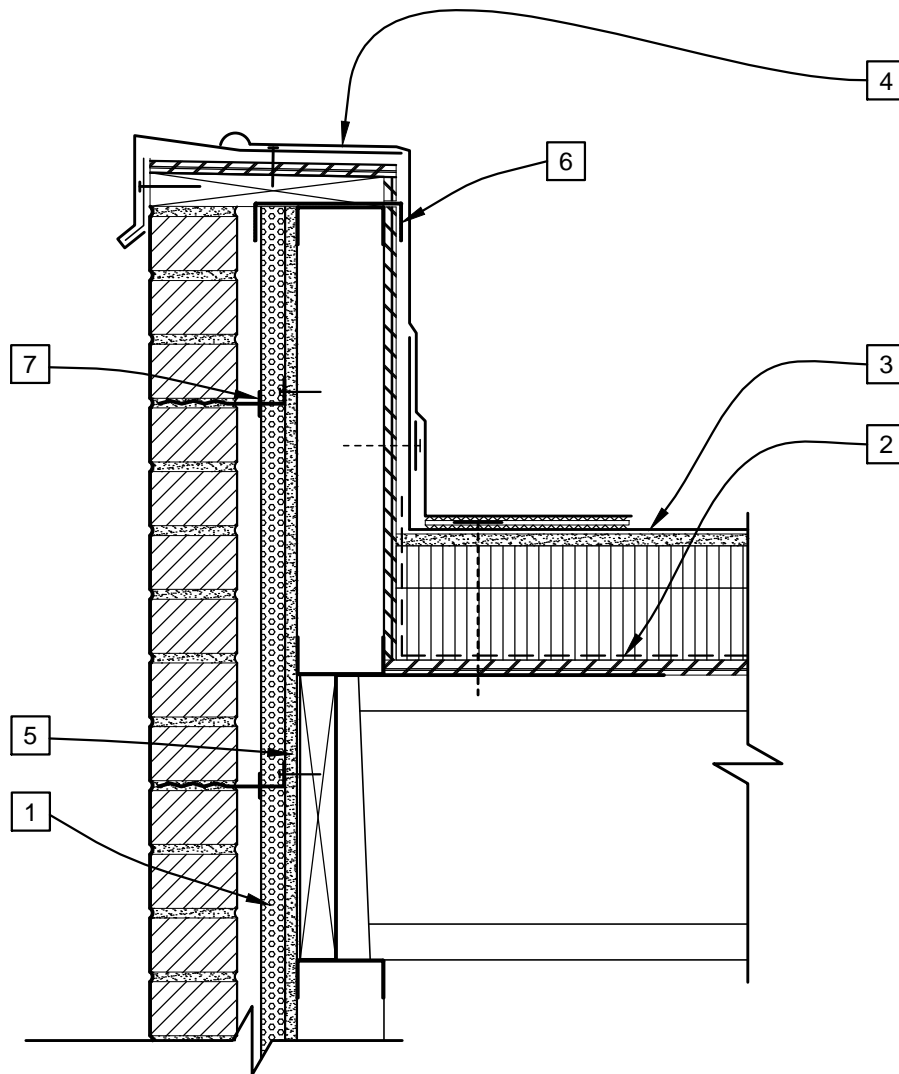
CAD FILE:  
WINDOW HEAD.dwg

Johns Manville ("JM") manufactures closed-cell polyisocyanurate foam sheathing insulation products and offer this general conceptual information to you as a courtesy. This complimentary assistance is not to be used or relied upon by anyone as a substitute for professional engineering design and documentation required by building code, contract, or applicable law. By accepting these comments you agree they do not constitute any representations, endorsements of, or an assumption by JM of any liability for either the adequacy of the design of this building or any other material not supplied by JM.



### LEGEND

- 1 AP™ FOIL FACED SHEATHING
- 2 VAPOR BARRIER WHEN REQUIRED BY LOCAL JURISDICTION
- 3 ROOFING MEMBRANE
- 4 ROOFING SYSTEM FULLY BONDED TO FLASHING COVERING PARAPET FRAME
- 5 OPTIONAL EXTERIOR SHEATHING
- 6 FLASHING TAPE BONDED TO ROOFING SYSTEM (CONTINUITY W/ PLANE OF AIR TIGHTNESS)
- 7 APROVED SEALANT



## PARAPET

SKETCH NO.

**AP6**

SCALE  
1 1/2"=1'-0"

ISSUE DATE  
06/27/13

REV. NO.

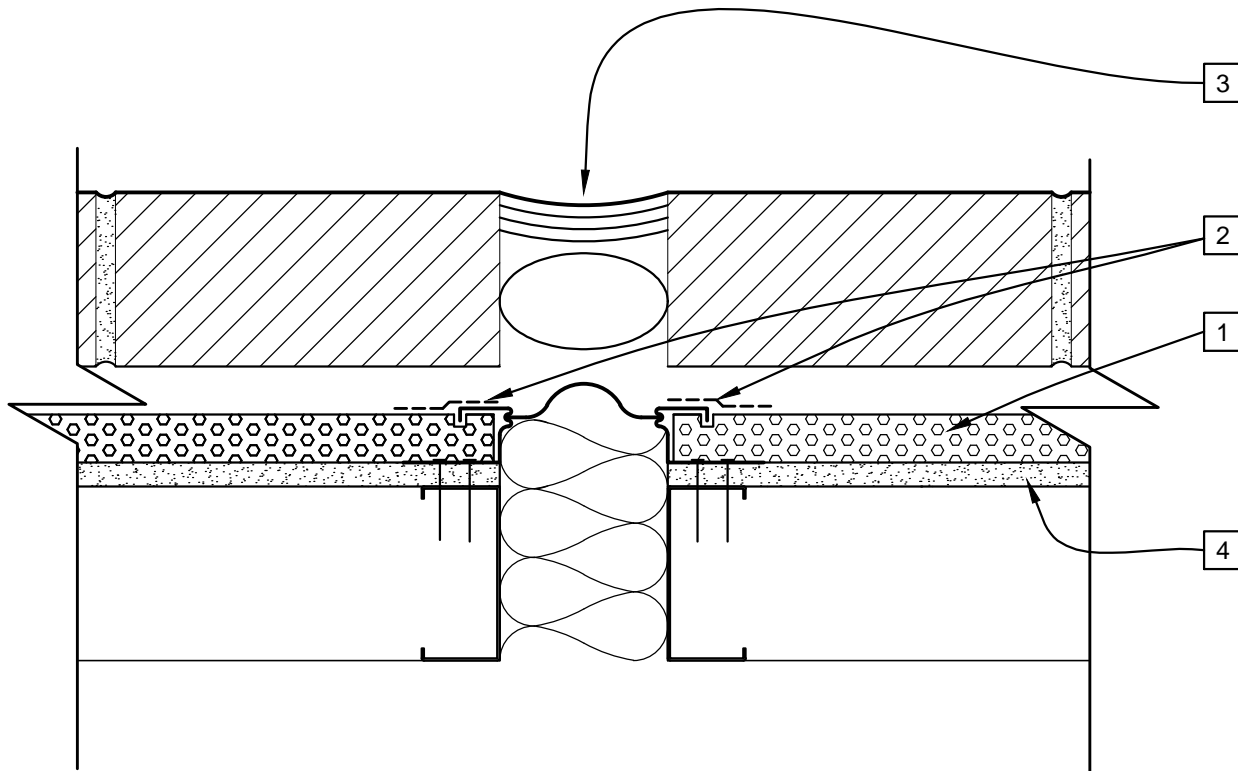
CAD FILE:  
PARAPET DETAIL.dwg

Johns Manville ("JM") manufactures closed-cell polyisocyanurate foam sheathing insulation products and offer this general conceptual information to you as a courtesy. This complimentary assistance is not to be used or relied upon by anyone as a substitute for professional engineering design and documentation required by building code, contract, or applicable law. By accepting these comments you agree they do not constitute any representations, endorsements of, or an assumption by JM of any liability for either the adequacy of the design of this building or any other material not supplied by JM.



### LEGEND

- 1 *AP™ FOIL FACED SHEATHING*
- 2 *FLASHING TAPE*
- 3 *CAULK & BACKER ROD*
- 4 *OPTIONAL EXTERIOR SHEATHING*



## EXPANSION JOINT

SKETCH NO.

**AP7**

SCALE  
3"=1'-0"

ISSUE DATE  
06/27/13

REV. NO.

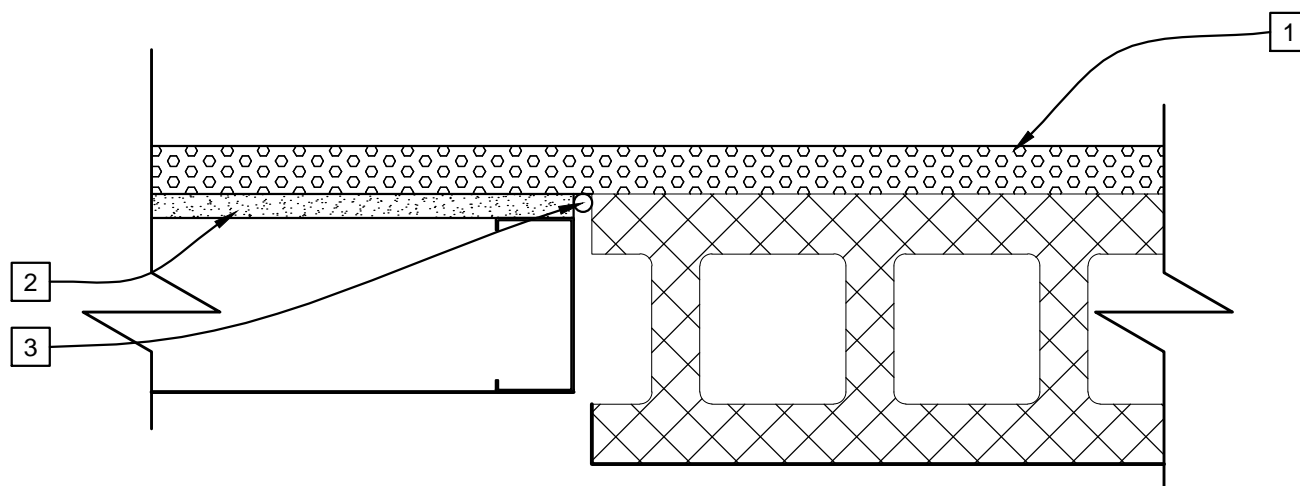
CAD FILE:  
EXPANSION JOINT.dwg

Johns Manville ("JM") manufactures closed-cell polyisocyanurate foam sheathing insulation products and offer this general conceptual information to you as a courtesy. This complimentary assistance is not to be used or relied upon by anyone as a substitute for professional engineering design and documentation required by building code, contract, or applicable law. By accepting these comments you agree they do not constitute any representations, endorsements of, or an assumption by JM of any liability for either the adequacy of the design of this building or any other material not supplied by JM.



# LEGEND

- 1 AP™ FOIL FACED SHEATHING
- 2 EXTERIOR GYPSUM SHEATHING.
- 3 BACKER ROD AS NEEDED.



## CHANGE IN SUBSTRATE

SKETCH NO.

**AP8**

SCALE  
3"=1'-0"

ISSUE DATE  
06/27/13

REV. NO.

CAD FILE:  
CHANGE IN SUBSTRATE.dwg

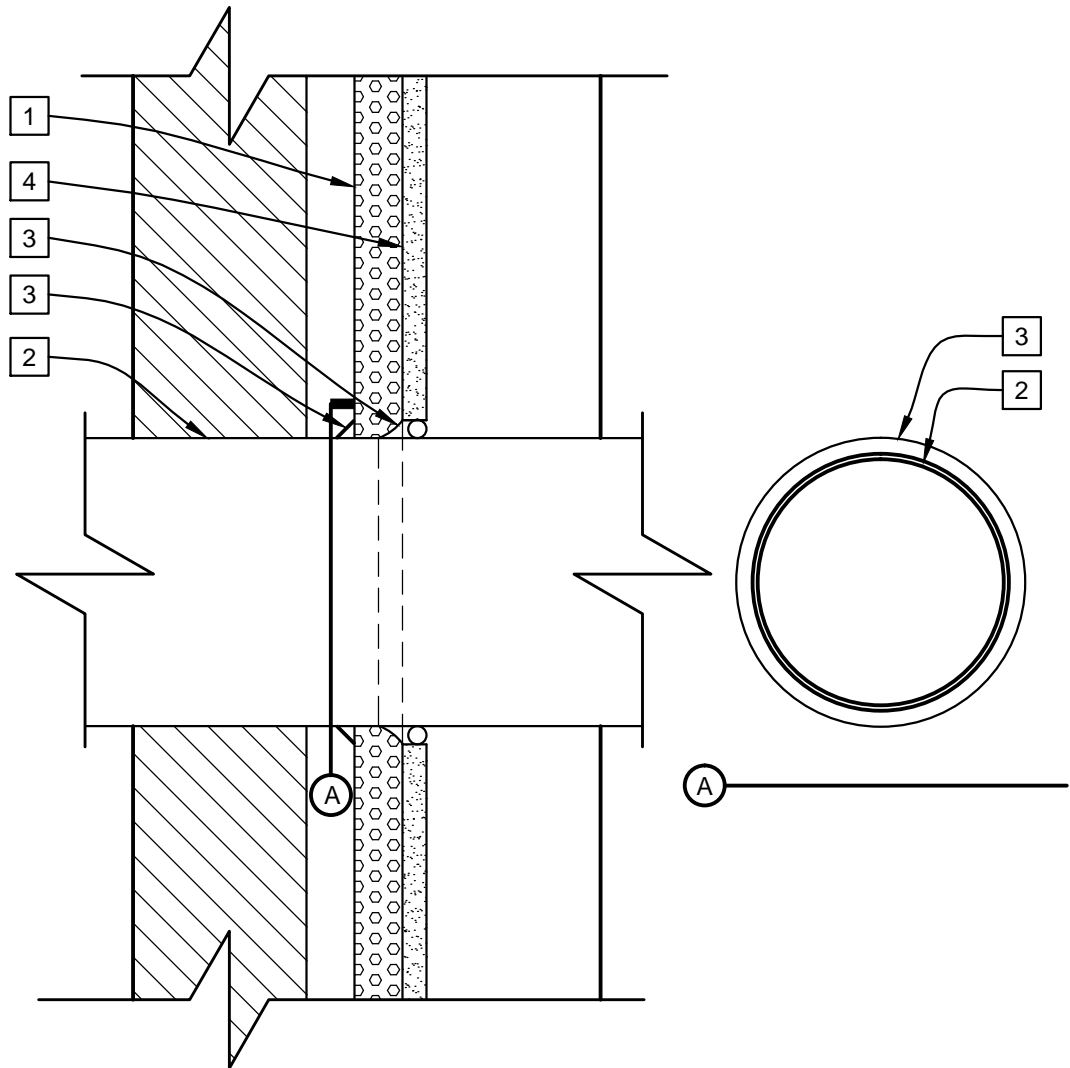
Johns Manville ("JM") manufactures closed-cell polyisocyanurate foam sheathing insulation products and offer this general conceptual information to you as a courtesy. This complimentary assistance is not to be used or relied upon by anyone as a substitute for professional engineering design and documentation required by building code, contract, or applicable law. By accepting these comments you agree they do not constitute any representations, endorsements of, or an assumption by JM of any liability for either the adequacy of the design of this building or any other material not supplied by JM.





# LEGEND

- 1 *AP™ FOIL FACED SHEATHING*
- 2 *PIPE*
- 3 *APPROVED SEALANT*
- 4 *OPTIONAL EXTERIOR SHEATHING*



## PENETRATIONS - AMBIENT TEMPERATURE

SKETCH NO.

**AP9**

SCALE  
3"=1'-0"

ISSUE DATE  
06/27/13

REV. NO.

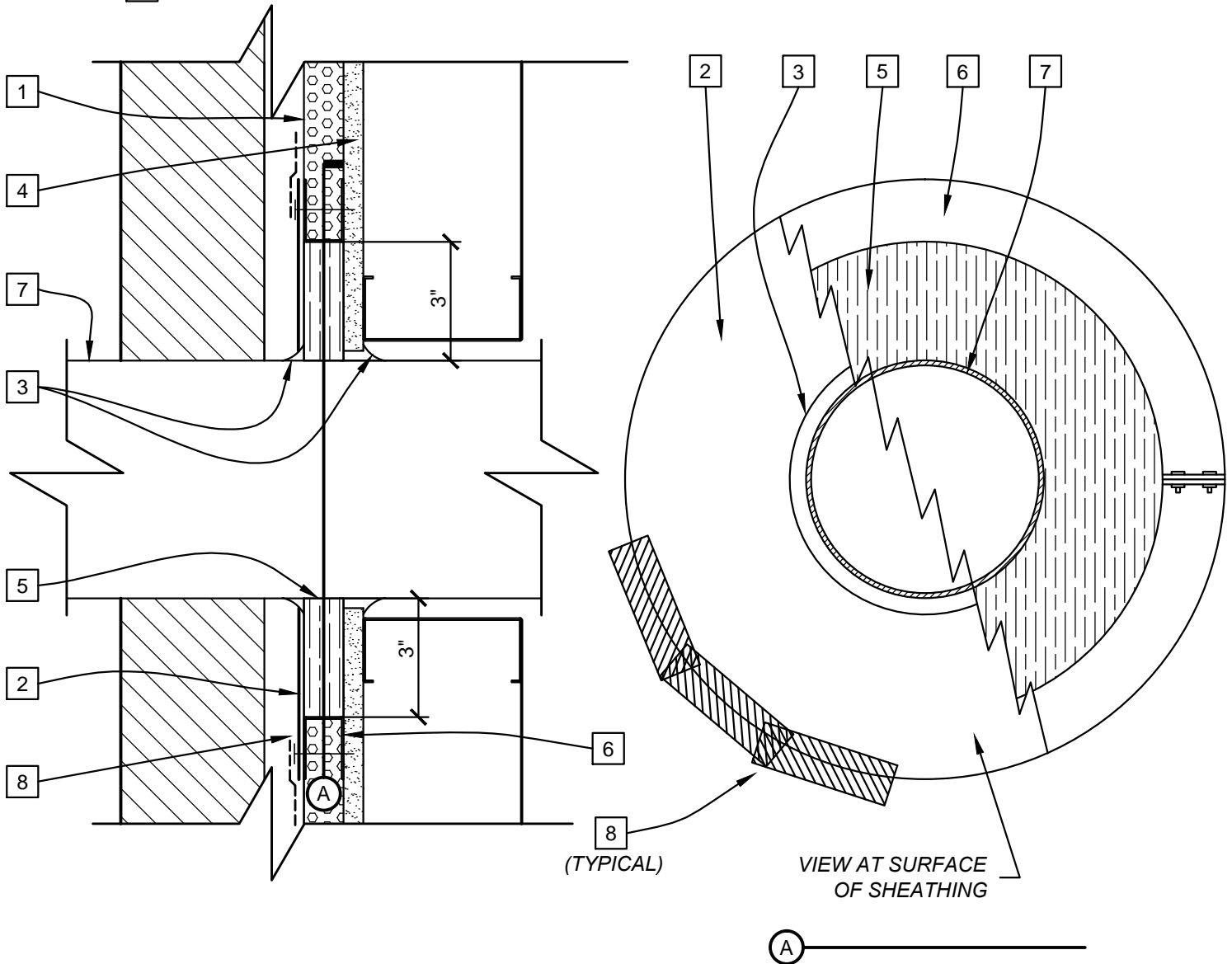
CAD FILE:  
PENETRATIONS.dwg

Johns Manville ("JM") manufactures closed-cell polyisocyanurate foam sheathing insulation products and offer this general conceptual information to you as a courtesy. This complimentary assistance is not to be used or relied upon by anyone as a substitute for professional engineering design and documentation required by building code, contract, or applicable law. By accepting these comments you agree they do not constitute any representations, endorsements of, or an assumption by JM of any liability for either the adequacy of the design of this building or any other material not supplied by JM.



# LEGEND

- 1 AP™ FOIL FACED SHEATHING
- 2 METAL FLANGE
- 3 FIRE CAULK
- 4 NON COMBUSTIBLE SHEATHING
- 5 MINWOOL MINERAL FIBER
- 6 OVERSIZED PIPE COLLAR
- 7 HIGH TEMPERTURE PIPE
- 8 FLASHING TAPE



## HIGH TEMPERATURE PENETRATIONS

SKETCH NO.

AP10

SCALE  
3"=1'-0"

ISSUE DATE  
06/27/13

REV. NO.

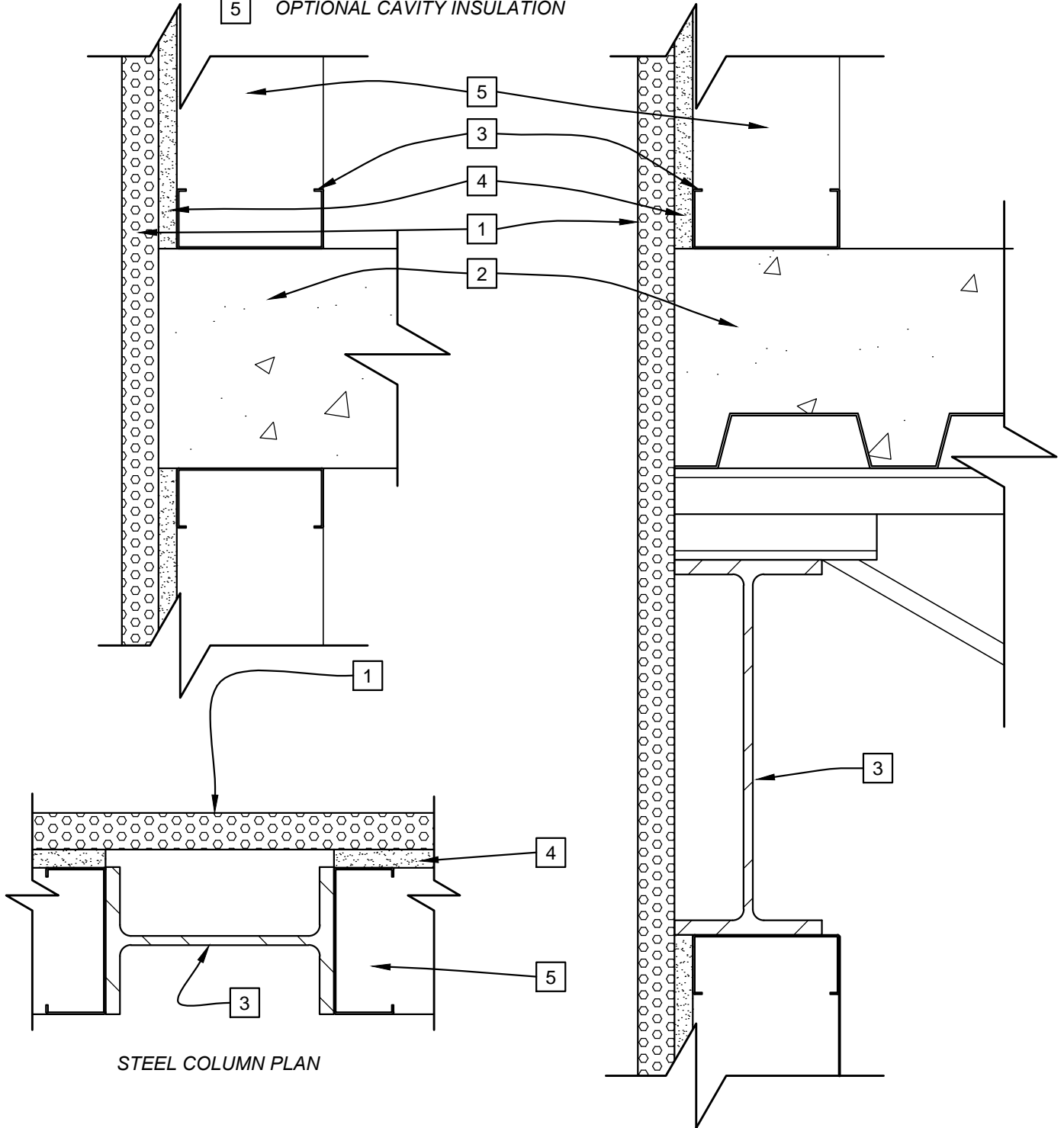
CAD FILE:  
HIGH TEMP PENETRATIONS.dwg

Johns Manville ("JM") manufactures closed-cell polyisocyanurate foam sheathing insulation products and offer this general conceptual information to you as a courtesy. This complimentary assistance is not to be used or relied upon by anyone as a substitute for professional engineering design and documentation required by building code, contract, or applicable law. By accepting these comments you agree they do not constitute any representations, endorsements of, or an assumption by JM of any liability for either the adequacy of the design of this building or any other material not supplied by JM.



# LEGEND

- 1 AP™ FOIL FACED SHEATHING
- 2 FLOOR STRUCTURE
- 3 WALL STRUCTURE
- 4 OPTIONAL EXTERIOR SHEATHING
- 5 OPTIONAL CAVITY INSULATION



STEEL COLUMN PLAN

## INTERSTORY CONNECTIONS

SKETCH NO.

AP11

SCALE  
3"=1'-0"

ISSUE DATE  
06/27/13

REV. NO.

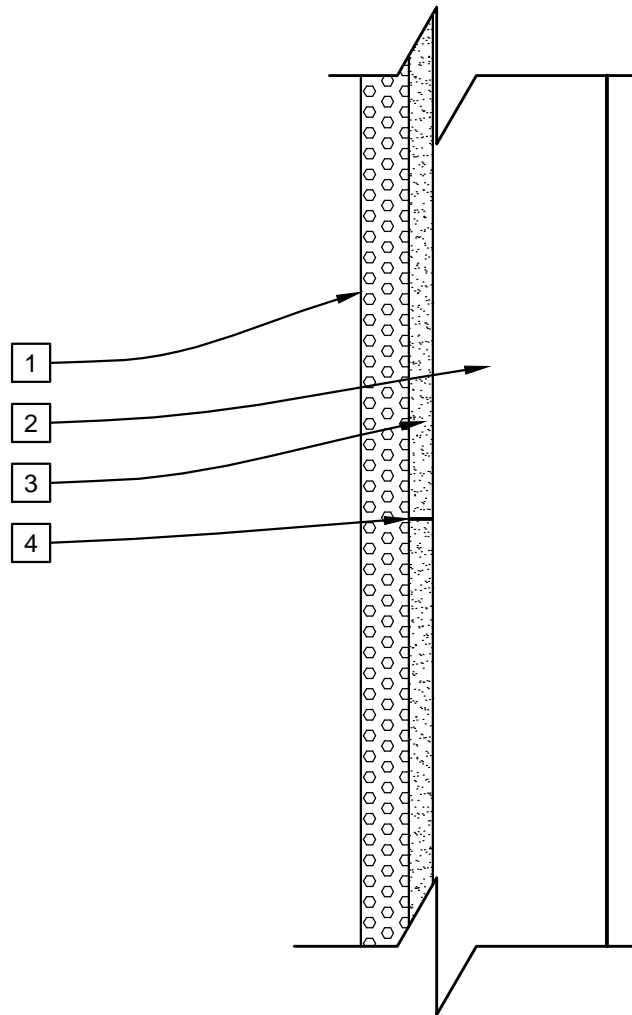
CAD FILE:  
INTERSTORY CONNECTIONS.dwg

Johns Manville ("JM") manufactures closed-cell polyisocyanurate foam sheathing insulation products and offer this general conceptual information to you as a courtesy. This complimentary assistance is not to be used or relied upon by anyone as a substitute for professional engineering design and documentation required by building code, contract, or applicable law. By accepting these comments you agree they do not constitute any representations, endorsements of, or an assumption by JM of any liability for either the adequacy of the design of this building or any other material not supplied by JM.



LEGEND

- 1 AP™ FOIL FACED SHEATHING
- 2 WALL STRUCTURE.
- 3 OPTIONAL EXTERIOR SHEATHING.
- 4 JOINT IN EXTERIOR GYPSUM.



**SUBSTRATE JOINTS & DEFECTS**

SKETCH NO.

**AP12**

SCALE  
3"=1'-0"

ISSUE DATE  
06/27/13

REV. NO.

CAD FILE:  
SUBSTRATE JOINTS & DEFECTS.dwg

Johns Manville ("JM") manufactures closed-cell polyisocyanurate foam sheathing insulation products and offer this general conceptual information to you as a courtesy. This complimentary assistance is not to be used or relied upon by anyone as a substitute for professional engineering design and documentation required by building code, contract, or applicable law. By accepting these comments you agree they do not constitute any representations, endorsements of, or an assumption by JM of any liability for either the adequacy of the design of this building or any other material not supplied by JM.

